



Release Notes for Cisco Aironet 802.11a/b/g Client Adapters (CB21AG and PI21AG) Install Wizard 1.2

Contents

This document contains the following sections:

- [Introduction, page 1](#)
- [System Requirements, page 2](#)
- [Important Notes, page 3](#)
- [New and Changed Information, page 5](#)
- [Installing or Upgrading Client Adapter Software, page 7](#)
- [Finding Version Numbers, page 18](#)
- [Caveats, page 19](#)
- [Troubleshooting, page 21](#)
- [Related Documentation, page 21](#)
- [Obtaining Documentation, page 22](#)
- [Obtaining Technical Assistance, page 23](#)
- [Obtaining Additional Publications and Information, page 24](#)

Introduction

This document describes system requirements, important notes, new and changed information, installation and upgrade procedures, and caveats for CB21AG and PI21AG client adapter Install Wizard release 1.2 and the following software included in the Install Wizard file:

- CB21AG and PI21AG client adapter driver release 1.2
- Aironet Desktop Utility (ADU) release 1.2



Corporate Headquarters:
Cisco Systems, Inc., 170 West Tasman Drive, San Jose, CA 95134-1706 USA

Copyright © 2004 Cisco Systems, Inc. All rights reserved.

System Requirements

You need the following in order to install Install Wizard 1.2 and use its software components:

- One of the following Cisco Aironet client adapters:
 - CB21AG PC-Cardbus card
 - PI21AG PCI card
- A computer running the Windows 2000 or XP operating system



Note Cisco recommends a 300-MHz (or greater) processor.

- Either Service Pack 1 or Service Pack 2 for Windows XP
- 20 MB of free hard disk space (minimum)
- 128 MB of RAM or greater (recommended)
- If your wireless network uses EAP-TLS or PEAP authentication, Certificate Authority (CA) and user certificates for EAP-TLS authentication or CA certificate for PEAP authentication
- If your wireless network uses PEAP (EAP-GTC) authentication with a One-Time Password (OTP) user database:
 - A hardware token device from OTP vendors or the Secure Computing SofToken program (release 2.1 or later)
 - Your hardware or software token password
- The following information from your system administrator:
 - The logical name for your workstation (also referred to as *client name*)
 - The protocols necessary to bind to the client adapter, such as TCP/IP
 - The case-sensitive service set identifier (SSID) for your RF network
 - If your network setup does not include a DHCP server, the IP address, subnet mask, and default gateway address of your computer
 - The wired equivalent privacy (WEP) keys of the access points with which your client adapter will communicate, if your wireless network uses static WEP for security
 - The username and password for your network account
- All necessary infrastructure devices (such as access points, servers, gateways, user databases, etc.) must be properly configured for any authentication type you plan to enable on the client.

Important Notes

Customized Installation Images (Notice to IT Professionals)

**Caution**

Use caution when bundling the client adapter software into a customized installation image. If the registry settings are modified, the software may not install and uninstall properly.

Client Adapter Software Compatibility

**Caution**

Cisco Aironet CB21AG and PI21AG client adapter software is incompatible with other Cisco Aironet client adapter software. The Aironet Desktop Utility (ADU) must be used with CB21AG and PI21AG cards, and the Aironet Client Utility (ACU) must be used with all other Cisco Aironet client adapters.

Workaround for Entering EAP-TLS Domain Name (CSCee23962)

To enable your client adapter to EAP-TLS authenticate in a multiple domain environment, create a profile in ADU that uses EAP-TLS authentication but **do not enter a domain name in the Server/Domain Name field on the Define Certificate window**. If the Login Name field is not filled in automatically, enter your username in this format: *username@domain* (for example, *jsmith@acs-test.cisco.com*).

**Note**

This workaround applies to both Windows 2000 and XP.

Workaround for Entering PEAP Domain Name

To enable your client adapter to PEAP authenticate in a multiple domain environment, create a profile in ADU that uses PEAP authentication but **do not enter a domain name in the Specific Server or Domain field on the Advanced Configuration window**. If the Login Name field is not filled in automatically, enter your username with nothing after it (for example, *jsmith*).

**Note**

This workaround applies to both Windows 2000 and XP.

Reboot Required When Uninstalling ACU and ADU

**Caution**

When you uninstall ACU and ADU, make sure you reboot your computer when prompted. Otherwise, the system may be rendered unable to boot, displaying the message “The Logon User Interface DLL cswGina.dll failed to load. Contact your system administrator to replace the DLL or restore the original DLL.”

GINA Error upon Reboot

If your computer ever experiences a GINA error on bootup, boot to the safe mode command prompt. Then copy the msgina.dll file in the WinNT\System32 directory (Windows 2000) or Windows\System32 directory (Windows XP) over to a file named cscogina.dll. The **copy** command enables you to copy a source file (msgina.dll) to a destination file (cscogina.dll) within the same directory.

Other Vendor Software Attempts to Run

If you insert the client adapter into your computer prior to using the Install Wizard to install the client adapter software, other vendor software may attempt to run. To prevent this from occurring, follow one of these steps. For a CB21AG card, run the Install Wizard and insert the card when prompted. For a PI21AG card, run the Install Wizard until it completes; then turn off your computer and insert the card.

Uninstalling Software Components

All profiles are deleted if you use the **Uninstall the previous installation** option on the Previous Installation Detected Install Wizard window to uninstall the client adapter software. Cisco recommends that you use the Profile Manager’s export feature to save your profiles before uninstalling the software.

Profiles for PC-Cardbus Cards

The profiles for PC-Cardbus cards are tied to the slot in which the card is inserted. Therefore, you must always insert your PC-Cardbus card into the same slot, create profiles for both slots, or export the profiles for one slot and import them for the other slot.

Auto Profile Selection Enables Scan of All Wireless Modes

When you enable auto profile selection, the client adapter scans all wireless modes (5 GHz, 54 Mbps; 2.4 GHz, 11 Mbps; and 2.4 GHz, 54 Mbps) for an available network. The client ignores the selected profile’s wireless mode setting, which was configured on the ADU Profile Management (Advanced) window. Using this method, the client does not need to drop the current connection nor change the current profile while looking for networks in other profiles.

ASTU Exit Option

The Exit option on the Aironet System Tray Utility (ASTU) pop-up menu closes both ASTU and ADU.

Windows Wireless Network Connection Icon Shows Unavailable Connection (Windows XP Only)

If your computer is running Windows XP and you configured your client adapter using ADU, the Windows Wireless Network Connection icon in the Windows system tray may be marked with a red X and show an unavailable connection even though a wireless connection exists. This condition is caused by a conflict between ADU and Windows XP's wireless network settings. Simply ignore the Windows icon and use the ASTU icon to check the status of your client adapter's wireless connection.

Supporting Documentation

The *Cisco Aironet 802.11a/b/g Wireless LAN Client Adapters (CB21AG and PI21AG) Installation and Configuration Guide* (part number OL-4211-02) pertains specifically to CB21AG and PI21AG client adapters. If you are using a Cisco Aironet 340, 350, or CB20A client adapter, refer to the Installation and Configuration Guide for that client adapter and your computer's operating system.

New and Changed Information

Support for Domain Logon with Certificate EAP

The client adapter now supports domain logon with PEAP (EAP-GTC) and PEAP (EAP-MSCHAP V2). This feature enables you to log into a domain using information from the machine store and perform the following functions: get user and Novell-based login scripts, map network drives, and implement user-based domain security policies.

To support this feature, a new check box has been added to the Define PEAP (EAP-GTC) Configuration and Define PEAP (EAP-MSCHAP V2) Configuration windows. The check box, which is entitled Use Machine Information for Domain Logon, is enabled by default.

- If the check box is checked, machine information is used at domain logon (before the user logs on).
- If the check box is not checked, machine information is not used. Authentication does not occur until the user is logged in.

**Note**

Domain logon is not currently supported for EAP-TLS.

Static Password Fields Added to PEAP (EAP-GTC) Configuration Window

Password and Confirm Password fields have been added to the Define PEAP (EAP-GTC) Configuration window for use with static passwords. With the addition of these new fields, you can now enter the static password for PEAP (EAP-GTC) during configuration rather than during authentication.

Roaming Parameters Added to Windows Control Panel

Two parameters designed to regulate the client adapter's roaming capabilities have been added to the Cisco Aironet 802.11a/b/g Wireless Adapter Properties window in the Windows Control Panel:

- **BSS Aging Interval**—The amount of time (in seconds) that the client keeps an access point in its roaming scanlist after it can no longer communicate to that device. The higher the value, the greater the number of access points to which the client may roam.

Range: 20 to 300 seconds (in 10-second increments)

Default: 120 seconds



Note Cisco recommends that you set the BSS Aging Interval to twice the value of the Scan Valid Interval. For example, if the Scan Valid Interval is 50, the BSS Aging Interval would be 100.

- **Scan Valid Interval**—The amount of time (in seconds) before the client starts scanning for a better access point after reaching the roaming threshold or missing beacons. (See [Table 1](#) for the threshold criteria.) The higher the value, the less time the client spends scanning for a better access point and the more time it has to send data.

Range: 20 to 120 seconds (in 5-second increments)

Default: 60 seconds



Note The client does not scan for a new access point as long as it has a good connection and is passing data.

Table 1 *Roaming Threshold Values*

Wireless Mode	Signal Strength Threshold (dBm)	Transmit Rate Threshold (Mbps)
5 GHz, 54 Mbps or 2.4 GHz, 54 Mbps	24	24
2.4 GHz, 11 Mbps (other modes enabled)	24	9
2.4 GHz, 11 Mbps (only mode enabled)	24	5

To access these parameters, follow these steps:

- Step 1** Double-click **My Computer, Control Panel, and System**.
- Step 2** Click the **Hardware** tab and **Device Manager**.
- Step 3** Double-click **Network Adapters**.
- Step 4** Right-click **Cisco Aironet 802.11a/b/g Wireless Adapter**.
- Step 5** Click **Properties** and the **Advanced** tab. These new parameters appear in the Property list.

Installing or Upgrading Client Adapter Software

This section describes how to initially install or upgrade to CB21AG and PI21AG Install Wizard 1.2 on a computer running Windows 2000 or XP. If the client adapter software is not installed on your computer, follow the instructions in the “[Installing the Client Adapter Software](#)” section below. If you are upgrading your client adapter software to release 1.2, follow the instructions in the “[Upgrading the Client Adapter Software](#)” section on page 15.

Installing the Client Adapter Software

Follow these steps to install CB21AG and PI21AG Install Wizard 1.2 on your computer.



Caution

Do not eject your client adapter at any time during the installation process, including during the reboot.



Note

The Install Wizard disables the Microsoft 802.1X supplicant, if installed, to prevent any potential conflicts between ADU and the supplicant.



Note

Only one wireless client adapter can be installed and used at a time. The software does not support the use of multiple cards.

- Step 1** Make sure the client adapter is not inserted in your computer. You will be instructed when to insert it.
- Step 2** Use your computer’s web browser to access the following URL:
<http://www.cisco.com/public/sw-center/sw-wireless.shtml>
- Step 3** Click **Option #2: Aironet Wireless Software Display Tables**.



Note

If you prefer to use an automated tool, you can download software from the Software Selector tool instead of the display tables. To do so, click **Option #1: Aironet Wireless Software Selector**, follow the instructions on the window, and go to [Step 7](#).

- Step 4** Click **Cisco Aironet Wireless LAN Client Adapters**.
- Step 5** Under Aironet Client Adapter Installation Wizard (For Windows), click **802.11a/b/g (CB21AG, PI21AG)**.
- Step 6** Click the **Win-Client-802.11a-b-g-Ins-Wizard-v12.exe** file.
- Step 7** Complete the encryption authorization form; then read and accept the terms and conditions of the Software License Agreement.
- Step 8** Click the file again to download it.
- Step 9** Save the file to your computer’s hard drive.
- Step 10** Use Windows Explorer to find the file.
- Step 11** Double-click the file. The “Starting InstallShield Wizard” message appears followed by the Preparing Setup window (see [Figure 1](#)) and the Cisco Aironet Installation Program window (see [Figure 2](#)).

Figure 1 *Preparing Setup Window*

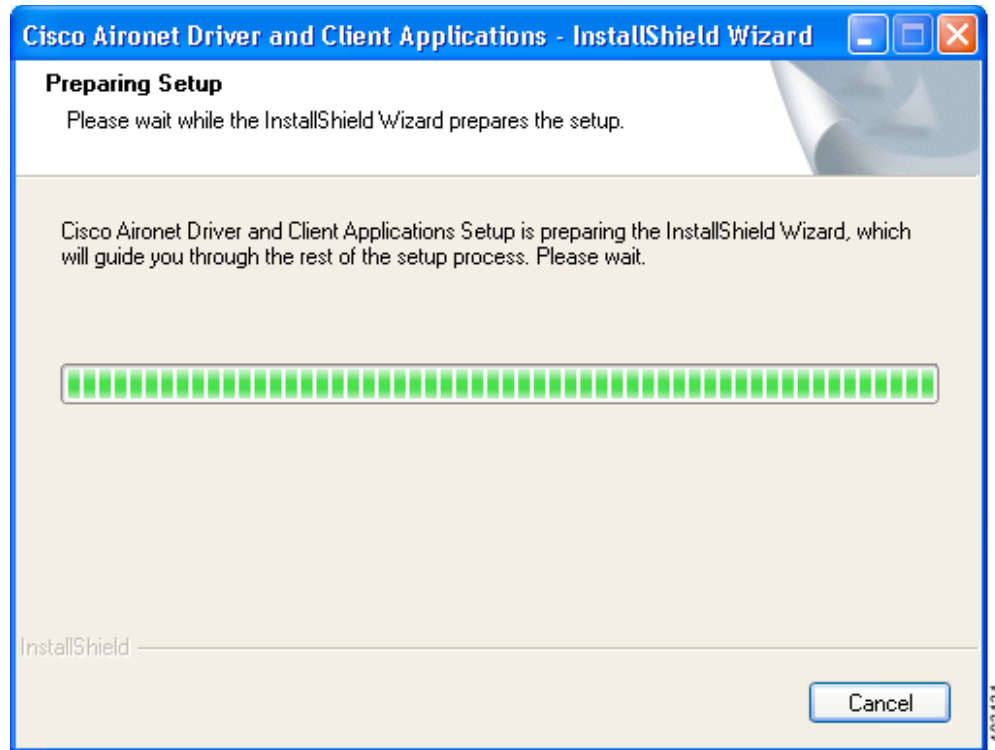
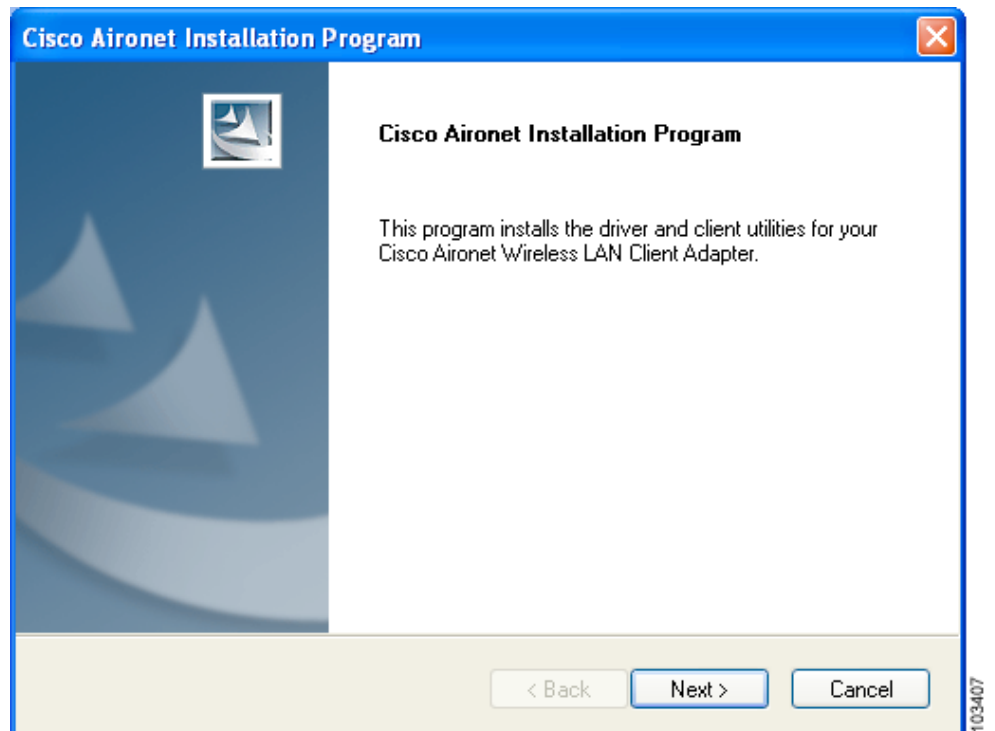
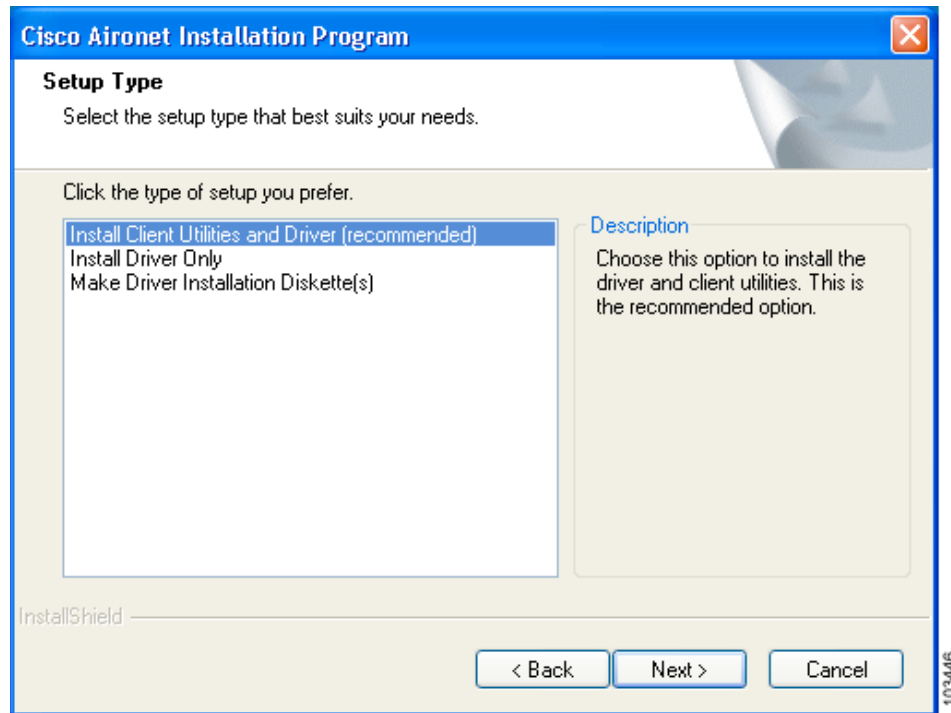


Figure 2 *Cisco Aironet Installation Program Window*



Step 12 Click **Next**. The Setup Type window appears (see [Figure 3](#)).

Figure 3 Setup Type Window



Step 13 Choose one of the following options:



Note To ensure compatibility among software components, Cisco recommends that you install the client utilities and driver.

- **Install Client Utilities and Driver (recommended)**—Installs the client adapter driver and client utilities.
- **Install Driver Only**—Installs only the client adapter driver. If you choose this option, click **Next** and go to [Step 25](#).
- **Make Driver Installation Diskette(s)**—Enables you to create driver installation diskettes that can be used to install drivers using the Windows Device Manager.

Step 14 Click **Next**.

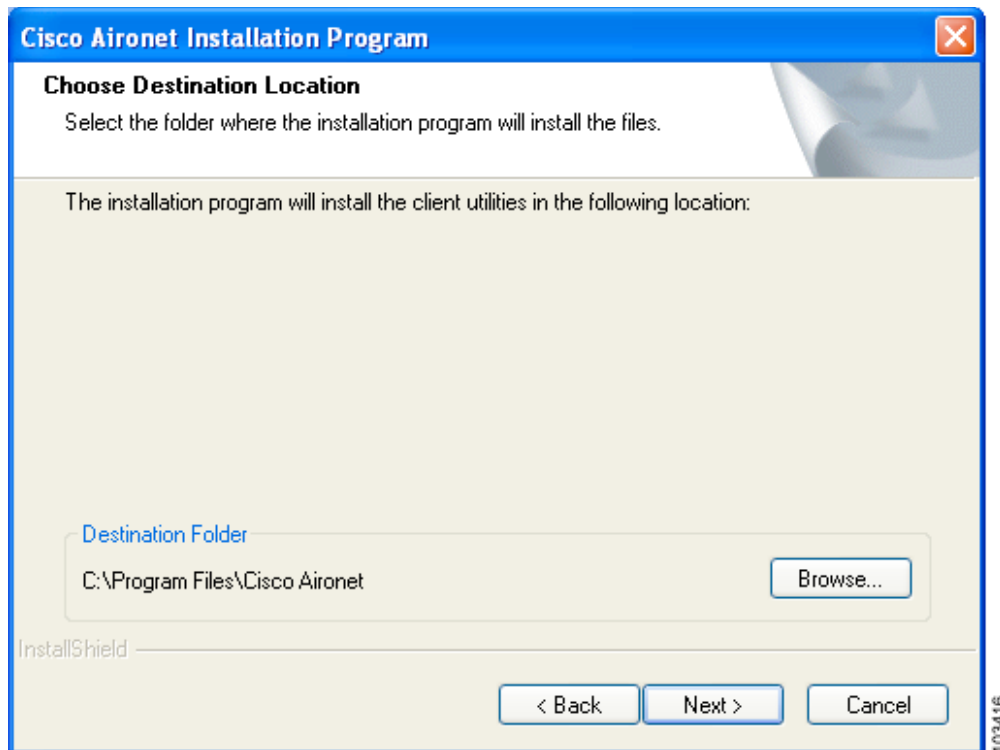
Step 15 If a message appears indicating that you are required to restart your computer at the end of the installation process, click **Yes**.



Note If you click **No**, you are asked to confirm your decision. If you proceed, the installation process terminates.

The Choose Destination Location window appears (see [Figure 4](#)).

Figure 4 Choose Destination Location Window



Step 16 Perform one of the following:

- If you chose the first option in [Step 13](#), click **Next** to install the client utility files in the C:\Program Files\Cisco Aironet directory.



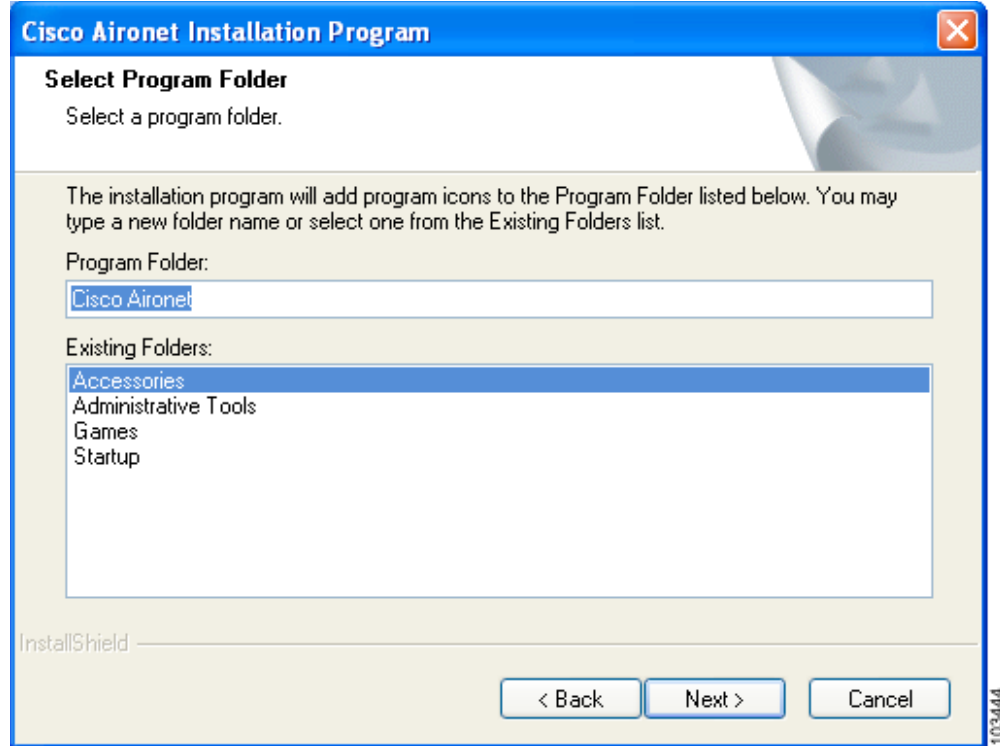
Note If you want to install the client utilities in a different directory, click **Browse**, choose a different directory, click **OK**, and click **Next**.

- If you chose the Make Driver Installation Diskette(s) option in [Step 13](#), insert a floppy disk into your computer and click **Next** to copy the driver to the diskette. Go to [Step 25](#).



Note If you want to copy the driver to a different drive or directory, click **Browse**, choose a new location, click **OK**, and click **Next**.

Step 17 The Select Program Folder window appears (see [Figure 5](#)).

Figure 5 Select Program Folder Window

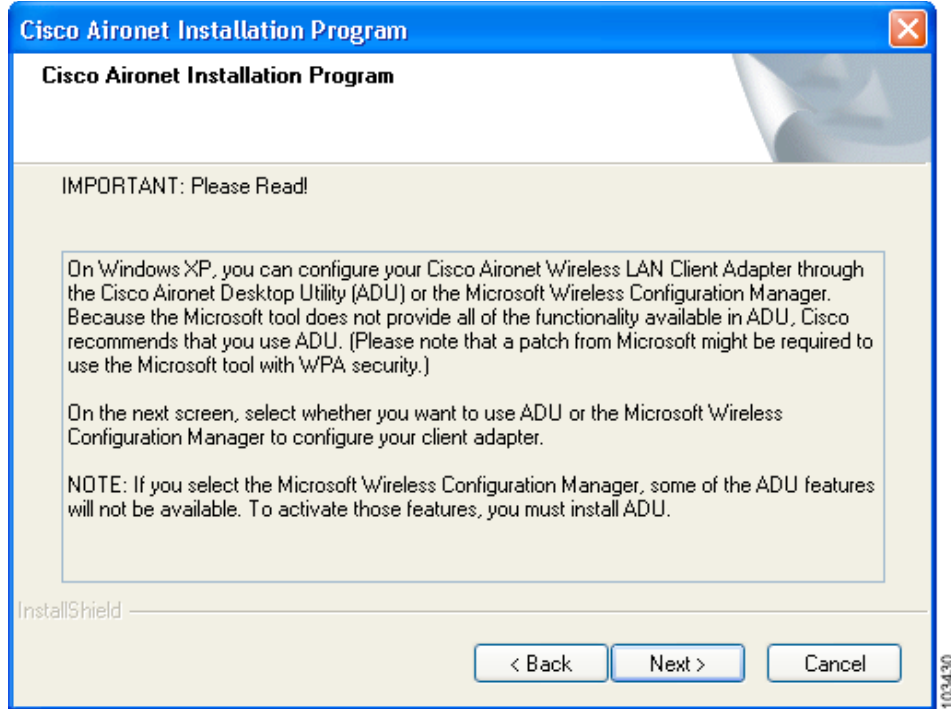
Step 18 Click **Next** to add program icons to the Cisco Aironet program folder.



Note If you want to specify a different program folder, choose a folder from the Existing Folders list or type a new folder name in the Program Folder field and click **Next**.

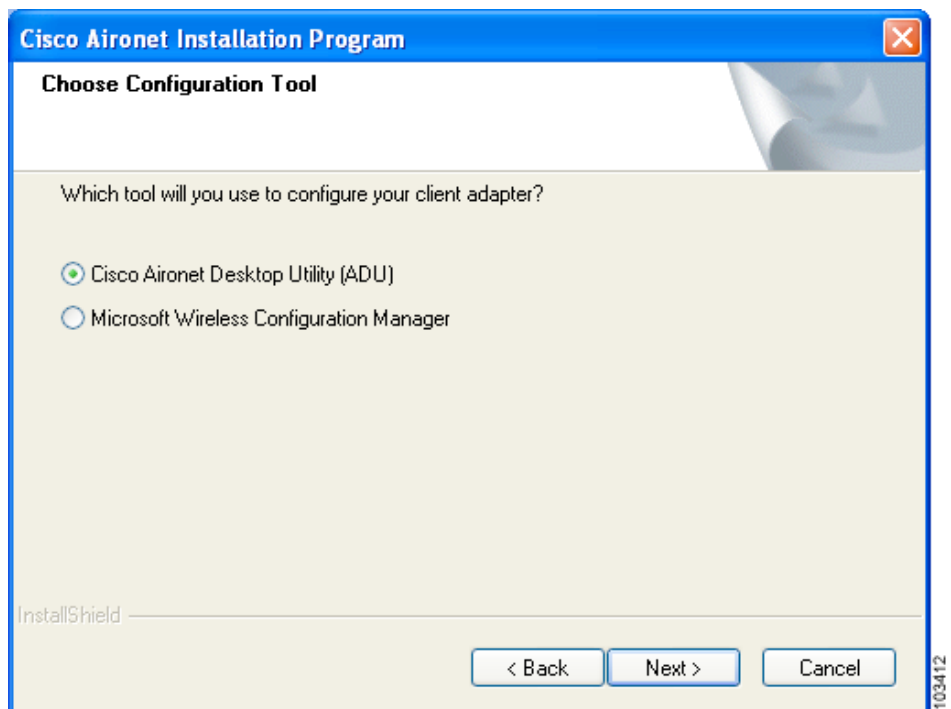
Step 19 If your computer is running Windows 2000, go to [Step 25](#). If your computer is running Windows XP, the **IMPORTANT: Please Read!** window appears (see [Figure 6](#)).

Figure 6 *IMPORTANT: Please Read! Window*



Step 20 Read the information displayed and click **Next**. The Choose Configuration Tool window appears (see [Figure 7](#)).

Figure 7 *Choose Configuration Tool Window*



- Step 21** Choose one of the following options based on the tool you want to use to configure your client adapter:
- **Cisco Aironet Desktop Utility (ADU)**—Enables you to configure your client adapter using ADU.
 - **Microsoft Wireless Configuration Manager**—Enables you to configure your client adapter using the Microsoft Wireless Configuration Manager in Windows XP.

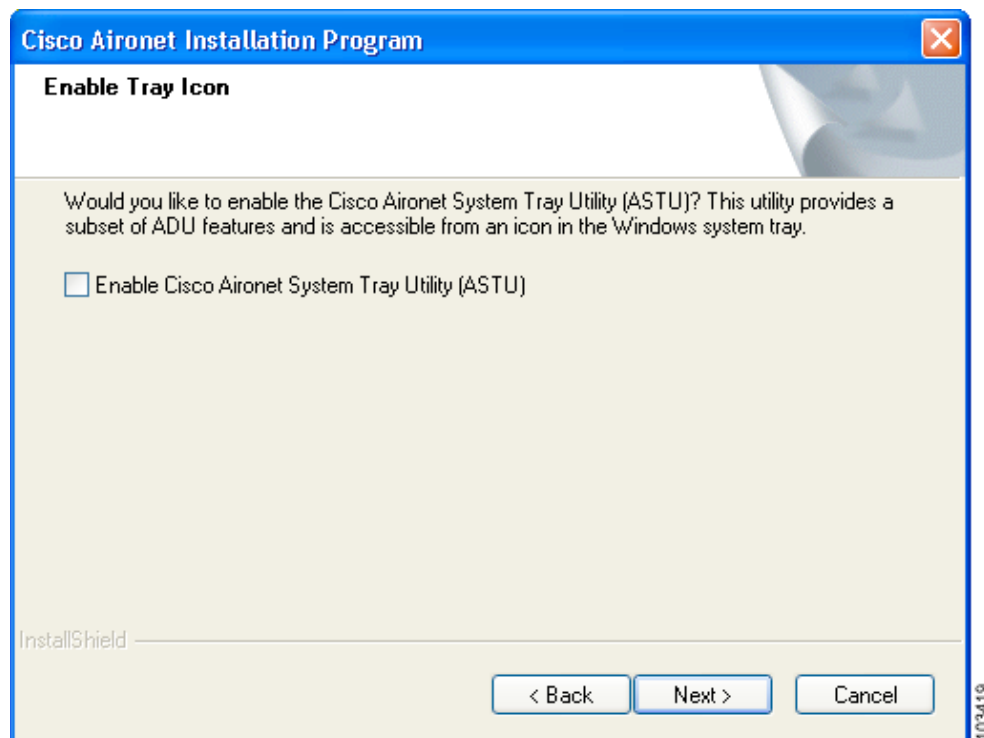


Note If you choose Cisco Aironet Desktop Utility (ADU) above, the Microsoft Wireless Configuration Manager is disabled. If you ever manually enable it, you are prompted to disable it whenever ADU is activated.

Step 22 Click **Next**.

Step 23 If you chose Cisco Aironet Desktop Utility (ADU) in [Step 21](#), go to [Step 25](#). If you chose Microsoft Wireless Configuration Manager, the Enable Tray Icon window appears (see [Figure 8](#)).

Figure 8 *Enable Tray Icon Window*



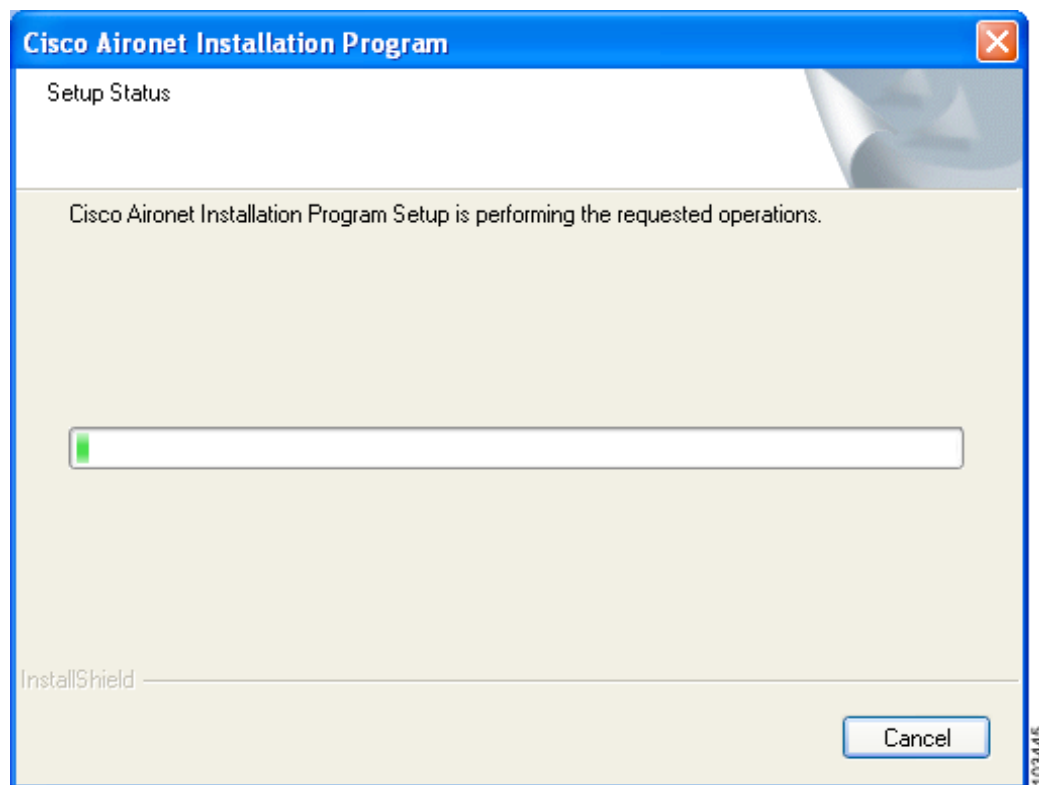
Step 24 Check the **Enable Cisco Aironet System Tray Utility (ASTU)** check box if you want to be able to use ASTU even though you have chosen to configure your client adapter through Windows XP instead of ADU. Click **Next**.

Step 25 When prompted to insert your client adapter, perform one of the following:

- If you are using a CB21AG card, insert the card into your computer's Cardbus slot and click **OK**. If the Windows Found New Hardware Wizard appears, click **Cancel**.
- If you are using a PI21AG card, click **OK**. You will insert the card into your computer's PCI slot after you have finished installing the Install Wizard.

The Setup Status window appears (see [Figure 9](#)).

Figure 9 Setup Status Window



The installation process begins, and you are notified as each software component is installed.

- Step 26** When a message appears indicating that your computer needs to be rebooted, click **OK** and allow your computer to restart.
- Step 27** If you are using a PI21AG card, follow the instructions in [Chapter 3](#) of the *Cisco Aironet 802.11a/b/g Wireless LAN Client Adapters (CB21AG and PI21AG) Installation and Configuration Guide* to insert the PCI card.
- Step 28** If the Windows Found New Hardware Wizard appears after your computer reboots, click **Next**, allow the wizard to install the software for the client adapter, and click **Finish**.
- Step 29** If your network setup does not include a DHCP server and you plan to use TCP/IP, follow these steps for your operating system.
- **Windows 2000**
 - a. Double-click **My Computer**, **Control Panel**, and **Network and Dial-up Connections**.
 - b. Right-click **Local Area Connection x** (where *x* represents the number of the connection).
 - c. Click **Properties**.
 - d. In the Components Checked Are Used by This Connection field, click **Internet Protocol (TCP/IP)** and **Properties**.

- e. Choose **Use the following IP address** and enter the IP address, subnet mask, and default gateway address of your computer (which can be obtained from your system administrator).
 - f. Click **OK** to close each open window.
- **Windows XP**
 - a. Double-click **My Computer**, **Control Panel**, and **Network Connections**.
 - b. Right-click **Wireless Network Connection x** (where *x* represents the number of the connection).
 - c. Click **Properties**.
 - d. In the This Connection Uses the Following Items field, click **Internet Protocol (TCP/IP)** and **Properties**.
 - e. Choose **Use the following IP address** and enter the IP address, subnet mask, and default gateway address of your computer (which can be obtained from your system administrator).
 - f. Click **OK** to close each open window.
- Step 30** If you are prompted to restart your computer, click **Yes**. The installation is complete.

Upgrading the Client Adapter Software

Follow these steps to upgrade your CB21AG or PI21AG client adapter software to release 1.2 using the settings that were selected during the last installation.



Note

If you want to upgrade your client adapter software using new installation settings, you must uninstall the previous installation (see the instructions in [Chapter 9](#) of the *Cisco Aironet 802.11a/b/g Wireless LAN Client Adapters (CB21AG and PI21AG) Installation and Configuration Guide*) and then follow the instructions in the “[Installing the Client Adapter Software](#)” section on [page 7](#) to install the new software.

- Step 1** Make sure the client adapter is inserted in your computer.



Note

If your client adapter is not inserted, the software cannot be upgraded.

- Step 2** Use your computer’s web browser to access the following URL:

<http://www.cisco.com/public/sw-center/sw-wireless.shtml>

- Step 3** Click **Option #2: Aironet Wireless Software Display Tables**.



Note

If you prefer to use an automated tool, you can download software from the Software Selector tool instead of the display tables. To do so, click **Option #1: Aironet Wireless Software Selector**, follow the instructions on the window, and go to [Step 7](#).

- Step 4** Click **Cisco Aironet Wireless LAN Client Adapters**.

- Step 5** Under Aironet Client Adapter Installation Wizard (For Windows), click **802.11a/b/g (CB21AG, PI21AG)**.

- Step 6** Click the **Win-Client-802.11a-b-g-Ins-Wizard-v12.exe** file.

- Step 7** Complete the encryption authorization form; then read and accept the terms and conditions of the Software License Agreement.
- Step 8** Click the file again to download it.
- Step 9** Save the file to your computer's hard drive.
- Step 10** Use Windows Explorer to find the file.
- Step 11** Double-click the file. The "Starting InstallShield Wizard" message appears followed by the Preparing Setup window (see [Figure 10](#)) and the Previous Installation Detected window (see [Figure 11](#)).

Figure 10 *Preparing Setup Window*

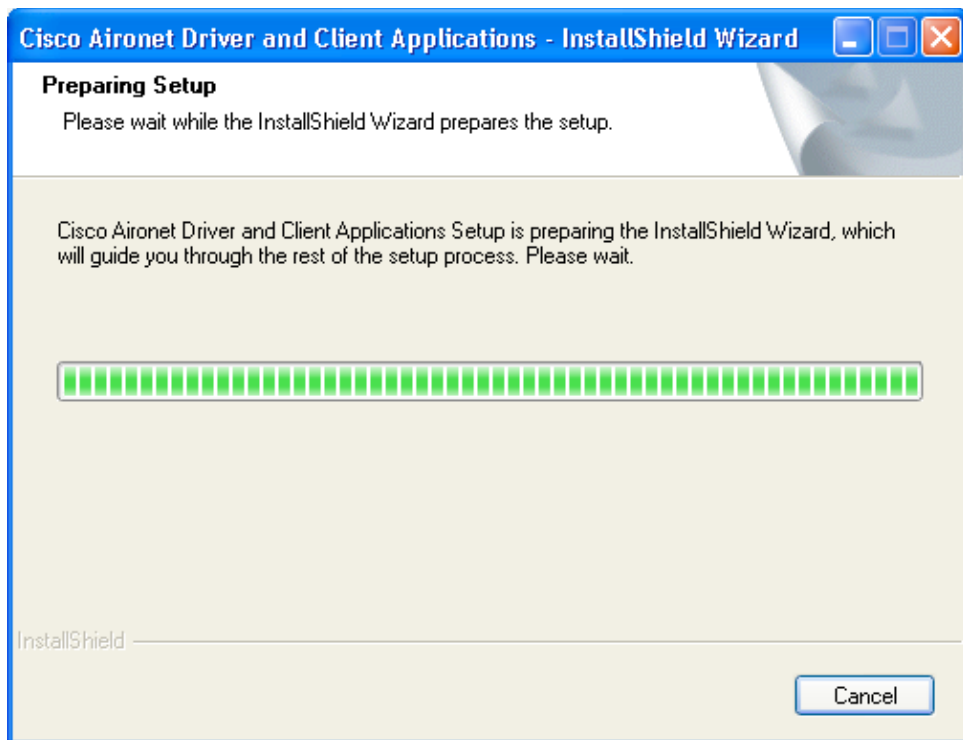
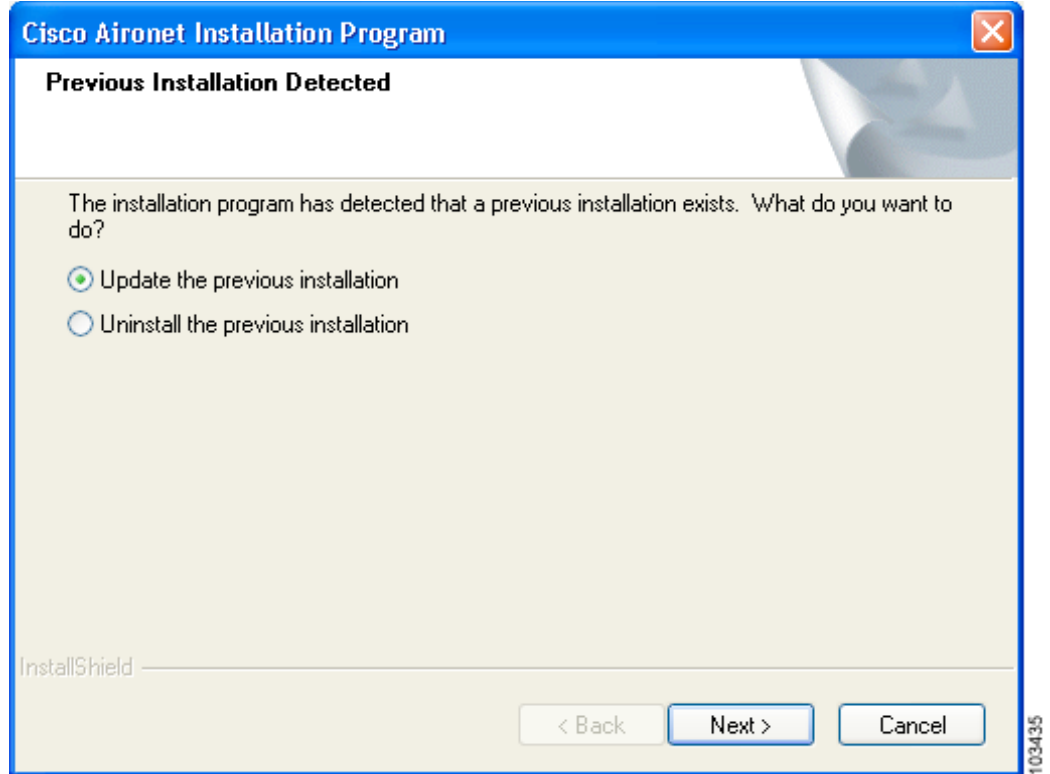


Figure 11 Previous Installation Detected Window



Step 12 Choose **Update the previous installation** and click **Next**.

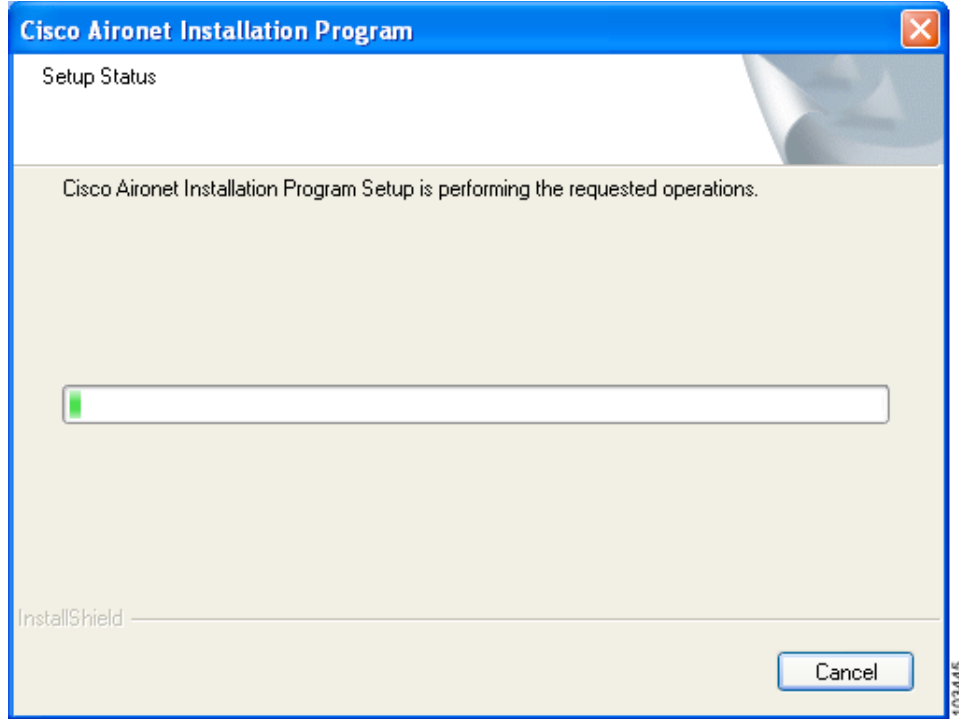
Step 13 When a message appears indicating that you are required to restart your computer at the end of the installation process, click **Yes**.



Note If you click **No**, you are asked to confirm your decision. If you proceed, the installation process terminates.

The Setup Status window appears (see [Figure 12](#)).

Figure 12 Setup Status Window



The upgrade process begins, and you are notified as each software component is installed.

- Step 14** When a message appears indicating that your computer needs to be rebooted, click **OK** and allow your computer to restart. The client adapter’s software has been upgraded.

Finding Version Numbers

Follow the instructions in this section to find the version numbers of your client adapter’s software components.

Finding the Driver Version

To find the driver version that is currently installed for your client adapter, open ADU, click the **Diagnostics** tab, and click **Adapter Information**. The Driver Version field on the Adapter Information window shows the current driver version.

Finding the ADU Version

To find the version of ADU that is currently installed for your client adapter, open ADU and choose the **About Aironet Desktop Utility** option from the Help drop-down menu. The About window shows the current ADU version.

Caveats

This section describes open and resolved caveats for the software components in this release.

Open Caveats

Open Driver Caveats

The following caveats are not resolved in CB21AG and PI21AG client adapter driver 1.2.

- CSCef54644—Problem getting IP address on 802.11a radio after rebooting switch
When the client adapter is set to operate in 5-GHz, 54-Mbps wireless mode, the client may fail to get an IP address via DHCP after the upper switch reboots. To work around this problem, shut down both the client adapter and the access point to which it is associated and reauthenticate.
- CSCef40331—Client fails to reconnect to access point after recovering from standby mode
On Windows XP systems, if the client adapter is ejected during standby or hibernate mode and is not reinserted before the system resumes, the client fails to reauthenticate to the access point upon the system resume. This problem occurs only for client adapters using EAP authentication.
- CSCin74956 and CSCee69323—Client fails to get IP address when CCKM CKIP+CMIC is used with 12.2(15)JA
Clients fail to obtain an IP address when attempting to associate to an access point that is running Cisco IOS Release 12.2(15)JA and is configured for CCKM with CKIP+CMIC. To work around this problem, configure the access point for CCKM with TKIP+Michael MIC rather than CKIP+CMIC or upgrade your access points to Cisco IOS Release 12.2(15)XR or greater.
- CSCee23962—EAP-TLS fails when using domain name
EAP-TLS authentication fails if you enter a domain name in the Server/Domain Name field on the Define Certificate window. To work around this problem, create a profile in ADU that uses EAP-TLS authentication but do not enter a domain name in the Server/Domain Name field on the Define Certificate window. If the Login Name field is not filled in automatically, enter your username in this format: *username@domain* (for example, *jsmith@acs-test.cisco.com*). This workaround applies to both Windows 2000 and XP.
- CSCed40520—Up to 5-minute delay for initial boot
Some computers may experience up to a 5-minute delay during the first boot after installation. Subsequent boots are normal.
- CSCec08294—Client remains in access point's association table
The client remains in the access point's association table for approximately 30 minutes after it has been disabled.
- CSCed23644—DHCP does not operate if MIC is enabled on VxWorks access points
DHCP does not operate with CB21AG and PI21AG client adapters if MIC is enabled on VxWorks access points. To work around this problem, upgrade the VxWorks access points to firmware version 12.04 or later.

Open ADU Caveats

The following caveats are not resolved in ADU 1.2.

- CSCed72076—Channels 13 and 14 not available in ad hoc mode for Japanese cards
The Japan regulatory domain supports channels 1 through 14 for IEEE 802.11b communications and channels 1 through 13 for IEEE 802.11g communications. However, channels 13 and 14 do not appear in the Channels drop-down list on the ADU Profile Management (Advanced) window for client adapters that are configured for use in Japan.
- CSCin58718—ADU shows invalid IP address for VxWorks access points
The ADU Advanced Status window shows an Associated AP IP Address of 0.0.0.0 when the client adapter is associated to a VxWorks access point. To work around this problem, upgrade the VxWorks access point to firmware version 12.04 or later.
- CSCee14610—PEAP authentication attempts fail for users with zero-length passwords
PEAP authentication attempts fail for users with zero-length passwords. To work around this problem, set up a Windows password that contains at least one character.
- CSCec39604—EAP-TLS authentication attempts fail for users with zero-length passwords
EAP-TLS authentication attempts fail for users with zero-length passwords. To work around this problem, set up a Windows password that contains at least one character.

Resolved Caveats

Resolved Driver Caveats

The following caveats are resolved in CB21AG and PI21AG client adapter driver 1.2.

- CSCee77572—Winlogon memory error occurs
A Winlogon memory error may occur when a screen saver utility with password protection is used on a Dell C800 device.
- CSCee85197—Cannot create driver diskettes when adapter not inserted
If you try to use the Install Wizard to create driver installation diskettes when a client adapter is not inserted in your computer, the following message appears and the operation terminates: “Cisco Aironet 802.11a/b/g wireless adapter software update can't proceed. Please insert the adapter in the system and try again.”
- CSCee68112—Client adapter does not roam appropriately
The client adapter experiences a delay when attempting to roam to another access point. The client adapter's roaming behavior has been improved to address this caveat.
- CSCef00136—Intermittent loss of IP address during roaming under good RF coverage
CB21AG cards experience intermittent loss of IP address during roaming, even in areas with good RF coverage. IP address loss should no longer occur during roaming under good RF coverage.
- CSCee87952—ASTU Preferences menu options disappear after unchecking
If you choose Preferences from the ASTU pop-up menu and then uncheck some of the menu options, these options are no longer available after your computer reboots.

- CSCee70072—Auto profile selection causes no connectivity until logon
When auto profile selection is enabled, connectivity does not occur until the user logs in. To work around this problem, disable auto profile selection if you want your client adapter to establish connectivity prior to logon.
- CSCef36181—Finding domain controller takes longer than 3 minutes
During LEAP authentication, the client takes more than 3 minutes to find the domain controller.
- CSCin75649—Failure to find domain controller during LEAP authentication
The LEAP Authentication Status screen may show an incorrect status for the Finding Domain Controller field, and the client adapter may or may not successfully LEAP authenticate regardless of the status shown for this field.
- CSCed21099—PEAP does not operate with domain logon
PEAP authentication does not operate with domain logon. See the “[Support for Domain Logon with Certificate EAP](#)” section on page 5 for details on the resolution of this caveat.
- CSCee84789—Clients using 2.4-GHz, 54-Mbps wireless mode may function incorrectly at low signal strength levels
Clients that are configured to use the 2.4-GHz, 54-Mbps wireless mode may experience the following problems when signal strength levels drop below -70 dBm: loss of network connectivity, erratic throughput, packet loss, etc.

Getting Bug Information on Cisco.com

If you are a Cisco registered user, you can use the Cisco TAC Software Bug Toolkit, which consists of three tools (Bug Navigator, Bug Watcher, and Search by Bug ID Number) that help you to identify existing bugs (or caveats) in Cisco software products.

Access the TAC Software Bug Toolkit at the following URL:

http://www.cisco.com/cgi-bin/Support/Bugtool/launch_bugtool.pl

Troubleshooting

For the most up-to-date, detailed troubleshooting information, refer to the Cisco TAC website at

<http://www.cisco.com/en/US/support/index.html>

Click **Product Support** > **Wireless**. Then choose your product and **Troubleshooting** to find information on the problem you are experiencing.

Related Documentation

For more information about Cisco Aironet CB21AG and PI21AG client adapters, refer to the following document:

- *Cisco Aironet 802.11a/b/g Wireless LAN Client Adapters (CB21AG and PI21AG) Installation and Configuration Guide*, OL-4211-02

<http://www.cisco.com/univercd/cc/td/doc/product/wireless/cb21ag/index.htm>

Obtaining Documentation

Cisco documentation and additional literature are available on Cisco.com. Cisco also provides several ways to obtain technical assistance and other technical resources. These sections explain how to obtain technical information from Cisco Systems.

Cisco.com

You can access the most current Cisco documentation at this URL:

<http://www.cisco.com/univercd/home/home.htm>

You can access the Cisco website at this URL:

<http://www.cisco.com>

You can access international Cisco websites at this URL:

http://www.cisco.com/public/countries_languages.shtml

Ordering Documentation

You can find instructions for ordering documentation at this URL:

http://www.cisco.com/univercd/cc/td/doc/es_inpk/pdi.htm

You can order Cisco documentation in these ways:

- Registered Cisco.com users (Cisco direct customers) can order Cisco product documentation from the Ordering tool:
<http://www.cisco.com/en/US/partner/ordering/index.shtml>
- Nonregistered Cisco.com users can order documentation through a local account representative by calling Cisco Systems Corporate Headquarters (California, USA) at 408 526-7208 or, elsewhere in North America, by calling 800 553-NETS (6387).

Documentation Feedback

You can send comments about technical documentation to bug-doc@cisco.com.

You can submit comments by using the response card (if present) behind the front cover of your document or by writing to the following address:

Cisco Systems
Attn: Customer Document Ordering
170 West Tasman Drive
San Jose, CA 95134-9883

We appreciate your comments.

Obtaining Technical Assistance

For all customers, partners, resellers, and distributors who hold valid Cisco service contracts, Cisco Technical Support provides 24-hour-a-day, award-winning technical assistance. The Cisco Technical Support Website on Cisco.com features extensive online support resources. In addition, Cisco Technical Assistance Center (TAC) engineers provide telephone support. If you do not hold a valid Cisco service contract, contact your reseller.

Cisco Technical Support Website

The Cisco Technical Support Website provides online documents and tools for troubleshooting and resolving technical issues with Cisco products and technologies. The website is available 24 hours a day, 365 days a year at this URL:

<http://www.cisco.com/techsupport>

Access to all tools on the Cisco Technical Support Website requires a Cisco.com user ID and password. If you have a valid service contract but do not have a user ID or password, you can register at this URL:

<http://tools.cisco.com/RPF/register/register.do>

Submitting a Service Request

Using the online TAC Service Request Tool is the fastest way to open S3 and S4 service requests. (S3 and S4 service requests are those in which your network is minimally impaired or for which you require product information.) After you describe your situation, the TAC Service Request Tool automatically provides recommended solutions. If your issue is not resolved using the recommended resources, your service request will be assigned to a Cisco TAC engineer. The TAC Service Request Tool is located at this URL:

<http://www.cisco.com/techsupport/servicerequest>

For S1 or S2 service requests or if you do not have Internet access, contact the Cisco TAC by telephone. (S1 or S2 service requests are those in which your production network is down or severely degraded.) Cisco TAC engineers are assigned immediately to S1 and S2 service requests to help keep your business operations running smoothly.

To open a service request by telephone, use one of the following numbers:

Asia-Pacific: +61 2 8446 7411 (Australia: 1 800 805 227)

EMEA: +32 2 704 55 55

USA: 1 800 553 2447

For a complete list of Cisco TAC contacts, go to this URL:

<http://www.cisco.com/techsupport/contacts>

Definitions of Service Request Severity

To ensure that all service requests are reported in a standard format, Cisco has established severity definitions.

Severity 1 (S1)—Your network is “down,” or there is a critical impact to your business operations. You and Cisco will commit all necessary resources around the clock to resolve the situation.

Severity 2 (S2)—Operation of an existing network is severely degraded, or significant aspects of your business operation are negatively affected by inadequate performance of Cisco products. You and Cisco will commit full-time resources during normal business hours to resolve the situation.

Severity 3 (S3)—Operational performance of your network is impaired, but most business operations remain functional. You and Cisco will commit resources during normal business hours to restore service to satisfactory levels.

Severity 4 (S4)—You require information or assistance with Cisco product capabilities, installation, or configuration. There is little or no effect on your business operations.

Obtaining Additional Publications and Information

Information about Cisco products, technologies, and network solutions is available from various online and printed sources.

- Cisco Marketplace provides a variety of Cisco books, reference guides, and logo merchandise. Visit Cisco Marketplace, the company store, at this URL:
<http://www.cisco.com/go/marketplace/>
- The Cisco *Product Catalog* describes the networking products offered by Cisco Systems, as well as ordering and customer support services. Access the Cisco Product Catalog at this URL:
<http://cisco.com/univercd/cc/td/doc/pcat/>
- *Cisco Press* publishes a wide range of general networking, training and certification titles. Both new and experienced users will benefit from these publications. For current Cisco Press titles and other information, go to Cisco Press at this URL:
<http://www.ciscopress.com>
- *Packet* magazine is the Cisco Systems technical user magazine for maximizing Internet and networking investments. Each quarter, Packet delivers coverage of the latest industry trends, technology breakthroughs, and Cisco products and solutions, as well as network deployment and troubleshooting tips, configuration examples, customer case studies, certification and training information, and links to scores of in-depth online resources. You can access Packet magazine at this URL:
<http://www.cisco.com/packet>
- *iQ Magazine* is the quarterly publication from Cisco Systems designed to help growing companies learn how they can use technology to increase revenue, streamline their business, and expand services. The publication identifies the challenges facing these companies and the technologies to help solve them, using real-world case studies and business strategies to help readers make sound technology investment decisions. You can access iQ Magazine at this URL:
<http://www.cisco.com/go/iqmagazine>

- *Internet Protocol Journal* is a quarterly journal published by Cisco Systems for engineering professionals involved in designing, developing, and operating public and private internets and intranets. You can access the Internet Protocol Journal at this URL:

<http://www.cisco.com/ipj>

- World-class networking training is available from Cisco. You can view current offerings at this URL:

<http://www.cisco.com/en/US/learning/index.html>

This document is to be used in conjunction with the documents listed in the “[Related Documentation](#)” section.

CCSP, the Cisco Square Bridge logo, Cisco Unity, Follow Me Browsing, FormShare, and StackWise are trademarks of Cisco Systems, Inc.; Changing the Way We Work, Live, Play, and Learn, and iQuick Study are service marks of Cisco Systems, Inc.; and Aironet, ASIST, BPX, Catalyst, CCDA, CCDP, CCIE, CCIP, CCNA, CCNP, Cisco, the Cisco Certified Internetwork Expert logo, Cisco IOS, Cisco Press, Cisco Systems, Cisco Systems Capital, the Cisco Systems logo, Empowering the Internet Generation, Enterprise/Solver, EtherChannel, EtherFast, EtherSwitch, Fast Step, GigaDrive, GigaStack, HomeLink, Internet Quotient, IOS, IP/TV, iQ Expertise, the iQ logo, iQ Net Readiness Scorecard, LightStream, Linksys, MeetingPlace, MGX, the Networkers logo, Networking Academy, Network Registrar, *Packet*, PIX, Post-Routing, Pre-Routing, ProConnect, RateMUX, Registrar, ScriptShare, SlideCast, SMARTnet, StrataView Plus, SwitchProbe, TeleRouter, The Fastest Way to Increase Your Internet Quotient, TransPath, and VCO are registered trademarks of Cisco Systems, Inc. and/or its affiliates in the United States and certain other countries.

All other trademarks mentioned in this document or Website are the property of their respective owners. The use of the word partner does not imply a partnership relationship between Cisco and any other company. (0406R)

Copyright © 2004 Cisco Systems, Inc.
All rights reserved.