



Release Notes 6.1 for Cisco Vision Dynamic Signage Director

Cisco Vision Dynamic Signage Director, Release 6.1.0-608 SP3 UPDATE

Revised: 2020-05-29

First Published: 2018-07-10

Table 1 Document Revision History

Date	Revision History
Revised: 2020-05-29	<ul style="list-style-type: none">■ Document update to correct setting <code>dmp.portrait.clockwise</code> to “true” to get +270 degree rotation (or -90 degrees). See Flexible DMP Content Rotation, page 9.■ Document update to include clarifications about new content validation caution icon. See Content Validation, page 12.
Revised: 2019-09-27	Document update to include information about firmware. See Known Issues with Firmware, page 3 .
Revised: 2019-05-29	Release 6.1.0-608 (SP3) is available. This release includes security updates, other fixes, and resolves defects.
Revised: 2019-03-29	This is an update to the Release Notes for 6.1.0-505 (SP2). This release updates the DMP firmware to 7.0.92.2. The firmware addresses the AES CBC encrypted stream DMP tune-in delay issue. If you are using AES CBC encryption of your video feeds, we highly recommend using firmware 7.0.92.2 to reduce video decryption time. Using the newest firmware is optional. The following sections were updated: <ul style="list-style-type: none">■ Firmware Configuration for all Media Players, page 32■ Resolved Defects in Release 6.1.0-505, page 34
Revised: 2018-11-29	Release 6.1.0-505 (SP2) is available and this document has been revised. The following sections were updated: <ul style="list-style-type: none">■ Key Considerations for This Release, page 3■ Upgrade Paths, page 31■ Resolved Defects in Release 6.1.0-505, page 34■ Open Defects in Release 6.1.0-505, page 35
Revised: 2018-11-13	Enhanced instructions for installing, upgrading, and backing up.

New Release Note Format

Table 1 Document Revision History

Date	Revision History
Revised: 2018-10-26	Release 6.1.0-486 (SP1) is available and this document has been revised. The following sections were updated: <ul style="list-style-type: none"> ■ Added International Language Packs information ■ Resolved Defects in Release 6.1.0-486, page 35 ■ Open Defects in Release 6.1.0-486, page 36
Updated: 2018-08-01	Updated new default password string for both the default DMP administrator password and the default web UI administrator. See New Default Passwords, page 29 .
First Published: 2018-07-10	Announcing Cisco Vision Dynamic Signage Director, Release 6.1.0-363.

New Release Note Format

We trimmed the Release Notes to be leaner and more relevant. We hope you'll agree. Find detailed information about the following topics in the [6.0 Release Notes](#) on Cisco.com.

Table 2 Information Available in Prior Release Notes 5.0 to 6.0

Material Found in Previous Release Notes	Material Found in Previous Release Notes
Browser and Flash Player Support	Touchscreen Devices and Driver Support
Series 3 DMPs: CV-HD and CV-UHD	TV Qualification for HDMI CEC Control of TV Power On/Off
Series 2 DMPs: DMP-2K and SV-4K	Unsupported Hardware
DMP Hardware Product IDs and Firmware	Security Information and Advisories
Server Support	API Summary
Product IDs for Software Licenses	Feature Summary by Media Player Model (very different from Release 5.0 to 6.0)
Platform 3 Server Support	Internationalization and Localization
Virtual Server Environment Support	New Hardware Supported
Cisco Vision Headend Support	Obsolete Features in 6.0
Cisco Unified Communications Support (IP Phones)	Installation Notes
Important Migration and Upgrade Notes and Restriction	Limitations and Restrictions
Deployment Guidelines for the DMPs	System Utilization Values
Media Player Maintenance Recommendations	Multicast Addressing Considerations for Multiple Environments
Open and Resolved Defects from Past Releases	CUCM 12 Support for IP Phones

Contents

- [Key Considerations for This Release, page 3](#)

Key Considerations for This Release

- [Known Issues with Firmware, page 3](#)
- [User Interface Changes, page 4](#)
- [New Features in Release 6.1, page 8](#)
- [Internationalization and Localization, page 30](#)
- [Upgrade Paths, page 31](#)
- [Resolved Defects in Release 6.1.0-608, page 34](#)
- [Resolved Defects in Release 6.1.0-505, page 34](#)
- [Open Defects in Release 6.1.0-505, page 35](#)
- [Open Defects in Release 6.1.0-486, page 36](#)
- [Resolved Defects in Cisco Vision Dynamic Signage Director Release 6.1.0-363, page 36](#)
- [Related Documentation and Resources, page 37](#)
- [Service and Support for Cisco Vision Dynamic Signage Director, page 39](#)

Key Considerations for This Release

For new customers:

For the newest Release 6.1, we **strongly** recommend that you install Release 6.1.0-363, (released July 10, 2018) and then upgrade (run an upgrade ISO) to Release 6.1.0-486, Service Pack (SP) 1, (released October 26, 2018), upgrade (run an upgrade ISO) to Release 6.1.0-505, (SP2), (released December 5, 2018), and then upgrade (run an upgrade ISO) to Release 6.1.0-608, (SP3).

For existing Release 6.1 customers:

We **strongly** recommend that you upgrade (run an upgrade ISO) to Release 6.1.0-486, Service Pack (SP) 1, (released October 26, 2018), upgrade (run an upgrade ISO) to Release 6.1.0-505, (SP2), (released December 5, 2018), and then upgrade (run an upgrade ISO) to Release 6.1.0-608, (SP3).

Running Backup:

You can only **restore a backup from the same version**. In other words: make a backup of your existing release data, whatever it is {6.1.0-363, 6.1.0-486 (SP1) or 6.1.0-505 (SP2)} **before** you upgrade to 6.1.0-608 (SP3). Then, if something goes wrong during the upgrade, you can revert to the Release 6.1.0-505 version and restore the 6.1.0-505 backup.

Note: Language packs are release-specific. You can install available language packs for Release 6.1, after you have installed or upgraded to Release 6.1 and when the language pack is available.

The ISO versions are available on Cisco.com here:

<https://software.cisco.com/download/home/283489263/type/283866237/release/6.1>

Known Issues with Firmware

- [Pink/Purple Tint on Displays, page 4](#)
- [Rotated 4K Output, page 4](#)
- [Time Localization in JavaScript, page 4](#)

Pink/Purple Tint on Displays

This release is currently using firmware version 7.0.92, 7.0.92.2, or 5.1.68.1, depending on the DMP type. See [Firmware Configuration for all Media Players, page 32](#). If you are experiencing any odd tinting on your displays, upgrade the firmware to 8.0.77. See [Cisco Vision Dynamic Signage Director Release Notes for Release 6.2](#).

Rotated 4K Output

Displaying an HTML page and rotated video while using a 4K output mode will cause the video to flicker. This is the case even if the video is not part of the HTML page.

Time Localization in JavaScript

The JavaScript `toLocaleTimeString()` call does not retrieve localized time formats (i.e. 24-hour vs. 12-hour clock). Instead, the hour/minute clock defaults to 24-hour time on the media player. The below code provides a workaround in JavaScript to display time using a 12-hour clock:

1. Create the following function:

```
function format12Hour(date)
{
  var zero = '0';
  hh = date.getHours();
  mm = date.getMinutes(); ss = date.getSeconds() if((hh % 12) == 0) hh = 12; else
  hh %= 12;
  // Pad zero values to 00 hh = (zero+hh).slice(-2); mm = (zero+mm).slice(-2);
  ss = (zero+ss).slice(-2);
  return hh + ':' + mm + ':' + ss + ' ' + ((date.getHours()
  < 12) ? 'AM' :
  'PM');
}
```

2. Optionally, to not display seconds information, replace the above "return" line with the following:

```
return hh + ':' + mm + ' ' + ((date.getHours() < 12) ? 'AM' : 'PM');
```

3. Implement the function in the HTML script as follows:

```
var dateString = (startJSDate.getMonth() + 1) + "/" + startJSDate.getDate();
if (!startDateTime.isDateOnly()) {
  dateString += " -- " + format12Hour(startJSDate);
}
```

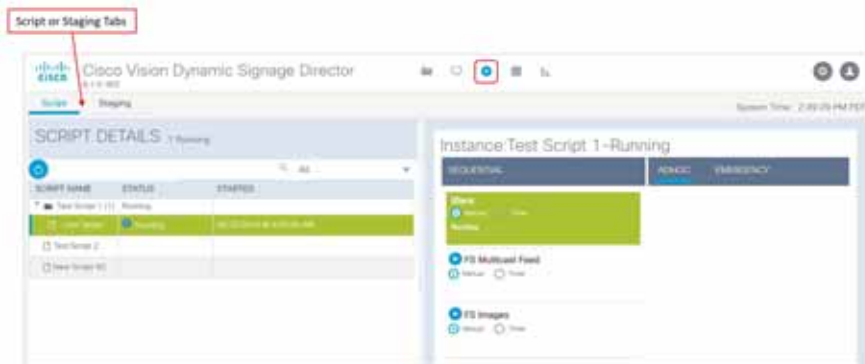
User Interface Changes

Script Control Redesigned

Another wave of the UI redesign to HTML5 is here. We added an icon and direct navigation to controlling your scripts from the **Library (Main Menu)**. Click **Script Control** to get the new Script Details screen ([Figure 1 on page 5](#)).

User Interface Changes

Figure 1 Script Control Screen



Manage when your scripts play using **Script Control**.

See [Release 6.1: Cisco Vision Dynamic Signage Director Operations Guide](#) for more details on how to use the UI.

WHAT IS IT

We are migrating the UI to HTML5. It’s not a 1-to-1 conversion from previous releases. A few things moved or changed, but we added a lot of icons, right-clicking for action boxes or detailed information, and hover help.

WHY USE IT

Use these interfaces to control and manage your scripts, when they run, set timers, duration, the days—like always.

WHERE TO CONFIGURE IT

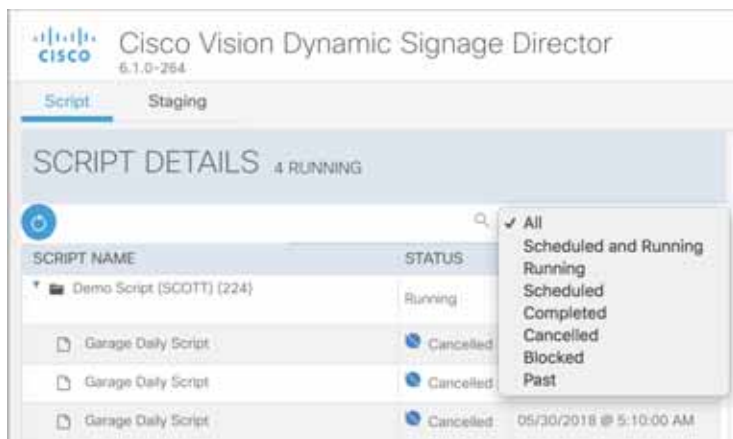
You do not configure this.

To *schedule* scripts, click **Event Management**.

To *control* scripts, click **Script Control**.

The Script Details pane is fully sortable, has a filter option ([Figure 2 on page 5](#)), shows the script name, the status of all your scripts, and when they are scheduled to start, the description of each script that you set, the current running state and if will be included in the Proof of Play record.

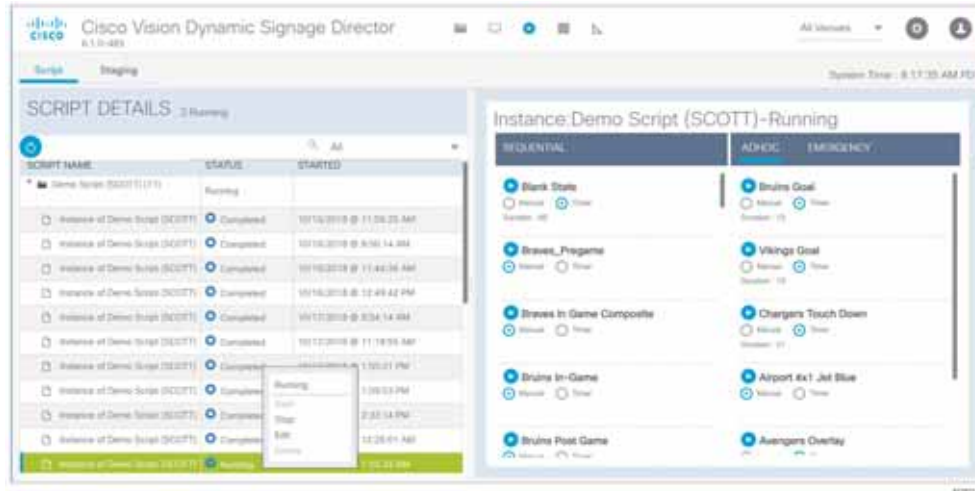
Figure 2 Script Details –States Drop-Down



Right-click to get An Action Box ([Figure 3 on page 6](#)). This one allows you to **Start, Stop, Edit** or **Delete** the script. Click the down arrow to get the Instance detail pane to appear.

User Interface Changes

Figure 3 Action Box



From here, you can **Run**, **Start**, **Stop**, **Edit**, and **Delete** scripts, and set the **Timer**.

Using **Event Management** you can schedule or create a new event, **Repeat a script event** (Figure 4 on page 6), choose whether your script will generate a **Proof of Play** log, gets **Staged**, or you need to **Force Stop** the script. Fill in the fields. Click **Save**.

Figure 4 Repeat Event Script Detail Screen



To start a script, choose the **Instance Name** and **Now, In**, the **Duration** and whether you want the script to get staged to the DMP and be included in the **Proof of Play** log. The Duration list unit is seconds (Figure 5 on page 7).

User Interface Changes

Figure 5 Start Script Screen showing Duration Drop-Down



If you need to stop a script, choose **Now**, **In**, or **At** allowing you to pick a calendar date and time (Figure 6 on page 7).

Figure 6 State Script Screen

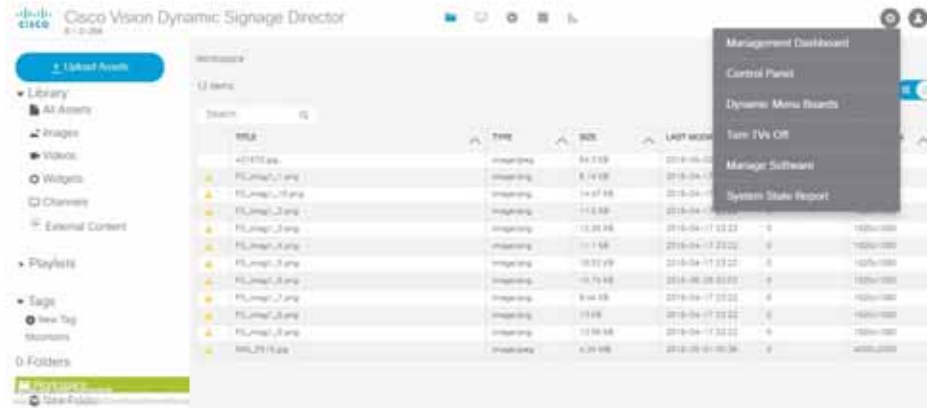


For detailed information about the new Script Control UI, see [Release 6.1: Cisco Vision Dynamic Signage Director Operations Guide](#).

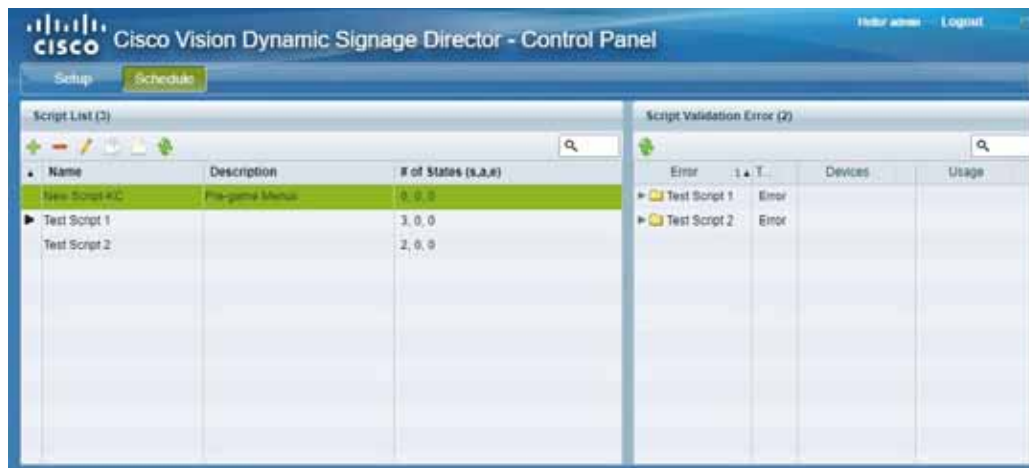
Control Panel

The **Control Panel** interface moved to the **Tools** icon drop-down.

New Features in Release 6.1



Create all the script and script states using **Tools > Control Panel > Schedule**.



New Features in Release 6.1

This section describes new features, enhancements and changes in support or behavior in Cisco Vision Dynamic Signage Director Release 6.1. It includes the following sections:

- [Flexible DMP Content Rotation, page 9](#)
- [Content Scaling, page 10](#)
- [Enhanced Content Library, page 10](#)
- [Content Validation, page 12](#)
- [Enhanced Content Replacement, page 13](#)
- [Smaller-Scale Director VM and Services, page 15](#)
- [Importing DMP or Data Integration Certificates to the DMP, page 17](#)
- [Returning Hostname on API Replies, page 18](#)
- [Support AES CBC Video Decryption Algorithm, page 20](#)

New Features in Release 6.1

- [Device Management Enhancements, page 20](#)
- [Expanded Outbound Trigger Capabilities, page 22](#)
- [Support Daktronics Football Feed, page 24](#)
- [Expand the System Health Notification Report, page 25](#)
- [Detect X-Frame-Options in External URLs, page 26](#)
- [Designer Enhancements for Widgets and Templates, page 27](#)
- [Cisco Vision Director to Use SHA512 Algorithm, page 28](#)
- [Auto-Cancel a Blocked Script Instance, page 28](#)
- [Stronger Password Policies, page 29](#)

Flexible DMP Content Rotation

WHAT IS IT

We introduced portrait displaying of content in Release 6.0. We enhanced that feature by allowing you to rotate the content 90 degrees and -90 degrees (or +270 degrees). This works for all content like videos, static images, widgets, local and multicast video, and external URLs.

WHY USE IT

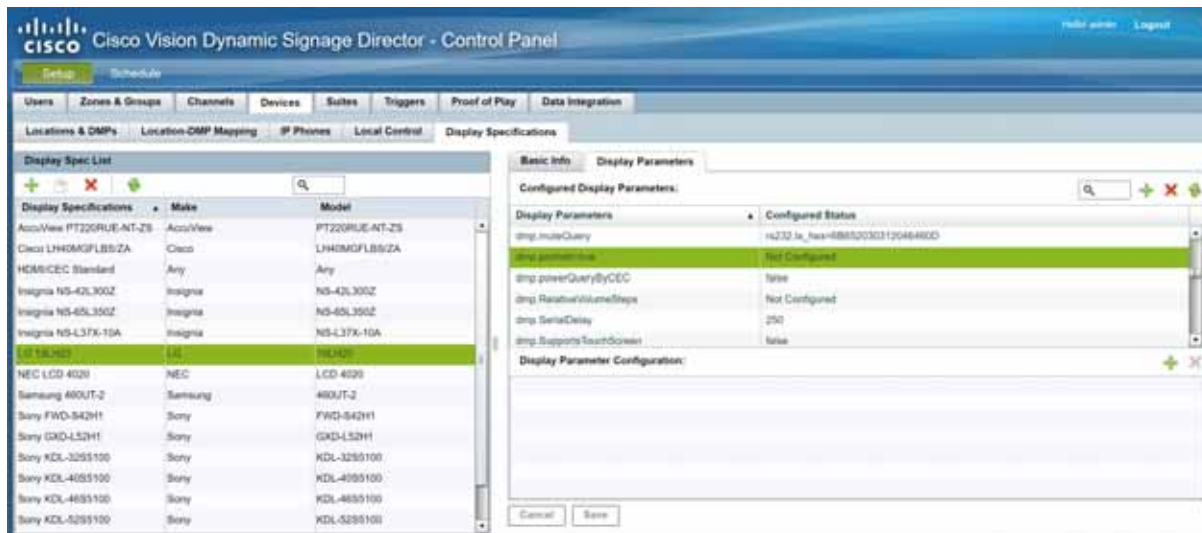
For situations where the display monitor has already been installed in a portrait position and to show your content the way you want, rotate the content.

WHERE TO CONFIGURE IT

Go to **Tools > Control Panel > Setup > Devices > Display Specifications**. Choose the specific display from the list on the left panel and click the **Display Parameters** tab in the right panel. Add a Display Parameter called `dmp.portrait` or `dmp.portrait.clockwise` and set them to “true” to achieve the proper rotation value you need (see [Figure 7 on page 10](#)).

By default, if you use `dmp.portrait` and set “true” to your content, it rotates the content 90 degrees. If you set `dmp.portrait.clockwise` to “true,” it will rotate the content 270 degrees (or -90 degrees).

Note: Reboot the DMPs after setting this parameter. Go to **Tools > Management Dashboard > DMP and TV Controls > DMP Commands > Reboot Device**.

Figure 7 Adding Content Rotation Specifics to Display Parameters

Below is a figure displaying rotated content 90 and -90 degrees. Use clockwise and counter clockwise.

Clockwise



Counter clockwise



Content Scaling

WHAT IS IT

We provided content scaling in previous releases for video to fill up a region of your display. Now we added content scaling for static images, widgets, local and multicast video, and external URLs.

WHY USE IT

If you have a large piece of content and you'd like to scale it down and keep the correct aspect ratio. If your image or widget resolution is smaller than the region, the content resolution will not scale up.

WHERE TO CONFIGURE IT

No need to configure. This is just an added feature/ability of Cisco Vision Director. For video walls, videos always scale to the region. However, if your region is out of spec, it may not display. For non-video, content will be scaled down (scale-to-fit for images and widgets, maintaining aspect ratio; scale-to-fill for external URL). This feature will scale non-video content down so it will not spill over beyond the region size.

Limitation: If you have content that is too small for your region, you can scale up—for video only.

Best practice: Match content resolutions with region resolutions.

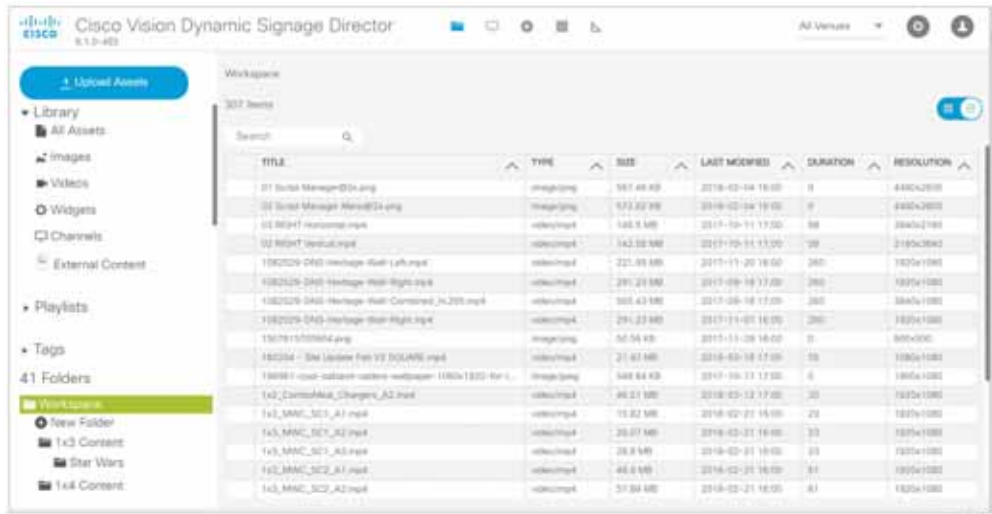
Enhanced Content Library

WHAT IS IT

We changed the default for the Library page to show List View, instead of the icon view (Grid View). This fits more pertinent information in the pane. See [Figure 8 on page 11](#).

New Features in Release 6.1

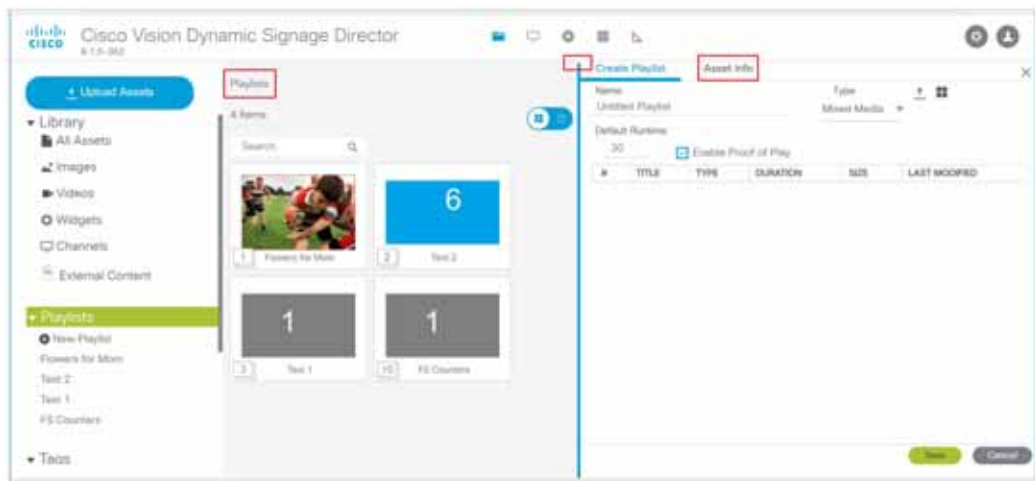
Figure 8 Default Library View is List View



WHY USE IT

We greatly enhanced how you can display this information by adding adjusting bars to stretch or shrink a panel, when creating/editing a playlist. To get the handles, click **Playlists** at the top of the middle panel, then position your cursor to get the crosshairs at the top of the panels, near the **Create Playlist** tab, and drag.

Figure 9 Adjusting the Playlist Screen



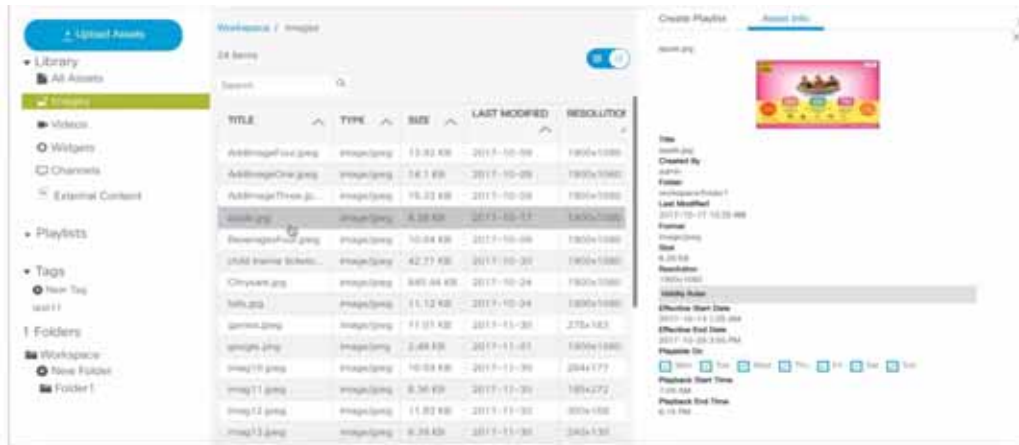
Now you can double click on a playlist from the Library left panel and get the playlist you chose to show in List or Grid View. We downsized the asset icons to give you better visibility (Figure 9 on page 11).

WHERE TO CONFIGURE IT

When you click on one of the items in the playlist, you get Title, Type, Duration, Size, and Last Modified columns to give you greater granularity for your assets.

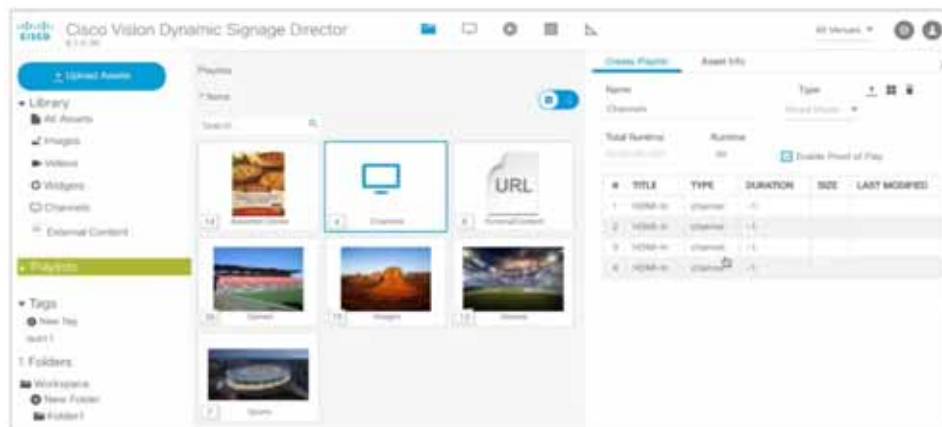
If you want to see more metadata on your content, click **Asset Info** at the top of the right panel. The metadata appears for the asset you chose (Figure 10 on page 12) and you can preview it.

Figure 10 More Metadata from the Library Screen



When you click to Grid View in the Playlist Workspace panel, the number shown in the bottom left corner of the asset icons shows the number of items in that playlist (Figure 11 on page 12). In Figure 11, the Channel Playlist has four pieces of content, as shown in the right panel.

Figure 11 Playlist Specifics



Content Validation

WHAT IS IT

We added a Warning symbol if you upload a piece of content that is not supported (Figure 12 on page 13). To clear the warning, check the **Management Dashboard** for accepted values.

Note: This warning will only appear if you first configured in the **Management Dashboard** what content resolutions and aspect ratios you will allow for imported images and videos.

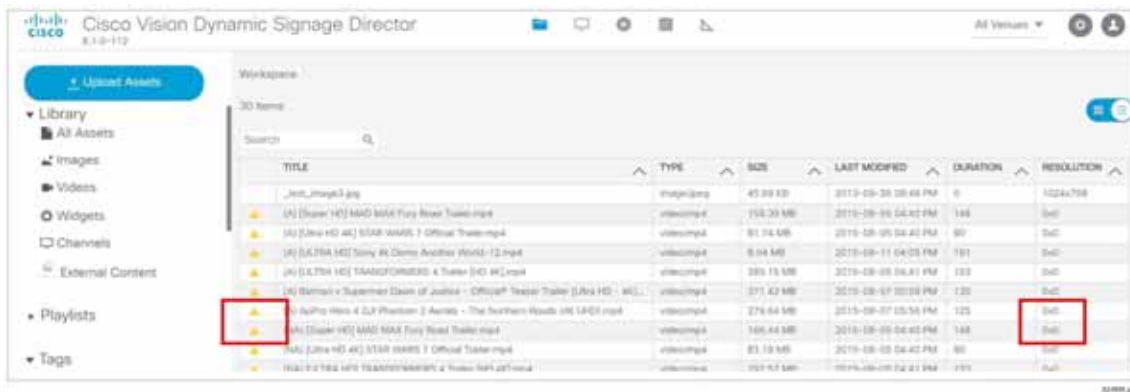
WHY USE IT

To check the validity so your content will appear as scheduled and planned with no errors. Use this feature to flag assets that may be outside of your content specification guidelines, based on aspect ratio and dimensions/resolutions. For example, if you set the value to “true,” all assets that do not have the resolution set in the registry will be invalid. If you set it to “false,” then all assets that have resolution greater than the value set in the registry show as invalid. So if you set false and 1920x1080, anything from 0x0 to 1920x1080 will be considered valid.

WHERE TO CONFIGURE IT

Go to **Tools > Management Dashboard > Dynamic Signage Configuration > System Configuration > Dynamic Signage Director Settings > Content Validation Parameters**. Align the resolution values to the planned use of the content item. See [Figure 12 on page 13](#).

Figure 12 Warning Symbol for Content Validity



It will not block your content upload, only warn you.

Enhanced Content Replacement

WHAT IS IT

Allows you to update a playlist and save it, then update *another* playlist, without waiting for the first content replacement command to finish. Content Replacement is defined as making changes to the playlists or content without restarting the script.

WHY USE IT

You can do multiple content replacements (playlist change or file upload) without waiting for the prior content replacements to finish. There are a couple limitations:

- You can only have one replacement per content item or one replacement per playlist queued. In other words, you can't replace the same content a second time until the first replacement process finishes.
- You cannot make **another** change to the same playlist until the first change to that playlist finishes.
- All file uploads, even if you did not select content replacement, will temporarily block another upload of an item of the same name.

TIP: Check your work thoroughly before you start the content replacement process. That way, you won't need to go back and try to make more changes to your playlists before they get staged.

Note: Content replacement can invalidate the Proof of Play report.

WHERE TO CONFIGURE IT

This feature concerns uploading content ([Figure 13 on page 14](#)) to the Library (Director Server). Once completed successfully, this triggers uploading and staging to the DMP specified.

New Features in Release 6.1

Figure 13 Upload Content Dialog Box**Figure 14 Script Screen**

Choose **Replace now** (Figure 14 on page 14) or **Replace at script start** (Figure 15 on page 14).

Replace now causes the new content to get replaced on Cisco Vision Director and on the specified DMP.

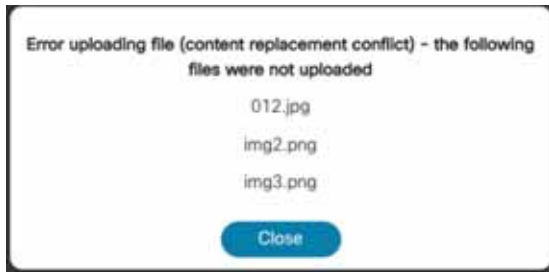
Replace at script start will only replace content on Cisco Vision Director and when the script restarts, the new content will push to the specified DMP.

Figure 15 Replace at Script Start Option

To perform a replacement, check the box by the file name and click **Replace**. If there is a previous upload that hasn't fully processed or you try to upload the same assets again, an error appears (Figure 16 on page 15).

New Features in Release 6.1

Figure 16 Error Uploading File Message



Now you can perform content replacement on a second playlist (it cannot be the same playlist) even if the first playlist isn't done processing. With the newest content replacement enhancements, you can make changes to playlists, even if they have started.

Limitations to Content Replacement Enhancement

1. The Proof of Play may become invalid if you do content replacements.
2. Content replacement only applies to local video and image files only (not channels, external URLs, or widgets).
3. Playlists containing 1 item will not content replace (change). To make this work:
 - a. Create a playlist of the same item twice
 - or
 - b. Change states to a different state with a different playlist, then return to the prior state

IMPORTANT: If the DMP performs a reboot during this uploading and staging process, check your script and be sure the process completed and the replaced content commands will get pushed to the DMP. There is no auto-retry command to the DMP of the staging to make certain the content gets replaced. **Workaround:** Go to the DMP staging screen and manually stage the content to the DMP.

Smaller-Scale Director VM and Services

WHAT IS IT

A scaled-down version of the solution offering roughly one quarter the available memory (RAM)—a quarter of the standard configuration. These minimal parameters depend largely upon the number of DMPs you have and how much content there is planned for the system. If you have significant plans for Menu Boards, Proof of Play collection, or increasing the number of DMPs, then up the CPU count. Content in any form (video files to image files) and ability to delete old content, back ups, and log files may require more initial storage than the minimum. In a VM environment, this is adjustable to the surrounding resources. Plan ahead.

Table 3 Requirements for Small-Scale Cisco Vision Dynamic Signage Director

System Component	Minimum Requirement
Processor	Two processors each equivalent to an Intel Xeon Processor E5-2640 (15 MB cache, 2.50 GHz clock, 7.20 GT/s Intel® QPI)
Forward write (fwrite) operations per second	2500

Table 3 Requirements for Small-Scale Cisco Vision Dynamic Signage Director

System Component	Minimum Requirement
Virtual CPUs ¹	~6
Virtual Disk Space	225 GB
Virtual RAM (VRAM)	8 GB ²

1. Hyperthreading can be used. Be sure that the BIOS is properly configured to enable it.
2. Reserve 8 GB of VRAM for installation and operation of the Cisco Vision Dynamic Signage Director system. Allow for additional storage for the ESXi OS.

WHY USE IT

If your needs fall into the hundreds of DMPs, not thousands, this may be a much better solution.

WHERE TO CONFIGURE IT

IMPORTANT: When installing from a full ISO, if the software detects that the available memory (RAM) is below what is specified in the standard configuration, it automatically sets up for small configuration. You can change this via the TUI.

1. In the TUI, choose **Option K, Setup Memory Profile** from the menu list ([Figure 17 on page 16](#)).

Figure 17 Set Up Memory Profile For Cisco Vision Director

```

Main Menu > Cisco Vision Server Administration

Please choose one of the following menu options:

a) Display Software Version
b) Upgrade Server
c) Restart Dynamic Signage Director software
d) Shutdown Dynamic Signage Director software
e) Setup automatic backup and restore
f) Restore a 6.0 Backup
g) Re-Run CiscoVision initial configuration
h) Retention Policy
i) Database Maintenance
j) Failover
k) Setup Memory Profile
l) Reboot
m) Power Off
R or < or *) Return to prior menu

```

2. Choose 2 Mini (Small) ([Figure 18 on page 16](#)).

Figure 18 Setting up A Smaller Cisco Vision Director

```

Cisco Vision Dynamic Signage Director Configuration Menu

Hostname: qa-dscc-01
IP address: 10.194.170.179
Software version: 6.1.0 build 237

-----
0. - [Cancel]
1. - Standard (Large)
2. - Mini (Small)

Your current memory profile is set to 'Mini (Small)'.
Please select a number from above and press enter:

```

3. Type C to confirm the change ([Figure 19 on page 17](#)). You may need to change memory allocation for this host. Changes will take effect after rebooting the server.

Figure 19 Confirm Change

```
0. - [Cancel]
1. - Standard (Large)
2. - Mini (Small)

Your current memory profile is set to 'Mini (Small)'.
Please select a number from above and press enter: 2

You selected 'Mini (Small)' profile
Are you sure you wish to move to 'Mini (Small)' profile?
Push R to return to main menu or C to continue.
C

Memory profile change complete.
You may need to change memory allocation for this host.
Changes will take effect after rebooting the server.
Press any key to return to the menu.
```

Note: If the recommended resources (memory/CPU) for the standard deployment are not provisioned for the virtual machine when doing a fresh install, the system will be set to the small configuration.

Importing DMP or Data Integration Certificates to the DMP

WHAT IS IT

A web-based UI allowing users to manage certificates. Imported certificates are global for deployment.

WHY USE IT

For DMP Certificates: To support external URLs, the DMP may need to import certificates to render the website correctly. It will allow customers to upload new DMP certificates, change, and delete DMP certificates from the DSD server. Also, the list is fully sortable.

For Data Integration Certificates: To support secure data integration endpoints, the keystore imports data certificates to successfully ingest data properly.

The UI will list the certificates that are imported. It will show the Name of the certificate, the File name, the Size of the file, the Upload Date, the Issuer Name, and when the certificate is valid.

WHERE TO CONFIGURE IT

1. Go to **Tools > Manage Software**. Choose the **Certificates** tab.
2. Expand the DMP Certificate list or the Data Integration Certificate list ([Figure 20 on page 18](#)).

Figure 20 Certificates

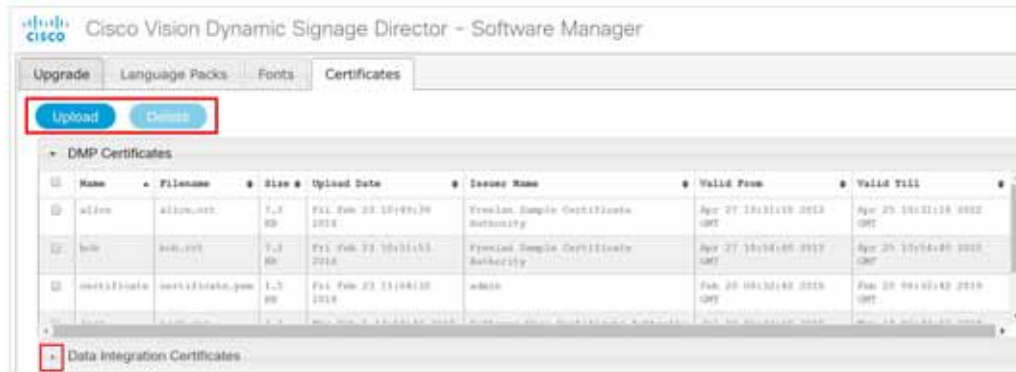


Figure 21 Certificates Upload Screen



- Choose a file (Figure 21 on page 18), click **Upload**, it appears as uploaded.

When you delete a file, you get a warning dialog box making sure you know you are deleting a certificate. Click **Delete**. You can delete all by clicking the check box near the **Name** column.

Note: After uploading a certificate, stage content so the DMP certificate gets pushed to the DMP. Reboot the DMP so the new certificate takes effect. Go to **Tools > Management Dashboard > DMP and TV Controls > DMP Commands > Reboot Device**. Use **Script Control** to manually start content staging from the Cisco Vision Director UI.

For Data Integration Certificates:

If you upload a new data integration certificate to Director or delete an uploaded certificate from Director, restart the data integration application so the change reflects on the data integration datasource. To restart the data integration application: go to **Tools > Management Dashboard > Tools drawer > Settings tab > Data Integration > Restart Application**.

Returning Hostname on API Replies

WHAT IS IT

Allows channel logo URLs to use an external host name instead of the IP address of the server of Cisco Vision Dynamic Signage Director. This applies to local control APIs for channel logos.

WHY USE IT

To designate a name for the server instead of using the IP address. If the Director address is setup in your DNS, and applications that consume the local control API reference Director via the hostname, you may want the API to use the DNS name of Director instead of its IP address.

WHERE TO CONFIGURE IT

In **Management Dashboard**, we introduced a new server registry called **ExternalServerName**. It only applies to local control APIs for channel logos. The default is blank (Figure 22 on page 19). If you set the field to a specified name, save, and reissue the command, you get the name you chose in the channel.

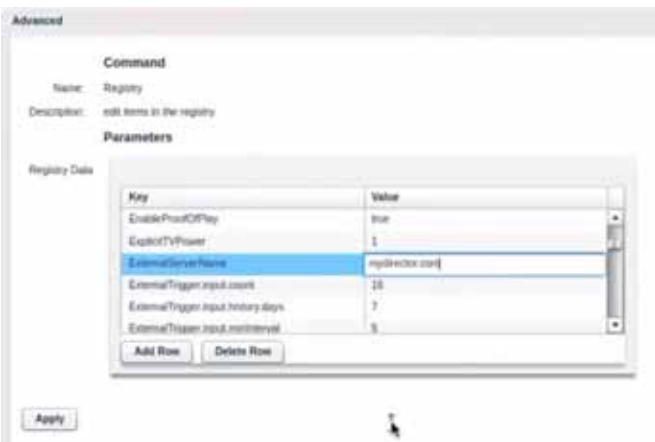
New Features in Release 6.1

From the Main Menu, click **Tools > Management Dashboard > Tools > click Advanced tab > Registry**. Scroll down the Key Parameters to **ExternalServerName**. Type in a name (in this example, `my.director.com`, [Figure 23 on page 19](#)) and choose **Apply**.

Figure 22 Channel Name for Logo



Figure 23 Adding External Server Name into Field



Support AES CBC Video Decryption Algorithm

WHAT IS IT

This feature allows the DMP to decrypt and display a multicast stream that is encrypted using AES CBC.

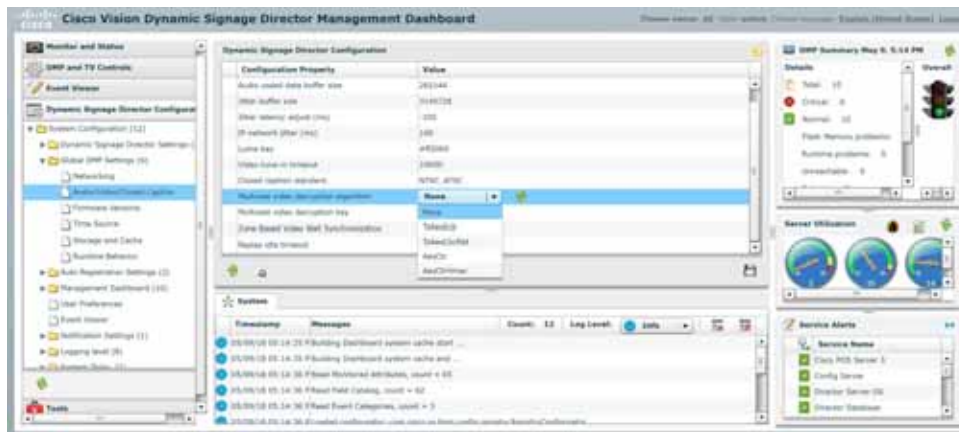
WHY USE IT

When a video feed/source is not encrypted, the decryption key passed to the DMPs will simply ignore it. The DMP will be able to play the video. If the video feed/source is encrypted, the DMP can decode the AES CBC encrypted streams.

WHERE TO CONFIGURE IT

1. Go to **Tools > Management Dashboard > Dynamic Signage Director Configuration > System Configuration > Global DMP Settings > Audio/Video/Closed Caption**.
2. Choose “TsAesCbcRbt” from the “Multicast video decryption algorithm” drop down for AES CBC decryption (Figure 24 on page 20).
3. Enter the decryption key into the “Multicast video decryption key” field.
4. Reboot the DMP. Go to **Tools > Management Dashboard > DMP and TV Controls > DMP Commands > Reboot Device**.

Figure 24 AES Decryption Algorithm



Device Management Enhancements

WHAT IS IT

We added multiple device selection in Zones, Groups, or individually to expand Device Management capabilities. Some other updates are:

- Hover over the icons in the top right for functions.
- Supports multiple device selection using **Ctrl** and **Shift** keys for functionality such as TV On/Off, DMP Reboot, and Refresh. Select a range or individual devices.
- Multi-select remote control (new icon in UI) operations.
- Click the Refresh icon to refresh your preview, without having to wait for the next auto-refresh cycle to show a preview. This works for multiple DMPs, too.
- Within a Zone or Group, you can select multiple DMPs and perform a function (such as turn devices On/Off).

New Features in Release 6.1

- Search channel names in the detail box.

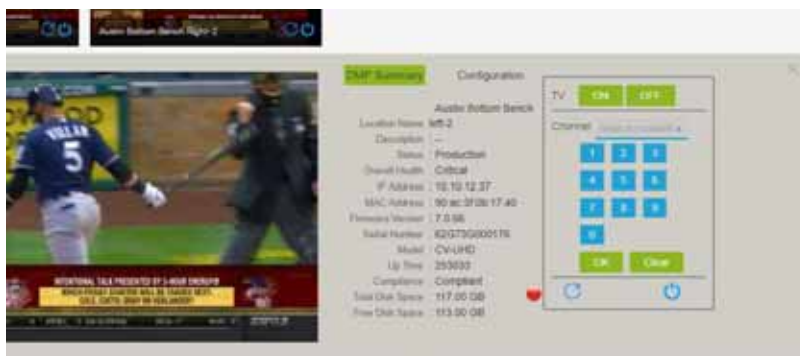
WHY USE IT

To choose many devices in a Group or Zone, use **Ctrl** and **Shift** keyboard shortcuts to allow you to select large amounts of devices to perform Refresh, Reboot, TV ON and TV OFF functions. This speeds device control functions.

WHERE TO CONFIGURE IT

1. Go to **Device Management**.
2. Choose a **Zone, Group**, or device from the left panel.
3. In either Gridview or Thumbnail view, select as many devices as you need. Use **Ctrl (Control)** or **Shift** to select individual devices, skip around, or choose a range.
4. Choose a function to perform: **Refresh, Reboot, TV ON, TV OFF**, or search **Channel Name** (Figure 25 on page 21).

Figure 25 Device Management Screen

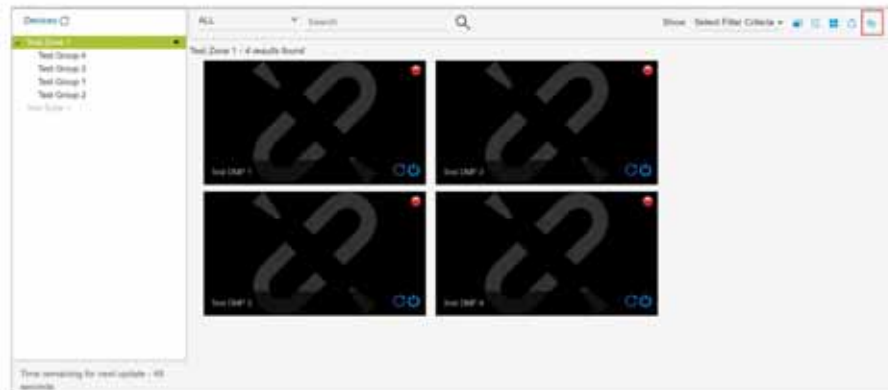


Or, select multiple devices from Gridview and perform an action (Figure 26 on page 21).

Figure 26 Select Multiple Devices with Shift and Control Keys



You can also perform these actions using the Remote Control icon (in red) (Figure 27 on page 22). Refresh All with a single click.

Figure 27 Remote Control Icon

Expanded Outbound Trigger Capabilities

We added two outbound trigger sends (PUT/DELETE) that Cisco Vision Director can accept from an external device or service when a script starts, stops, or enters into a specific state.

WHAT IS IT

New Outbound trigger PUT command: plus the ability to send payload with either the POST or PUT commands.

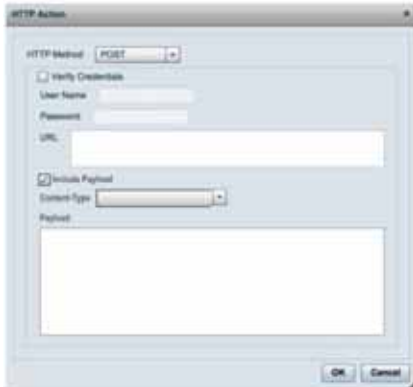
New Outbound trigger DELETE command: deletes the action on the script.

Using HTTP method GET/DELETE, the action dialog is unchanged.



Using HTTP method POST/PUT, the action dialog changed to the following:

New Features in Release 6.1



WHY USE IT

New to Cisco Vision Director 6.1 is the ability to send a PUT command plus the ability to send payload with either the POST or PUT commands. This allows more complex integrations.

WHERE TO CONFIGURE IT

1. Go to **Tools > Control Panel > Setup**.
2. Click **Triggers** tab.
3. Click **Output Triggers** tab (Figure 28 on page 23).

Figure 28 Output Trigger Example



Figure 29 Output Trigger Action

The HTTP method of GET/PUT/POST/DELETE determines if there is included payload. In all cases, a user name and password can be included in the HTTP header of the outgoing message as a base 64 encoded “Authorization: Basic.”

```
Authorization: Basic ZnJlZDp0aGF0cyBtZQ==
```

For more information and examples on how to use output trigger commands, see [Release 6.0: Configuring Cisco Vision Dynamic Signage Director for External Triggers](#).

Support Daktronics Football Feed

WHAT IS IT

This feature provides the capability for Dynamic Signage Director to integrate with the Revision 1 of Daktronics Football feed.

WHY USE IT

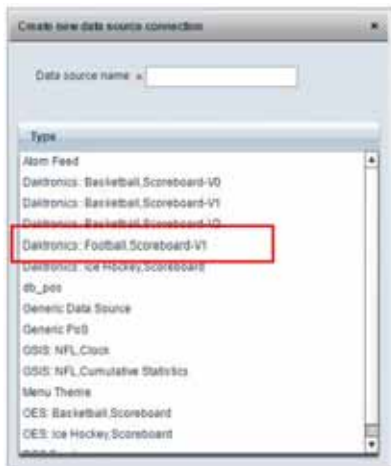
Some customers use Daktronics scoreboards and requested support for Daktronics Football scoring schema, similar to what is currently provided for Basketball/Hockey by Cisco Vision Director.

WHERE TO CONFIGURE IT

1. Go to **Tools > Control Panel > Setup > Data Integration > Data Sources** tab.
2. Click the green “+” to Create a New Data Source Connection ([Figure 30 on page 25](#)).

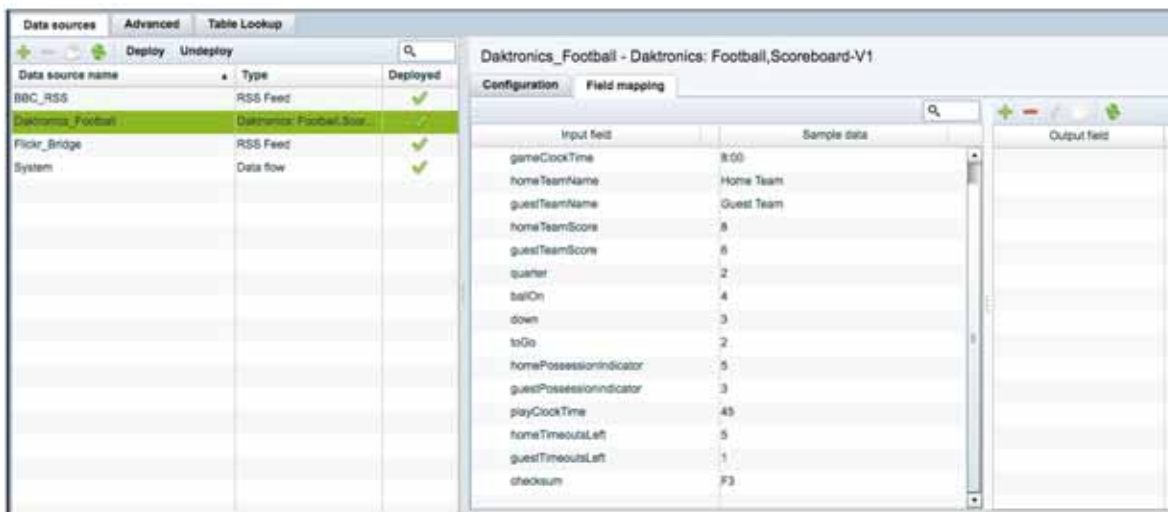
New Features in Release 6.1

Figure 30 Create New Data Source Connection



Here is a sample format of what the Daktronics football specification will look like (Figure 31 on page 25).

Figure 31 Specifications used on Football Scoreboard



Expand the System Health Notification Report

WHAT IS IT

The Daily health report will now include the status of various service endpoints (such as DMPs) described in HPMMonitoredServices.xml.

WHY USE IT

To see server health information, in addition to the DMP health report. The status can be any one of the following: UNKNOWN, NORMAL, NONOPTIMAL, CRITICAL.

The endpoint of a monitoring service such as DSD server CPU, memory, and storage utilization.

WHERE TO CONFIGURE IT

Nothing to configure. New health information will be included in the daily health report automatically.

Detect X-Frame-Options in External URLs

WHAT IS IT

This enhancement checks if the external URL asset or external URL channel contains XFrame-Options in the HTTP header that prevents it from being rendered by the DMP.

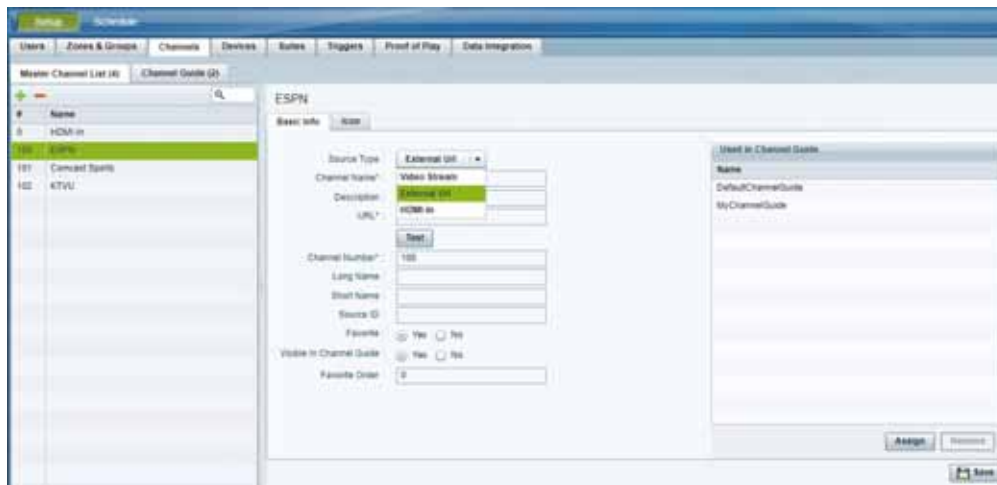
WHY USE IT

Use this feature to validate if the external URL has the HTTP header X-Frame-Options preventing the page from being rendered by the DMP, since the DMP renders external URL content in an I-frame.

WHERE TO CONFIGURE IT

1. Go to **Tools > Control Panel > Setup > Channels** tab.
2. Click **Basic Info** tab.
3. In **Source Type** drop-down menu, select: **External URL**. The **Test** button appears (Figure 32 on page 26).

Figure 32 Testing External URL Content for X-Frame-Option



4. Fill in the fields and click **Save**.
5. Click **Test**.

If X-Frame-option is present in the content, an error message appears.



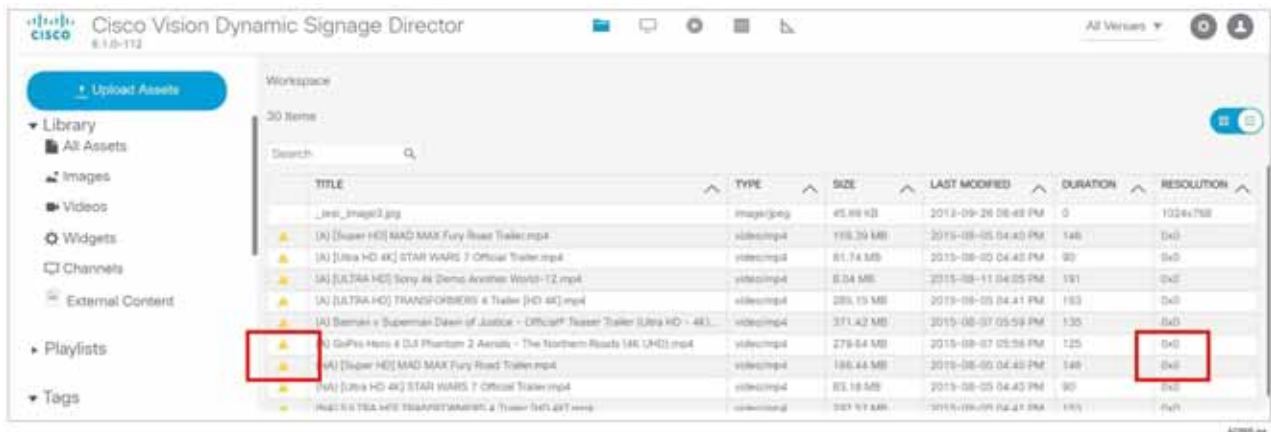
The TEST function is also available whenever you create a new external URL connection.



New Features in Release 6.1

If your external content doesn't render to the DMP, you get a caution symbol until you clear it (Figure 33 on page 27).

Figure 33 Caution Symbol Indicating this Content will Not Render on the DMP



Designer Enhancements for Widgets and Templates

WHAT IS IT

To make it more useful and align with the Main Menu **Library** screens, we changed the default **Designer Widget/Template** screen. Here are the newest enhancements:

- List view is now the default screen
- All columns are sortable and resizable. Drag the column widths in the header rows.
- Right click anywhere in the list and get an Action Box (Figure 34 on page 27).

WHY USE IT

Get to details on your screen designs faster.

WHERE TO CONFIGURE IT

Go to **Designer**. Click **Widget** or **Template**.

Figure 34 Action Box for Widgets/Templates



Cisco Vision Director to Use SHA512 Algorithm

WHAT IS IT

Using TUI, when you perform an installation of Dynamic Signage Director (DSD), the system automatically generates a SHA512 certificate.

WHY USE IT

By using the SHA512 algorithm during an installation, the certificate provides a higher degree of security.

WHERE TO CONFIGURE IT

Nothing to configure.

Auto-Cancel a Blocked Script Instance

This feature has been backported to Release 5.0 Service Pack 5 and Release 6.0 Service Pack 1.

WHAT IS IT

This feature auto-cancels a blocked script instance after a specified number of seconds.

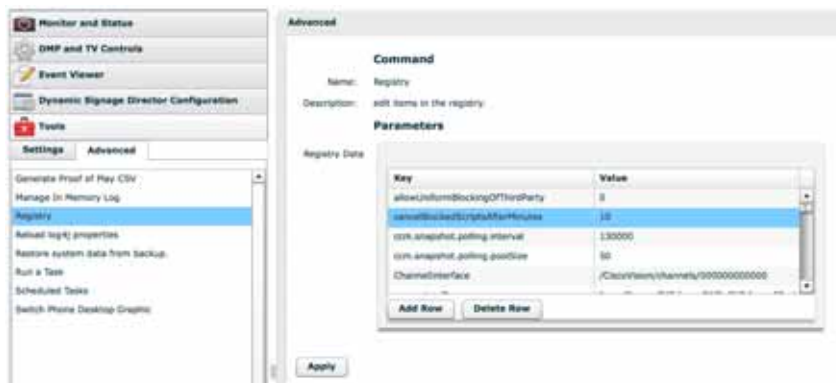
WHY USE IT

If an instance of script (S1) is running, that same script may be requested to run causing the script to be blocked. This may be possible if S1 is started manually and is later started again via schedule or trigger, without first stopping the manually started instance.

WHERE TO CONFIGURE IT

To enable auto-cancel of blocked scripts:

1. Go to **Tools > Management Dashboard > Tools drawer > Advanced tab > Registry**.
2. Add registry key: **cancelBlockedScriptsAfterMinutes**.
3. Type in a Value.
4. Click **Apply**.



The default is -1, meaning do not auto cancel blocked scripts.

Stronger Password Policies

WHAT IS IT

Strengthening the password policies for a fresh install. If upgrading, existing passwords are kept.

WHY USE IT

Use it to enforce stricter passwords, increasing the security of the system.

WHERE TO CONFIGURE IT

New password policies:

1. Must have at least 1 lower case character (a-z).
2. Must have at least 1 upper case character (A-Z).
3. Must have at least 1 numerical character (0-9).
4. Must have at least 1 special character. Special characters are @ # \$ %
5. Must be 8-20 characters long.
6. Must not contain any of the following characters: space, tab, newline, linefeed, or backslash (\)
7. Must not contain a character sequence from a predefined list maintained in a dictionary.

New Default Passwords

There is a default web UI administrator user password and there is a DMP administrator password. The new default password for both is:

C-V1\$!0n

Note: The boldface type is only for clarity to read here.

Passwords after Upgrading

When upgrading an existing installation, existing passwords are kept.

Passwords after Fresh Install

Role: Administrator

After fresh install, the default administrator user is prompted to change the password on the first login. Starting with Release 6.1, the new password must adhere to the password policies AND use the new default password listed above, or the password is rejected.

DMP Admin Password

The default password for fresh install is C-V1\$!0n. When changing your password, if you do not choose a valid password, the error message indicates which rule is inviolate.

Internationalization and Localization

Caution: A Cisco Vision Dynamic Signage Director system that is using language support from Release 6.0, will lose that support when upgraded until language packs for the new release are available and installed.

Internationalization (i18n)

Internationalization (known as *i18n*) support refers to the software infrastructure that is designed to accommodate multiple language translations (localization) without requiring additional engineering changes to that software.

The Cisco Vision Dynamic Signage Director Release 6.1 software supports i18n for the following general areas of the solution:

- Control Panel
- Dynamic Menu Board application
- Management Dashboard
- IP Phone user interface
- Software Manager
- TV user interface

Localization (L10n)

Localization (known as *L10n*) refers to the implementation of the specific regional language translation support within a software interface that has been designed for i18n. English is the default language.

Note: Certain locales are not supported, such as right-to-left languages.

Language Packs for Localization

Note: Language packs are release-specific. They follow the release of a Cisco Vision Dynamic Signage Director version by several weeks. Install available language packs after you install or upgrade to a release. Language packs are posted in the same download location on cisco.com as the release.

Cisco Vision Dynamic Signage Director Release 6.1 provides the flexibility to upload and install only the specific language(s) that you want to support through the independent installation of Language Packs. The upload and installation of the language packs is performed using the Software Manager from the Cisco Vision Dynamic Signage Director main menu. For more information about how to install language packs, see the [Cisco Vision Software Installation and Upgrade Guide: Dynamic Signage Director Release 6.1](#).

The supported languages in Cisco Vision Dynamic Signage Director Release 6.0.0-740 and later are:

- Deutsch (de_DE)
- English (en_US). This is the default locale in all Cisco Vision Dynamic Signage Director releases.
- French (fr_FR)
- Japanese (jp_JN)
- Portuguese (pt_BR)
- Russian (ru_RU)
- Simplified Chinese (zh_CN)

Upgrade Paths

- Spanish (es_ES)
- Swedish (sv_SE)
- Traditional Chinese (zh_TW)
- Turkish (tr_TR)

For more information about requirements and restrictions in configuring localization in Cisco StadiumVision Director, including IP phone support, see the [Cisco StadiumVision Director Localization Guide](#).

Translated User Documents

Available versions of translated end-user documents for Cisco Vision Dynamic Signage Director can be found at:

<http://www.cisco.com/c/en/us/support/video/stadiumvision/tsd-products-support-translated-end-user-guides-list.html>

Upgrade Paths

Note: Release 6.0.0-740 is the minimum supported software version for Cisco Vision Dynamic Signage Director.

Release 6.0 Upgrade Sequence

6.0.0-740 > 6.0.0-832 (SP1) > 6.0.0-913 (SP2) > 6.1.0-363 > 6.1.0-486 (SP1) > 6.1.0-505 (SP2) > 6.1.0-608 (SP3)

We strongly recommend you upgrade to Release 6.1.0-608 (SP3) from Release 6.1.0-505 (SP2).

Note: For more information about the paths and sequences, see [Key Considerations for This Release, page 3](#).

Table 4 Supported Upgrade Paths in Release 6.0 to Release 6.1.0-363

From:	To:
Release 6.0.0-544	Release 6.0.0-740
Release 6.0.0-740	Release 6.0.0-832 (SP1)
Release 6.0.0-832 (SP1)	Release 6.0.0-913 (SP2)
Release 6.0.0-913 (SP2)	Release 6.1.0-363
Release 6.1.0-363	Release 6.1.0-486 (SP1)
Release 6.1.0-486 (SP1)	Release 6.1.0-505 (SP2)
Release 6.1.0-505 (SP2)	Release 6.1.0-608 (SP3)

Installation and Upgrade Files

Cisco Vision Dynamic Signage Director Release 6.1 software is available in different types of ISO files based on the installation or upgrade environment.

ISO Files

ISO files are packaged images that are available in two versions:

Upgrade Paths

- An ISO *full* image—The full ISO file is to be installed only on brand new Cisco Vision Dynamic Signage Director servers that have no prior Cisco Vision Director (or StadiumVision) software version installed.
- An ISO *upgrade* image—The upgrade ISO file is built for processing using the TUI upgrade utility or Software Manager.

Note: Beginning in Release 6.0, all ISO file downloads support a SHA-256 hash (sha256sum) for file integrity verification. For ISO files that support upgrades from Release 5.0, an MD5 checksum is still used and supported. Once in Release 6.0, the Software Manager will only generate a sha256 checksum.

Software Download

Note: You are eligible to obtain information about how to access the Cisco Vision Dynamic Signage Director full ISO file or language packs after you have purchased the proper licensing. Contact Cisco Technical Support for information about how to download these files.

If you have a Cisco CCO account and a contract for software download, you can download the Cisco Vision Dynamic Signage Director upgrade files on the Cisco.com software download site at:

<https://software.cisco.com/download/release.html?mdfid=283489263&flowid=31962&softwareid=283866237&release=6&relind=AVAILABLE&rellifecycle=&reltype=latest>

Firmware Configuration for all Media Players

The media players require that a minimum—or *base*—firmware version is provisioned before they can be upgraded to the *production* firmware version supported in Cisco Vision Dynamic Signage Director Release 6.1.

Note: The CV-HD and CV-UHD media players require a different *base* firmware than the SV-4K and DMP-2K media players. [Figure 35 on page 32](#) shows the auto-registration configuration and [Table 5 on page 33](#) identifies the required firmware properties for the CV-UHD and CV-HD in Release 6.1.

Figure 35 Firmware Image and Version Properties Required to Provision the CV-UHD and CV-HD



Upgrade Paths

Table 5 Required Firmware Properties for the CV-UHD and CV-HD in Release 6.1

Release Number	Firmware Property	Value for Release
6.1.0-363 6.1.0-486 6.1.0-505 6.1.0-608	Firmware image to use (CV-UHD, CV-HD)	DMP-Series3-7.0.92.bsfw DMP-Series3-7.0.92.2.bsfw* (optional)
6.1.0-363 6.1.0-486 6.1.0-505 6.1.0-608	init.version (CV-UHD, CV-HD)	7.0.92 7.0.92.2* (optional)
6.1.0-363 6.1.0-486 6.1.0-505 6.1.0-608	Base firmware image to use (CV-UHD, CV-HD)	DMP-Series3-7.0.92.bsfw DMP-Series3-7.0.92.2.bsfw* (optional)
6.1.0-363 6.1.0-486 6.1.0-505 6.1.0-608	base.version (CV-UHD, CV-HD)	7.0.92 7.0.92.2* (optional)

* using encrypted channels.

Note: Using firmware 7.0.92.2 reduces the time it takes to tune into a CBC encrypted multicast video stream. We will continue to support firmware 7.0.92. If you are using AES CBC encryption of your video feeds, we highly recommend using firmware 7.0.92.2 to reduce video decryption time.

Figure 36 on page 33 shows the auto-registration configuration and Table 6 on page 33 identifies the required firmware properties for the SV-4K and DMP-2K in Release 6.1.

Figure 36 Firmware Image and Version Properties Required to Provision the SV-4K and DMP-2K**Table 6 Required Firmware Properties for the SV-4K and DMP-2K in Release 6.1**

Release Number	Firmware Property	Value for Release
6.1.0-363 6.1.0-486 6.1.0-505 6.1.0-608	Firmware image to use (SV-4K, DMP-2K)	DMP-Series2-7.0.92.bsfw DMP-Series2-7.0.92.2.bsfw* (optional)
6.1.0-363 6.1.0-486 6.1.0-505 6.1.0-608	init.version (SV-4K, DMP-2K)	7.0.92 7.0.92.2* (optional)
6.1.0-363 6.1.0-486 6.1.0-505 6.1.0-608	Base firmware image to use (SV-4K, DMP-2K)	If a prerequisite firmware is not already installed, upload and select the 5.1.68.1 firmware file. Note: Contact your Cisco Systems representative for information about how to obtain the 5.1.68.1 firmware.
6.1.0-363 6.1.0-486 6.1.0-505 6.1.0-608	base.version (SV-4K, DMP-2K)	5.1.68.1

* when using encrypted channels.

Firmware Download for all Media Players

The media player firmware image is not bundled with the Cisco Vision Dynamic Signage Director software.

Note: Be sure to download the firmware to a device that you can also use to access the Cisco Vision Dynamic Signage Director software.

Downloading the Production Firmware for all Media Players

To download the production firmware for all DMPs, go to:

<https://www.brightsign.biz/downloads/dmp-firmware-download-6083-0516>

Downloading the SV-4K and DMP-2K Base Firmware

If you do not already have the required base firmware version uploaded to Cisco Vision Dynamic Signage Director for the SV-4K and DMP-2K media players, you must download the firmware image separately from a password-protected site and then upload it to Cisco Vision Dynamic Signage Director.

Contact your Cisco Systems representative for the “How to Download SV-4K Firmware” document, available to qualified Cisco Vision partners.

Resolved Defects in Release 6.1.0-608

Table 7 Resolved Defects in Release 6.1.0-608

Resolved Defect Number	Description of Original Defect
CSCvo80403	After upgrade from Release 6.0 to Release 6.1, possible issue with loading contents in Asset Library.

Resolved Defects in Release 6.1.0-505

Table 8 Resolved Defects in Release 6.1.0-505

Resolved Defect Number	Description of Original Defect
CSCvn31783	Content migration fails if asset size is larger than 2 GB.
CSCvm98084	Unable to schedule a script state in Scheduler when script state name contains special characters.
CSCvn13345	When changing password, some passwords are unexpectedly rejected.
CSCvn13333	When “admin” user is forced to change password, changing “admin” password in TUI continues to prompt user to change password during login in the web UI.
CSCvn21791	When user with Content Manager role logs in, the Control Panel does not completely start.
CSCvn33048	When user with Event or Venue Operator role logs in, the Control Panel does not completely start.
CSCvp02424	DMP firmware 7.0.92 takes ~5 seconds to tune into a CBC-encrypted multicast video stream. Use firmware 7.0.92.2.

Open Defects in Release 6.1.0-505

This section describes newly-found defects in Release 6.1.0-505. All defects that are open in prior Cisco Vision Dynamic Signage Director Release 6.1 releases and not listed as resolved remain open in Cisco Vision Dynamic Signage Director Release 6.1.0-505.

CSCvm97491-L10n: Software Manager “Upgrade” and “Language Packs” tabs non-functional when language pack used.

Symptom When using Software Manager, Upgrade and Language Packs tabs don't functional when using a language pack.

Workaround Set the browser to use English.

Resolved Defects in Release 6.1.0-486

Table 9 Resolved Defects in Release 6.1.0-486

Resolved Defect Number	Description of Original Defect
CSCvm91469	Device Management and Script Control UI use over time may cause server to become non-responsive.
CSCvm89794	Transition from Timer based state to Manual does not work as expected.
CSCvm75140	Active state timer change from Manual to Timer shows extra 24 hours depending on time of day.
CSCvm47786	Content Migration from 6.0 SP1 to 6.1 fails if data has any unsupported content type.
CSCvk61186	Login page password change accepts passwords that are not valid according to the new rules.
CSCvm59625	Unable to change channel on DMP using IR remote and Device Management when web content is displayed on screen.
CSCvm61037	During video playlist using Device Management to change to HTML page URL channel, screen will go blank after a time.
CSCvm55351	When server is in a Non-US time zone, some script control functions do not work properly.
CSCvm66218	Unable to start script when script name contains one or more of "&", "<", ">" characters.
CSCvk40700	Under some circumstances, DMPs may not reboot at the scheduled time.
CSCvk68298	Rebooted DMPs rejoin to HTML default URL instead of running script state.
CSCve84660	When DMP is in portrait mode, the Channel Banner is cut off.
CSCvm22275	DMP encoded stream latency increased starting with firmware 6.2.x.
CSCvk76343	Certain non full-screen external HTML pages get squeezed when displaying on TV screen.
CSCvm91530	When a language pack is used, the Playlist List View and Thumb View are displayed in same page in the Asset Manager page.
CSCvm53339	Video region changes size when user goes to an URL as channel, then back to multicast video channel.
CSCvm69344	When script is running, a channel change using IR remote may not persist, with content on screen reverting to script state content.
CSCvm77507	Force deletion of template used by a script results in corrupted script that can't be saved.

Table 9 Resolved Defects in Release 6.1.0-486

Resolved Defect Number	Description of Original Defect
CSCvm54853	Designer doesn't notify user if template region(s) are modified and saved and the template is used by scripts.
CSCvm62658	When editing a template used by one or more scripts, the list of affected scripts in the notification is incomplete.
CSCvm72341	URL channel won't span displays when a set of TVs are on video wall (IR and CCM only).
CSCvk63786	In some circumstances user is unable to save changes made to a user account.
CSCvm54867	In a template when placing a non-video region on top and number of regions is more than 2, then the Channel Banner will show behind that region.
CSCvm62615	User is not asked to force the change when deleting a template region and the template is used by a script.
CSCvk63786	In some circumstances user is unable to save changes made to a user account.
CSCvk61188	TUI does not accept passwords that are valid according to the new password rules.

Open Defects in Release 6.1.0-486

This section describes newly-found defects in Release 6.1.0-486. All defects that are open in prior Cisco Vision Dynamic Signage Director Release 6.1 releases and not listed as resolved remain open in Cisco Vision Dynamic Signage Director Release 6.1.0-486.

CSCvm98084–Script event is not saved in Scheduler when state is added having special characters.

Symptom When any script state has special characters "[", "]", "_", ".", "@", "!", ",", only script event is saved in Scheduler.

Workaround Remove any special characters from the state name.

CSCvm57730–If binded data source is deleted from system, the widget binding becomes orphaned and breaks data feed.

Symptom If a datasource being used by a widget is deleted, the widget's data feed no longer works since the feed to get the data is now missing.

Workaround In the Widget Designer select new data binding for the components that was using the now deleted data source and save the widget.

CSCvk66106–Playlist with a combination of video with external http URL freezes/blacks out.

Symptom Playlist with a combination of videos and external URLs freezes and/or blacks out on the TV screen.

Workaround Restart the DMP runtime to recover from DMP black out/freeze.

Resolved Defects in Cisco Vision Dynamic Signage Director Release 6.1.0-363

The following lists the resolved defects.

Table 10 Resolved Defects in Cisco Vision Dynamic Signage Director Release 6.1.0-363

Resolved Defect Number	Description of Original Defect
CSCvj94786	Script gets corrupted when making changes to template and perform save on script in which template was used.
CSCvh14664	Luma-key checkbox can never be set in the new Designer UI.
CSCvk18011	Video URL channel does not show in full screen when exiting from Channel Guide using IR remote.
CSCvj95637	Session timeout does not occur while keeping the Management Dashboard and Control Panel screen idle for a long time.
CSCvh69415	Auto-log out is not working when session idle for a long time.
CSCvh17550	Asset's Duration & Runtime value does not update while copying playlist when default runtime value set.
CSCvg74246	Playlist: In Playlist, Save and Cancel button is hidden while changing screen resolution.
CSCvj79532	Reconfiguring an external URL-type channel into video stream channel causes black screen.
CSCvi97888	Input and output triggers get exception when user attempts to reset them.
CSCvi82549	In Widget Designer, widget dimensions are not editable after first save.
CSCvi44696	RTP channel re-saved as UDP while editing and saving.
CSCvi43102	When External URL image as default channel and video/UDP channel is played as script, there is overlap.
CSCvi34202	DMP runtime is very chatty, resulting in difficulty in using DWS log for debugging.
CSCvi30637	Device Management tab does not load when suite is created with numbers.
CSCvh76683	Uploaded video has 0 duration: dragging & dropping it to playlist shows its duration as NaN.
CSCvh76658	After copying a playlist, auto scroll and playlist do not highlight in playlists.
CSCvh32670	On content validity, end times should not be inclusive.
CSCvg99699	Addition/deletion zone/suite do not update in CCM when select "refresh tree data" icon.
CSCvg87700	During live update, re-positioning video in playlist currently playing on TV screen freezes.

Related Documentation and Resources

This document is to be used in conjunction with the documents listed in this section.

Cisco Vision Dynamic Signage Director Documentation Go URL

For more information about Cisco Vision Dynamic Signage Director hardware and software installation, configuration, and operation, see the documentation available on Cisco.com at:

www.cisco.com/go/stadiumvisiondocs

Cisco Vision Dynamic Signage Director Documentation Summary

The following documents are included in the content library for Cisco Vision Dynamic Signage Director Release 6.1:

Related Documentation and Resources

Install and Upgrade Guides

[Cisco Vision Software Installation and Upgrade Guide: Dynamic Signage Director Release 6.1](#)

Design and Deployment

[Release 6.0: Cisco Vision Deployment Guide for Series 2 and Series 3 Media Players: Dynamic Signage Director](#)

[Cisco Vision Dynamic Signage Solution Operation and Network Requirements \(authorized partners only\)](#)

[Cisco Connected Stadium WiFi Design Guide \(authorized partners only\)](#)

[Cisco Vision Video Headend Design and Implementation Guide \(authorized partners only\)](#)

Localization

[Cisco StadiumVision Director Localization Guide](#)

Server Administration

[Release 6.1: Cisco Vision Administration Guide: Dynamic Signage Director](#)

Content Management

[Release 6.1: Cisco Vision Content Planning and Specifications Guide: Dynamic Signage Director](#)

[Release 6.0: Cisco Vision Director Data Integration Guide](#)

Event Operations

[Cisco StadiumVision Director Operations Playbook](#)

[Release 6.1: Cisco Vision Dynamic Signage Director Operations Guide](#)

Task Notes

[DMPs: Configure Reboot DMP System Task](#)

[DMPs: Enable Touch Screen Control](#)

[DMPs: Find the Serial Number for a DMP From the Management Dashboard](#)

[DMPs: Deploy WiFi Network Connectivity on the SV-4K](#)

[DMPs: UI: Access Cisco Vision Director](#)

[PoP: Configure Automatic Proof of Play Export](#)

Licensing Information

[Open Source Used In Cisco Vision Director Release 6.1](#)

Cisco Vision Dynamic Signage Director Documentation Notifications

You can receive periodic emails that summarize new and changed information in Cisco Vision Dynamic Signage Director documentation by subscribing to the sv-doc-notify@external.cisco.com email alias.

Contact us at stadiumvisiondocs@external.cisco.com to request this notification service.

Cisco Vision Dynamic Signage Director Documentation Team Email Contact Information

You can submit questions, suggestions, or other feedback to us at stadiumvisiondocs@external.cisco.com.

Obtaining Cisco Product Documentation

For information on obtaining other Cisco Product documentation, see the monthly *What's New in Cisco Product Documentation*, which also lists all new and revised Cisco technical documentation, at:

<http://www.cisco.com/en/US/docs/general/whatsnew/whatsnew.html>

Subscribe to the *What's New in Cisco Product Documentation* as a Really Simple Syndication (RSS) feed and set content to be delivered directly to your desktop using a reader application. The RSS feeds are a free service and Cisco currently supports RSS Version 2.0.

Service and Support for Cisco Vision Dynamic Signage Director

Cisco Solution Support is the required technical support service for the Cisco Vision solution (including Cisco Vision Dynamic Signage Director).

Cisco Solution Support for Cisco Vision combines Cisco product support—Cisco Smart Net Total Care Service or software services—with solution-level support into one service. By taking a solution-level approach, Cisco is responsible for managing product support teams to resolve any issue, no matter where it resides.

For this service, simply purchase Cisco Solution Support for each Cisco hardware or software product in Cisco Vision.

Note: Cisco Solution Support is required for Cisco software in the Cisco Vision solution. Although it is optional for Cisco hardware in this solution, each Cisco component must be covered to take advantage of Cisco Solution Support. Product support for solution partner products within Cisco Vision is also required. Contact these vendors for details and requirements.

Solution Support References

- For a high-level introduction to this service for Cisco StadiumVision, see the [Cisco Solution Support for StadiumVision At-A-Glance](#) document.
- For technical details and product coverage, including the support workflow, see the [“Cisco Solution Support for StadiumVision Service Definition.”](#)

Find more details about [Cisco Solution Support on cisco.com](#) or contact your Cisco sales representative.

RMA Process for the Digital Media Players

The Return Materials Authorization (RMA) process for the digital media player is covered by the Solution Support Service for Cisco Vision.

Before you place a service call, see the troubleshooting information in the [Release 6.1: Cisco Vision Deployment Guide for Series 2 and Series 3 Media Players: Dynamic Signage Director](#). If you cannot resolve the problem with any of the recommended troubleshooting steps, open a Cisco Solution Support case to further troubleshoot and coordinate the return process with the vendor.

Cisco and the Cisco logo are trademarks or registered trademarks of Cisco and/or its affiliates in the U.S. and other countries. To view a list of Cisco trademarks, go to this URL: www.cisco.com/go/trademarks. Third-party trademarks mentioned are the property of their respective owners. The use of the word partner does not imply a partnership relationship between Cisco and any other company. (1110R)

Google, Google Play, Android and certain other marks are trademarks of Google Inc.

The terms HDMI and HDMI High-Definition Multimedia Interface, and the HDMI Logo are trademarks or registered trademarks of HDMI Licensing LLC in the United States and other countries.

© 2019 Cisco Systems, Inc. All rights reserved.