

Using Cisco Business Mobile App with CBW150 Series

Objective

The objective of this document is to show you how to use the Cisco Business Mobile app with the Cisco Business 150 series access points.

Applicable Software | Version

- Cisco Business Mobile App | 1.2 ([Download on the Apple App Store](#))([Get it on Google Play](#))
- CBW150AX | 10.2.2.0
- CBW151AXM | 10.2.2.0

Introduction

The Cisco Business Mobile app enables customers to deploy and manage supported Cisco Business devices. The mobile app is intended to help customers set up their switches and wireless networks and to manage their infrastructure from a single point of setup.

CBW 15x series devices are not compatible with CBW 14x/240 series devices and coexistence on the same LAN is not supported.

Some terms to be familiar with regarding the Cisco Business Mobile app:

- Greenfield Network - A new network which is yet to be configured
- Brownfield Network - An existing network which is already configured
- Day 0 - initial configuration
- Day 2 - changing or updating existing configuration

Currently, the Mobile app will only support Greenfield network deployments. Devices with existing configurations will not be discovered or managed.

If you are ready to configure using the Mobile app, let's get you setup!

System Requirements

The CBW150AX and CBW151AXM are supported by the Cisco Business Mobile App 1.2.

Table of Contents

- [Configuration of Cisco Business Mobile app](#)
- [Add A Site](#)
- [Site Configuration](#)
- [Add Devices](#)

Configuration of Cisco Business Mobile app

Add A Site

Step 1

Download the Cisco Business Mobile app from the App Store on your Apple device (iPhone or iPad).

The app is optimized for display on an iPhone. If you use an iPad, you will see black bars on the side of the app as the aspect ratio of an iPad is different.

Step 2

Click on the Cisco Business Mobile app.



Step 3

To create a location of your network, click on **+ Add Site**.

All Sites

+ Add Site



Create Your First Site

A site is a physical location you are going to deploy your network in. You can see all your sites here.



Step 4

Click on **Get Started**.

< All Sites

Add Site



Add Site

Name and physically locate the site that will contain the devices you are about to configure.

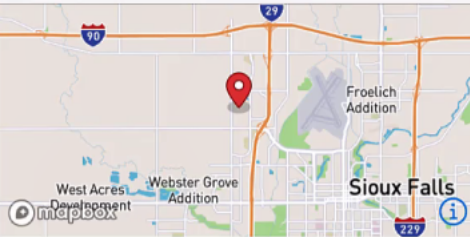
Get Started

Don't show this to me again

Step 5

Configure the name of your site, address, Country, and click **Next**.

[← Add Site](#) **Add Site**



What do you want to name your site? **1**

Lab

Ex: San Jose or Central Station

What is the full address? **2**

N Vincent Ave, Sioux Falls, SD, United States

Ex: 123 Main St, Newark, NJ 02341

Country **3**

United States ▼

4

Next

Step 6

Enter a *Username* and *Password* for the site and click **Next**.

[← Add Site](#) **Add Site**

Site Credentials

Create a username and password for this site.
These credentials will be used to access all devices added to this site

Username

admin **1**

Password

Enter password **2**

Confirm Password

Enter password again **3**

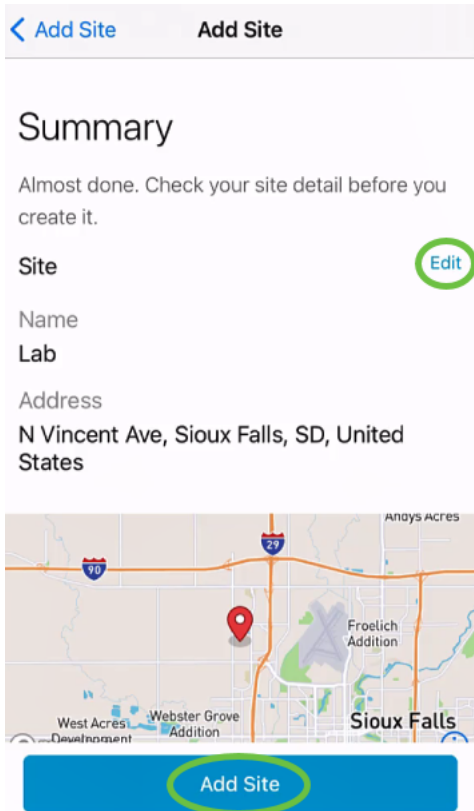
4

Next

The credentials will be used to access the devices at this site.

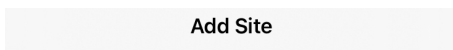
Step 7

You will see the *Summary* screen. To make any changes, click *Edit*. If you are all set, click **Add Site**.



Step 8

Click **Done**.



Done! The site "Lab" has been created

You will be able to use this site to manage your network, all networking hardware and guest devices.

Here's what you should do Next?

[Configure the Network for this Site](#)



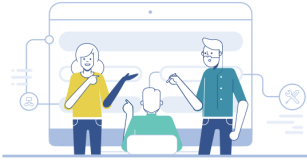
Site Configuration

To configure the site, follow the steps:

Step 1

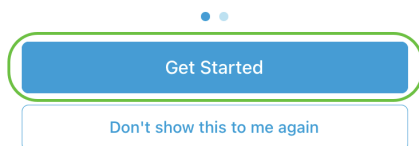
Click on **Get Started**.

[< Add Site](#) Site Configuration



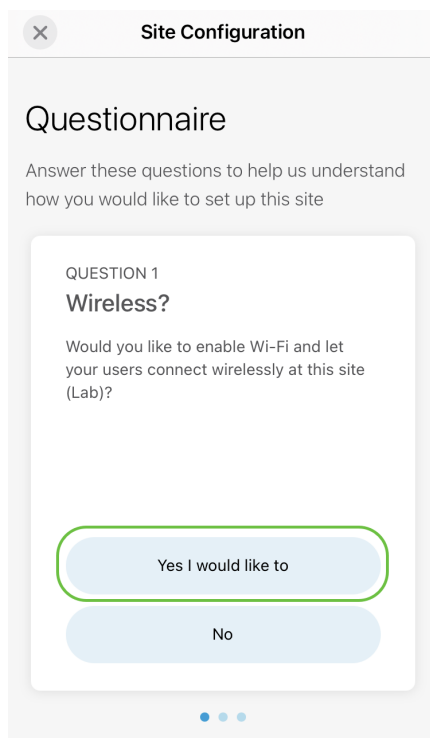
Tell us about your Site

Answer some questions about your preferences on how you would like to configure your site - Segmentation, Wireless preferences, advanced configuration etc.



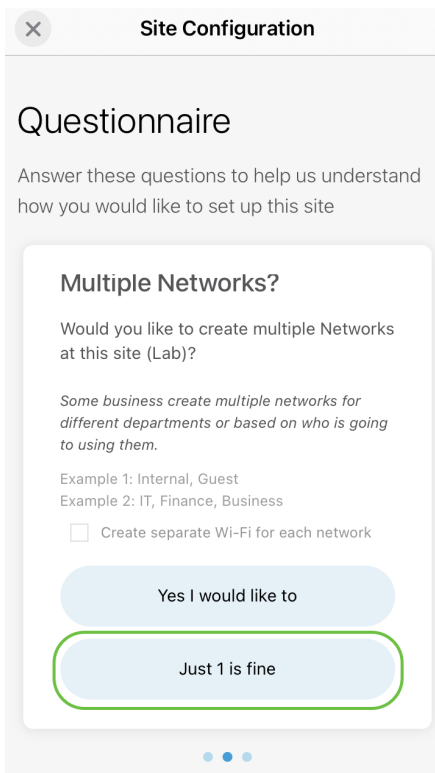
Step 2

Choose an option to configure the wireless settings in your network. In this example, **Yes I would like to** is selected.



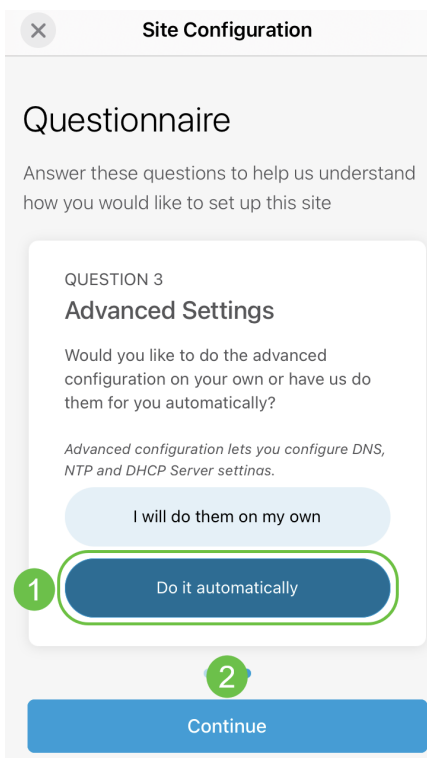
Step 3

If you have multiple networks, you have the option to configure them. In this example, **Just 1 is fine** is selected.



Step 4

You can either configure the *Advanced Settings* manually or automatically. In this example, **Do it automatically** is selected. Click **Continue**.



Step 5

Enter a *Network Name* and click **Next**.

Networks

Name the network at Lab. You can also add multiple networks if you like

+ Add a network

▼ Lab

Network Name

Lab 1

Network ID

1

2

Next

If you want to add more networks, click + Add a network.

Step 6

Enter a *Password* for your network and click **Next**.

▼ Lab

WiFi Network Name

Lab

Associated Wired Network Name

Lab ▼

Radio Frequency

2.4 GHz 5 GHz

Type

Employee

Authentication

WPA2 Personal ▼

Password 1

Re-enter Password 2

3

Next

Step 7

Click **Next** to proceed.

Wireless

Choose the Management WiFi Network at Lab.

We need to know which WiFi Network you would like us to use to perform maintenance actions and network configuration changes.

Management WiFi
Lab

The Management Wi-Fi is usually the one which is the most secure and is only used by known users within your organization. (Can only be Employee type with network ID 1 and the authentication cannot be Open)

Next

Step 8

Check the details in the *Summary* screen. Click on **Confirm Site Configurations** button to complete the set up.

Summary

Almost done. Check your Site detail before you create it.

Network Segmentation [Edit](#)

NETWORK 1

Network Name Lab

Network ID 1

Wireless [Edit](#)

WIRELESS 1 M

SSID Lab

2.4 GHz enable

5 GHz enable

Guest Network No

Confirm Site Configurations

Step 9

Click **Done**.



Done! The site configurations for "Lab" has been created

You can edit your configurations later if needed from the sites homepage

Here's what you should do Next?

[Add Devices to this Site](#)

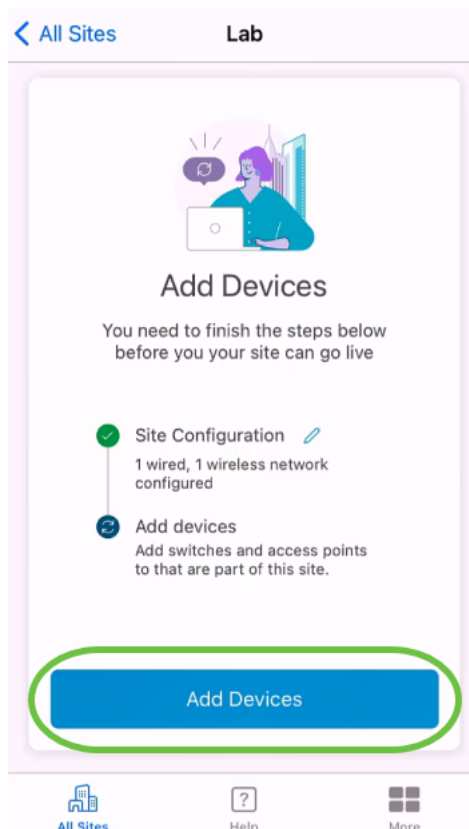
Done

Add Devices

To add devices, follow these steps:

Step 1

Click on **Add Devices**.

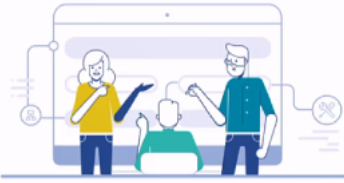


Step 2

Click on **Get Started**.

< Lab

Add Devices



Connect your devices

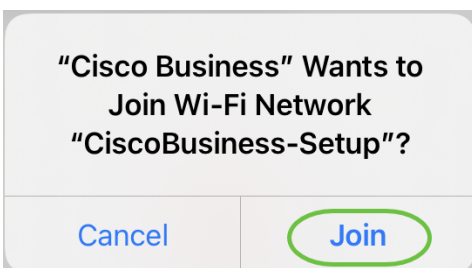
Before we proceed, please make sure that all the devices you want to add to Lab have been plugged in.

Get Started

Don't show this to me again

Step 3

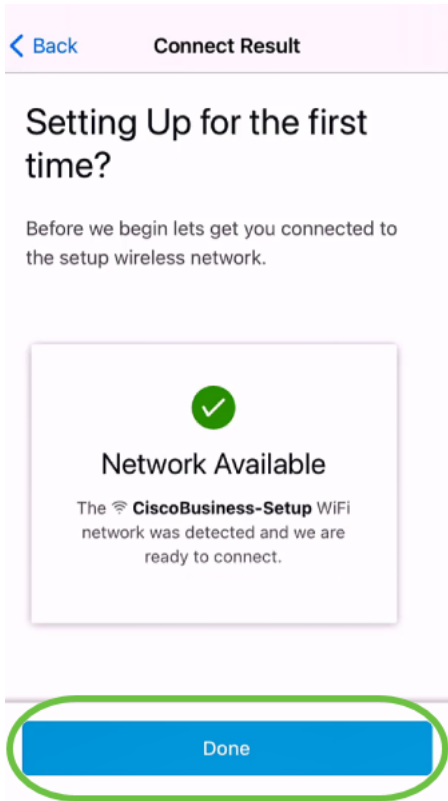
Click **Join** to join the default *CiscoBusiness-Setup* SSID.



Make sure that the wireless access point is fully booted up and is in factory default settings.

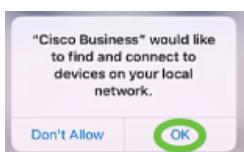
Step 4

Click **Done** after the connection is detected.



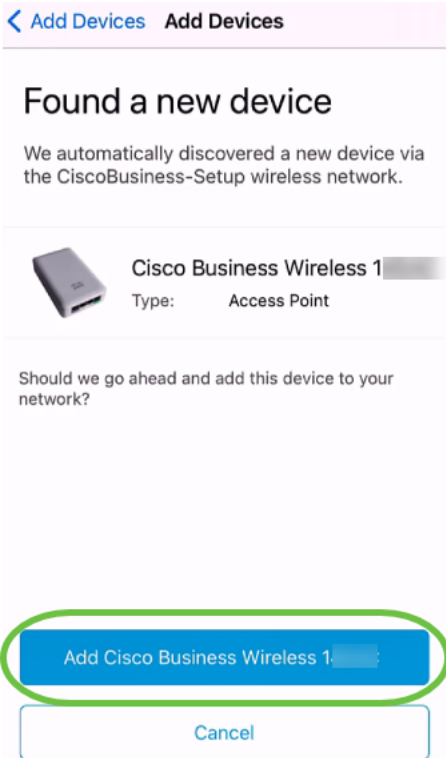
Step 5

Click **OK** to allow Cisco Business network to find and connect to Cisco Business devices.



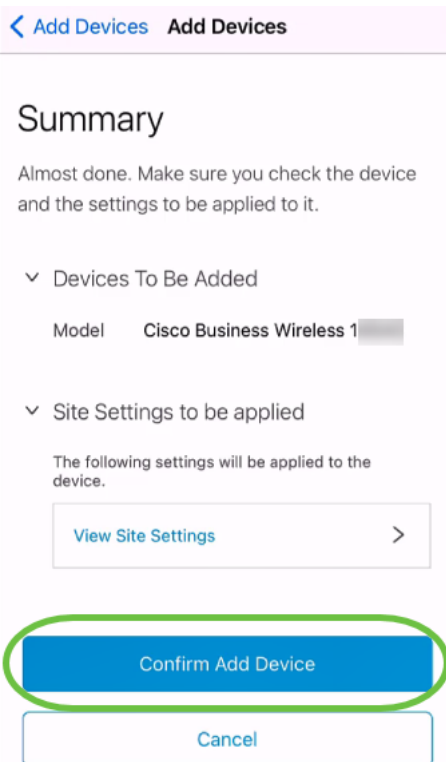
Step 6

The access point will be detected. In this example, it is a Cisco Business Wireless access point. Click **Add Cisco Business Wireless** .



Step 7

A Summary of the device and settings will be displayed. Click **Confirm Add Device**.




A screen will appear displaying the progress of adding the device.

Adding Device

Adding Device

About 9 minutes remaining

Cisco Business Wireless 1 

Type: Access Point



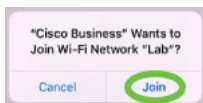
 Initializing device... 3%



Adding device. Do not quit or minimize the app till it's done

Step 8

Click **Join** to allow the access point to join the network you created.




Step 9


You will see a screen that the device was successfully deployed. You can choose to *Add more devices* or click *Done*. In this example, **Done** is selected.

✕ Adding Device

Device deployed



Cisco Business Wireless 150
Type: Access Point
Serial No: FC...F



Cisco Business Wireless 150 has been successfully setup is broadcasting WiFi network.

The access point is now live and added to Lab.
We can now use it to add and discover other devices to your network.


Add more devices

Done

Step 10

Click **Done** to navigate to the main page.

Add Devices



Done! Your Device has been Deployed.

AP6C71.0D54.064C has been added to your Lab site.

What's Next?

[Add other Devices](#)

Done

Conclusion

There you have it! You have now successfully used the Cisco Business Mobile App to deploy the CBW 150 series access point. Now you can manage your network with ease.

Now you know where to go for more information or to give feedback!

Looking for more articles on the Cisco Business Mobile application? Look no further!
Click any of the tags below to be brought directly to that topic. Enjoy!

[Overview](#) [Troubleshooting](#) [Device Management](#) [Help Page](#) [Upgrade Firmware](#) [Reboot a Device](#) [Debug Logs](#)