

Configure ASA: SSL Digital Certificate Installation and Renewal

Contents

[Introduction](#)

[Background Information](#)

[Prerequisites](#)

[Requirements](#)

[Components Used](#)

[Configure](#)

[CSR Generation](#)

[1. Configure with the ASDM](#)

[2. Configure with the ASACLI](#)

[3. Use OpenSSL to Generate the CSR](#)

[SSL Certificate Generation on the CA](#)

[Example of SSL Certificate Generation on GoDaddy CA](#)

[SSL Certificate Installation on the ASA](#)

[1.1 Installation of the Identity Certificate in PEM Format with ASDM](#)

[1.2. Installation of a PEM Certificate with the CLI](#)

[2.1 Installation of a PKCS12 Certificate with ASDM](#)

[2.2 Installation of a PKCS12 Certificate with the CLI](#)

[Verify](#)

[View Installed Certificates via ASDM](#)

[View Installed Certificates via the CLI](#)

[Verify Installed Certificate for WebVPN with a Web Browser](#)

[Renew SSL Certificate on the ASA](#)

[Frequently Asked Questions](#)

[1. What is the best way to transfer identity certificates out of one ASA onto a different ASA?](#)

[2. How to generate SSL certificates for use with VPN Load Balancing ASAs?](#)

[3. Do the certificates need to be copied from the Primary ASA to the Secondary ASA in an ASA failover pair?](#)

[4. If ECDSA keys are used, is the SSL certificate generation process different?](#)

[Troubleshoot](#)

[Troubleshoot Commands](#)

[Common Issues](#)

[Appendix](#)

[Appendix A: ECDSA or RSA](#)

[Appendix B: Use OpenSSL to Generate a PKCS12 Certificate from an Identity Certificate, CA Certificate, and Private Key](#)

[Related Information](#)

Introduction

This document describes installation of third-party trusted SSL digital certificate on the ASA for Clientless SSLVPN and AnyConnect connections.

Background Information

A GoDaddy Certificate is used in this example. Each step contains the Adaptive Security Device Manager

(ASDM) procedure and the CLI equivalent.

Prerequisites

Requirements

This document requires access to a trusted third-party Certificate Authority (CA) for certificate enrollment. Examples of third-party CA vendors include, but are not limited to, Baltimore, Cisco, Entrust, Geotrust, G, Microsoft, RSA, Thawte, and VeriSign.

Before you start, verify that the ASA has the correct clock time, date, and time zone. With certificate authentication, it is recommended to use a Network Time Protocol (NTP) server to synchronize the time on the ASA. The [Cisco ASA Series General Operations CLI Configuration Guide, 9.1](#) details the steps to take in order to set up the time and date correctly on the ASA.

Components Used

This document uses an ASA 5500-X that runs software version 9.4.1 and ASDM version 7.4(1).

The information in this document was created from the devices in a specific lab environment. All of the devices used in this document started with a cleared (default) configuration. If your network is live, ensure that you understand the potential impact of any command.

Configure

The SSL protocol mandates that the SSL Server provide the client with a server certificate for the client to perform server authentication. Cisco does not recommend use of a self-signed certificate because of the possibility that a user could inadvertently configure a browser to trust a certificate from a rogue server. There is also the inconvenience to users to have to respond to a security warning when it connects to the secure gateway. It is recommended to use trusted third-party CAs to issue SSL certificates to the ASA for this purpose.

The lifecycle of a third-party certificate on the ASA essentially takes place with these steps:



CSR Generation

CSR generation is the first step in the lifecycle of any X.509 digital certificate.

Once the private/public Rivest-Shamir-Adleman (RSA) or Elliptic Curve Digital Signature Algorithm (ECDSA) keypair is generated ([Appendix A](#) details the difference between the use of RSA or ECDSA), a Certificate Signing Request (CSR) is created.

A CSR is a PKCS10 formatted message that contains the public key and identity information of the host which sends the request. [PKI Data Formats](#) explains the different certificate formats applicable to the ASA and Cisco IOS®.

Notes:

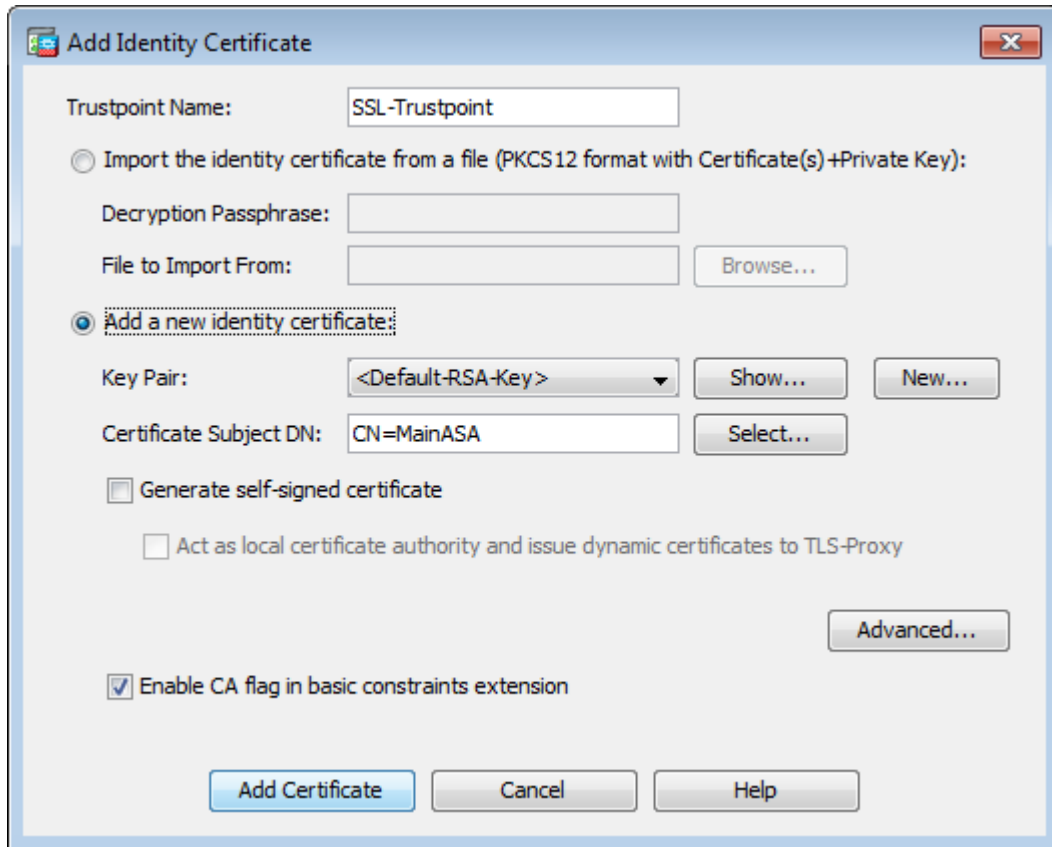
1. Check with the CA on the required keypair size. The CA/Browser Forum has mandated that all certificates generated by their member CAs have a minimum size of 2048 bits.
 2. ASA currently does not support 4096 bit keys (Cisco bug ID [CSCut53512](#)) for SSL server authentication. However, IKEv2 does support the use of 4096 bit server certificates on the ASA 5580, 5585, and 5500-X platforms alone.
 3. Use the DNS Name of the ASA in the FQDN field of the CSR in order to prevent Untrusted Certificate warnings and pass Strict Certificate check.
-

There are three methods to generate CSR.

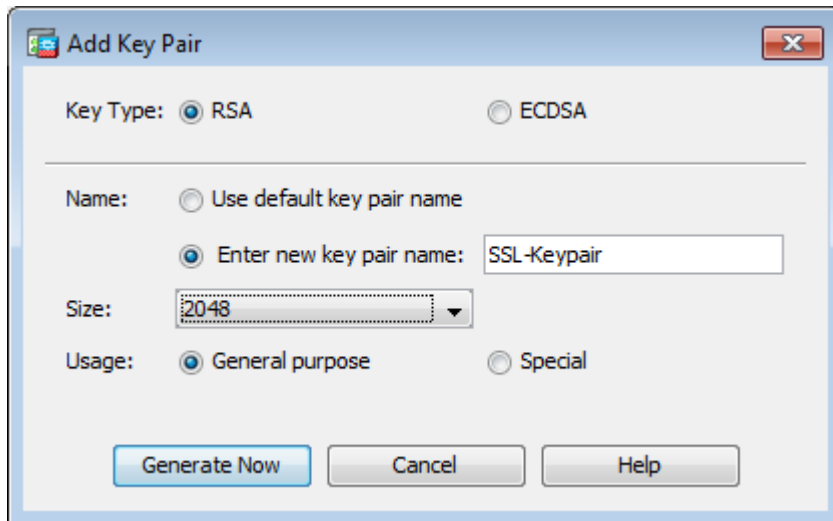
- Configure with ASDM
- Configure with the ASA CLI
- Use OpenSSL to Generate the CSR

1. Configure with the ASDM

1. Navigate to **Configuration > Remote Access VPN > Certificate Management**, and choose **Identity Certificates**.
2. Click **Add**.



3. Define a trustpoint name in the Trustpoint Name input field.
4. Click the **Add a new identity certificate** radio button.
5. For the Key Pair, click **New**.



6. Choose the Key Type - RSA or ECDSA. (Refer to [Appendix A](#) to understand the differences.)
7. Click the **Enter new key pair name** radio button. Identify the key pair name for recognition purposes.
8. Choose the **Key Size**. Choose **General Purpose for Usage** with RSA.
9. Click **Generate Now**. The key pair are created.
10. To define the Certificate Subject DN, click **Select**, and configure the attributes listed in this table:

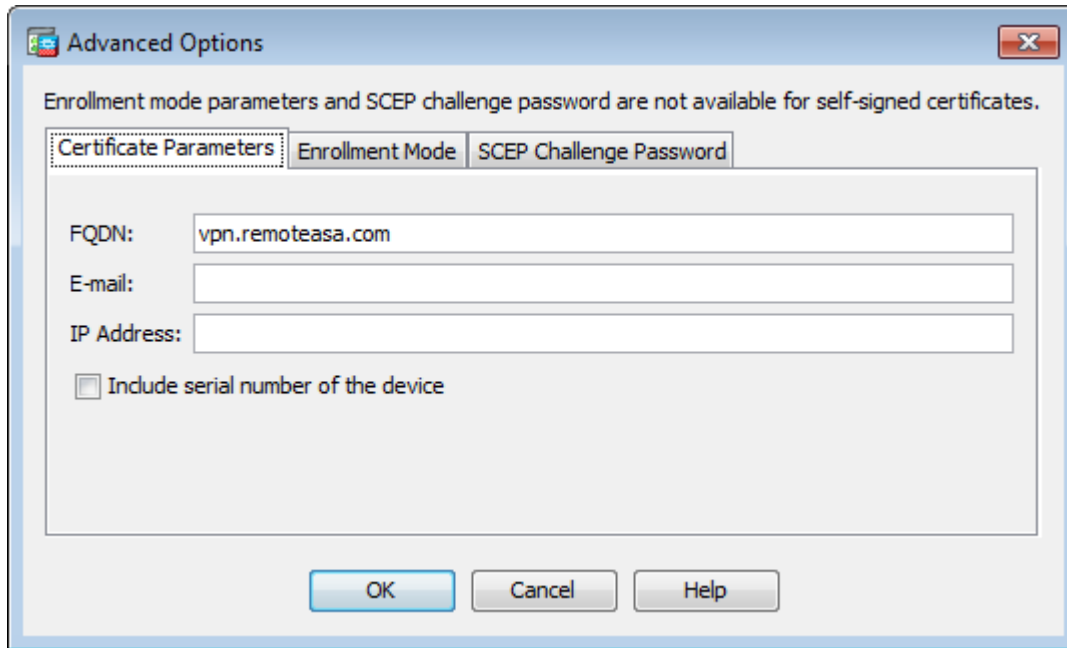
Attribute	Description
CN	FQDN (Full Qualified Domain Name) that will be used for connections to your firewall. For example, webvpn.cisco.com
OU	Department Name
O	Company Name (Avoid using Special Characters)
C	Country Code (2 Letter Code without Punctuation)
St	State (Must be spelled out completely. For example, North Carolina)
L	City
EA	Email Address

To configure these values, choose a value from the **Attribute** drop-down list, enter the value, and click **Add**.

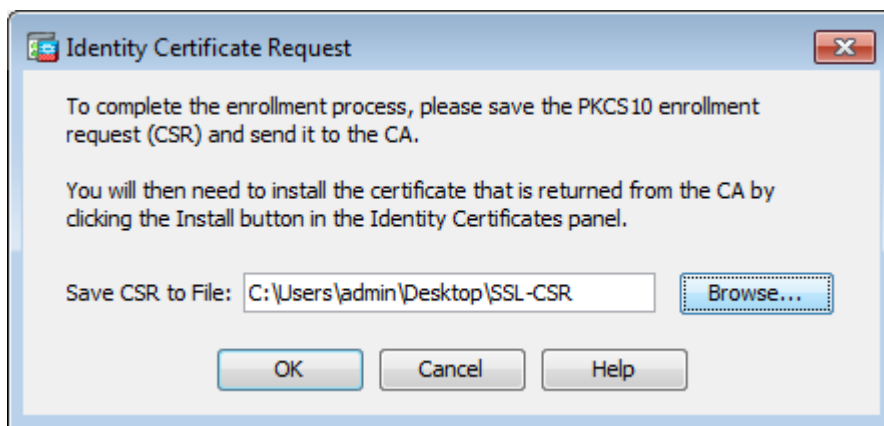
Attribute	Value
Common Name (CN)	vpn.remoteasa.com
Company Name (O)	Company Inc
Country (C)	US
State (St)	California
Location (L)	San Jose

Note: Some third-party vendors require particular attributes to be included before an identity certificate is issued. If unsure of the required attributes, check with the vendor for details.

11. After the appropriate values are added, click **OK**. The Add Identity Certificate dialog box appears with the CertificateSubject DN field populated.
12. Click **Advanced**.



13. In the **FQDN** field, enter the FQDN that is used to access the device from the Internet. Click **OK**.
14. Leave the **Enable CA** flag in basic constraints extension option checked. Certificates without the CA flag now cannot be installed on the ASA as CA certificates by default. The basic constraints extension identifies whether the subject of the certificate is a CA and the maximum depth of valid certification paths that include this certificate. Un-check the option to bypass this requirement.
15. Click **OK**, and then click **Add Certificate**. A prompt displays in order to save the CSR to a file on the local machine.



16. Click **Browse**, choose a location in which to save the CSR, and save the file with the .txt extension.

Note: When the file is saved with a .txt extension, the PKCS#10 request can be opened and viewed with a text editor (such as Notepad).

2. Configure with the ASA CLI

In the ASDM, the trustpoint is automatically created when a CSR is generated or when the CA certificate is installed. In the CLI, the trustpoint must be created manually.

<#root>

! Generates 2048 bit RSA key pair with label SSL-Keypair.

MainASA(config)#

```
crypto key generate rsa label SSL-Keypair modulus 2048
```

INFO: The name for the keys are: SSL-Keypair
Keypair generation process begin. Please wait...

! Define trustpoint with attributes to be used on the SSL certificate

MainASA(config)#

```
crypto ca trustpoint SSL-Trustpoint
```

MainASA(config-ca-trustpoint)#

```
enrollment terminal
```

MainASA(config-ca-trustpoint)#

```
fqdn (remoteasavpn.url)
```

MainASA(config-ca-trustpoint)#

```
subject-name CN=(asa.remotevpn.url),O=Company Inc,C=US,  
St=California,L=San Jose
```

MainASA(config-ca-trustpoint)#

```
keypair SSL-Keypair
```

MainASA(config-ca-trustpoint)#

```
exit
```

! Initiates certificate signing request. This is the request to be submitted via Web or Email to the third party vendor.

MainASA(config)#

```
crypto ca enroll SSL-Trustpoint
```

WARNING: The certificate enrollment is configured with an fqdn that differs from the system fqdn. If this certificate is used for VPN authentication this may cause connection problems.

Would you like to continue with this enrollment? [yes/no]:

yes

% Start certificate enrollment ..

% The subject name in the certificate is: subject-name CN=

(remoteasavpn.url)

,

O=Company Inc,C=US,St=California,L=San Jose

% The fully-qualified domain name in the certificate will be:

(remoteasavpn.url)

,

% Include the device serial number in the subject name? [yes/no]:

no

Display Certificate Request to terminal? [yes/no]:

yes

Certificate Request:

```
-----BEGIN CERTIFICATE REQUEST-----
MIIDDjCCAfYCAQAwwYKxETAPBgNVBACTCFNhbiBkb3NlMRMwEQYDVQIQIEwpcDYWxp
Zm9ybmlhMQswCQYDVQQGEwJVUzEUMBIGA1UEChMLQ29tcGFueSBjbmMxGjAYBgNV
BAMTEXZwbi5yZW1vdGVhc2EuY29tMSAwHgYJKoZIhvcNAQkCFhF2cG4ucmVtb3Rl
YXNhLmNvbTCCASIWdQYJKoZIhvcNAQEBBQADggEPADCCAQoCggEBAK62Nhb9ktlK
uR3Q4TmksyuRMqJNrb9kXpvA6H200PuBfQvSF4rVnSwK0mu3c8nweEvYcdVWV6Bz
BhjXeovTVi17F1NTceaUTGikeIdXC+mw1iE7eRsynS/d4mzMWJmrvrsDNzpAW/EM
SzTca+BvqF7X2r3LU8Vsv60i8ylhco9Fz7bWvRWVt03NDDbyo1C9b/VgXMuBitcc
rzfUbVnm7VZD0f4jr9EXgUwXxcQidWEABlFrXrtYpFgBo9aqJmRp2YABQ1ieP4cY
3rBtgRjLcF+S9TvhG5m4v7v755meV4YqsZIXvYtI0zVBihemVxaGA1oDwfkoYSFi
4CzXbFvdG6kCAwEAaA/MD0GCSqGSiB3DQEJDjEwMC4wDgYDVR0PAQH/BAQDAgWg
MBwGA1UdEQQVMBOCEXZwbi5yZW1vdGVhc2EuY29tMA0GCSqGSiB3DQEBAQA4IB
AQBZuZUXGEB0ix1yuPK0ZkRz8bPnwIqLTfxZhagmuyEhrN7N4+aQnCHj85oJane
4ztZDiCCoWTerBS4RSkKEHEspu9oohjCYuNnp5qa91SPrZNEjTWw0eRn+qKbId2J
jE6Qy4vdPCexavMLYVQxCny+gVgzPN/sFRk3EcTTVq6DxxaebpJijmiqa7gCph52
YkHXnFne1LQd41BgoLLCr9+hx74XsTHGBmI1s/9T5oAX26Ym+B2l/i/DP5BktIUA
8GvIY1/ypj9K049fP5ap8a10qvlTtYyCcCfwrCt+0oj0rZ1YyJb3dFuMNRdAX37t
DuHN12EYNpYkjVk1wI53/5w3
-----END CERTIFICATE REQUEST-----
```

Redisplay enrollment request? [yes/no]:

no

! Displays the PKCS#10 enrollment request to the terminal. Copy this from the terminal to a text file to submit to the third party CA.

3. Use OpenSSL to Generate the CSR

OpenSSL makes use of the **OpenSSL config** file to pull the attributes to be used in the CSR generation. This process results in the generation of a CSR and a Private Key.

Caution: Verify that the **Private key** that is generated is not shared with anyone else as it compromises the integrity of the certificate.

1. Ensure that OpenSSL is installed on the system that this process is run on. For Mac OSX and GNU/Linux users, this is installed by default.
2. Switch to a functional directory.

On Windows: By default, the utilities are installed in C:\Openssl\bin. Open a command prompt in this location.

On Mac OSX/Linux: Open the Terminal window in the directory needed to create the CSR.

3. Create an OpenSSL config file with a text editor with the attributes given . Once done, save the file as **openssl.cnf** in the location mentioned in the previous step (If you version 0.9.8h and later, the file


```
iSopenssl.cfg)
```

```
<#root>
```

```
[req]
```

```
default_bits = 2048
default_keyfile = privatekey.key
distinguished_name = req_distinguished_name
req_extensions = req_ext
```

```
[req_distinguished_name]
```

```
commonName = Common Name (eg, YOUR name)
commonName_default = (asa.remotevpn.url)
```

```
countryName = Country Name (2 letter code)
countryName_default = US
```

```
stateOrProvinceName = State or Province Name (full name)
stateOrProvinceName_default = California
```

```
localityName = Locality Name (eg, city)
localityName_default = San Jose
```

```
0.organizationName = Organization Name (eg, company)
0.organizationName_default = Company Inc
```

```
[req_ext]
```

```
subjectAltName = @alt_names
```

```
[alt_names]
```

```
DNS.1 = *.remotearsa.com
```

4. Generate the CSR and Private Key with this command:

```
openssl req -new -nodes -out CSR.csr -config openssl.cnf
```

```
<#root>
```

```
# Sample CSR Generation:
```

```
openssl req -new -nodes -out CSR.csr -config openssl.cnf
```

```
Generate a 2048 bit RSA private key
```

```
.....+++
```

```
.....+++
```

```
writing new private key to 'privatekey.key'
```

```
-----
```

```
You are about to be asked to enter information that will be incorporated
into your certificate request.
```

```
What you are about to enter is what is called a Distinguished Name or a DN.
```

There are quite a few fields but you can leave some blank
For some fields there will be a default value,
If you enter '.', the field will be left blank.

Common Name (eg, YOUR name) [(asa.remotevpn.url)]:
Country Name (2 letter code) [US]:
State or Province Name (full name) [California]:
Locality Name (eg, city) [San Jose]:
Organization Name (eg, company) [Company Inc]:

Submit the saved CSR to the third-party CA vendor. Once the certificate is issued, the CA provides the identity certificate and the CA certificate to be installed on the ASA.

SSL Certificate Generation on the CA

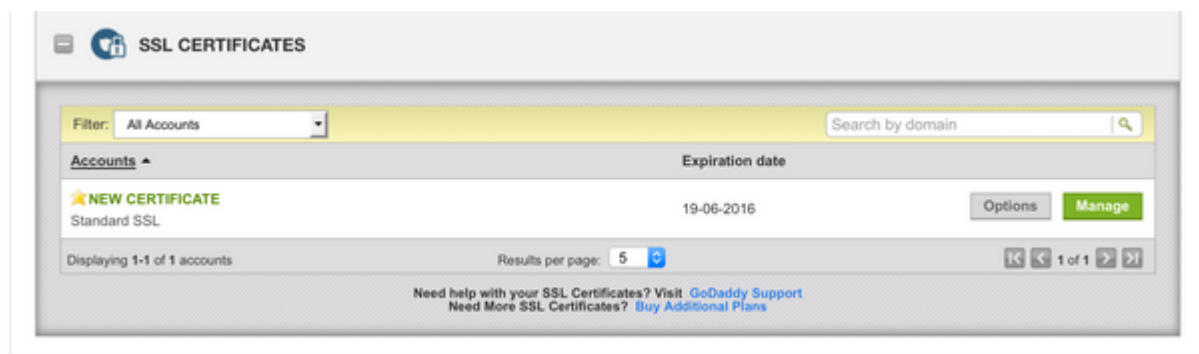
The next step is to get the CSR signed from the CA. The CA provides either a newly generated PEM encoded Identity Certificate or with a PKCS12 certificate along with the CA certificate bundle.

If the CSR is generated outside the ASA (either via OpenSSL or on the CA itself), the PEM encoded Identity Certificate with the Private Key and CA certificate are available as separate files. [Appendix B](#) provides the steps to bundle these elements together into a single PKCS12 file (.p12 or .pfx format).

In this document, the GoDaddy CA is used as an example to issue identity certificates to the ASA. This process differs in other CA vendors. Read through the CA documentation carefully before proceeding.

Example of SSL Certificate Generation on GoDaddy CA

After purchase and the initial setup phase of the SSL certificate, navigate to the GoDaddy Account and view the SSL Certificates. There must be a new certificate. Click **Manage** to proceed.



This then brings up a page to provide the CSR as seen in this image.

Based on the CSR entered, the CA determines the Domain Name to which the certificate is to be issued.

Verify that this matches the FQDN of the ASA.

Choose website

Select a domain hosted with us

Provide a certificate signing request (CSR)

Certificate Signing Request (CSR) [Learn more](#)

```
/ypj9KO49fP5ap8al0qvLtYYcCcfwrCt+OojOrZ1YyJb3dFuMNRRedAX37t
DuHNI2EYNpYkjVkl53/5w3
-----END CERTIFICATE REQUEST-----
```

Domain Name (based on CSR):

vpn.remoteasa.com

Domain ownership

We'll send an email with a unique code to your address on file. Follow its instructions to verify you have website or DNS control over the selected domain. [More info](#)

AND

We can send domain ownership instructional emails to one or both of the following:

- Contacts listed in the domain's public WHOIS database record
- Email addresses: admin@[domain], administrator@[domain], hostmaster@[domain], postmaster@[domain], and webmaster@[domain]

[Hide advanced options](#)

Signature Algorithm [Learn more](#)

GoDaddy SHA-2

I agree to the terms and conditions of the [Subscriber Agreement](#).

Note: GoDaddy and most other CAs use SHA-2 or SHA256 as the default Certificate Signature Algorithm. ASA supports the SHA-2 signature algorithm which starts from **8.2(5)** [pre-8.3 releases] and **8.4(1)** [post-8.3 releases] onwards (Cisco bug ID [CSCti30937](#)). Choose SHA-1 signature algorithm if a version older than 8.2(5) or 8.4(1) is used.

Once the request is submitted, GoDaddy verifies the request before it issues the certificate.

After the certificate request is validated, GoDaddy issues the certificate to the account.

The certificate can be then downloaded for installation on the ASA. Click **Download** on the page in order to proceed further.

Certificates Repository Help Report EV Abuse

All > vpn.remoteasa.com
Standard SSL Certificate

Certificate Management Options

Download Revoke Manage

Certificate Details

Status	Certificate issued
Domain name	vpn.remoteasa.com
Encryption Strength	GoDaddy SHA-2
Validity Period	7/22/2015 - 7/22/2016
Serial Number	25:cd:73:a9:84:07:06:05

Display your SSL Certificate security seal

Design your seal, copy the code, and paste it in your site footer.

Color: Light

Language: English

Preview: VERIFIED & SECURED VERIFY SECURITY

```

<span id="siteSeal"><script
type="text/javascript"
src="https://seal.godaddy.com
/getSeal?sealID=bpFxbq9KmjyEhewK0p4Ztd
&u=https://vpn.remoteasa.com"></script>
Ctrl+C to copy

```

Choose **Other** as the Server Type and download the certificate zip bundle.

Certificates Repository Help Report EV Abuse

vpn.remoteasa.com > Download Certificate
Standard SSL Certificate

To secure your site that's hosted elsewhere, download the Zip file that matches your hosting server type. Then, install all of the certificates in the Zip file on your hosting server, including any intermediate certificates that might be needed for older browsers or servers.

First time installing a certificate? [View Installation Instructions for the selected server.](#)

Server type

Select ...

Select ...
Apache
Exchange
IIS
Mac OS X
Tomcat
Other

File Cancel

The .zip file contains the identity certificate and GoDaddy CA certificate chain bundles as two separate .crt files. Proceed to SSL certificate installation to install these certificates on the ASA.

SSL Certificate Installation on the ASA

The SSL certificate can be installed on the ASA with either ASDM or CLI in two ways:

1. Import the CA and identity certificate separately in PEM formats.
2. Or import the PKCS12 file (base64 encoded for CLI) wherein Identity certificate, CA certificate, and

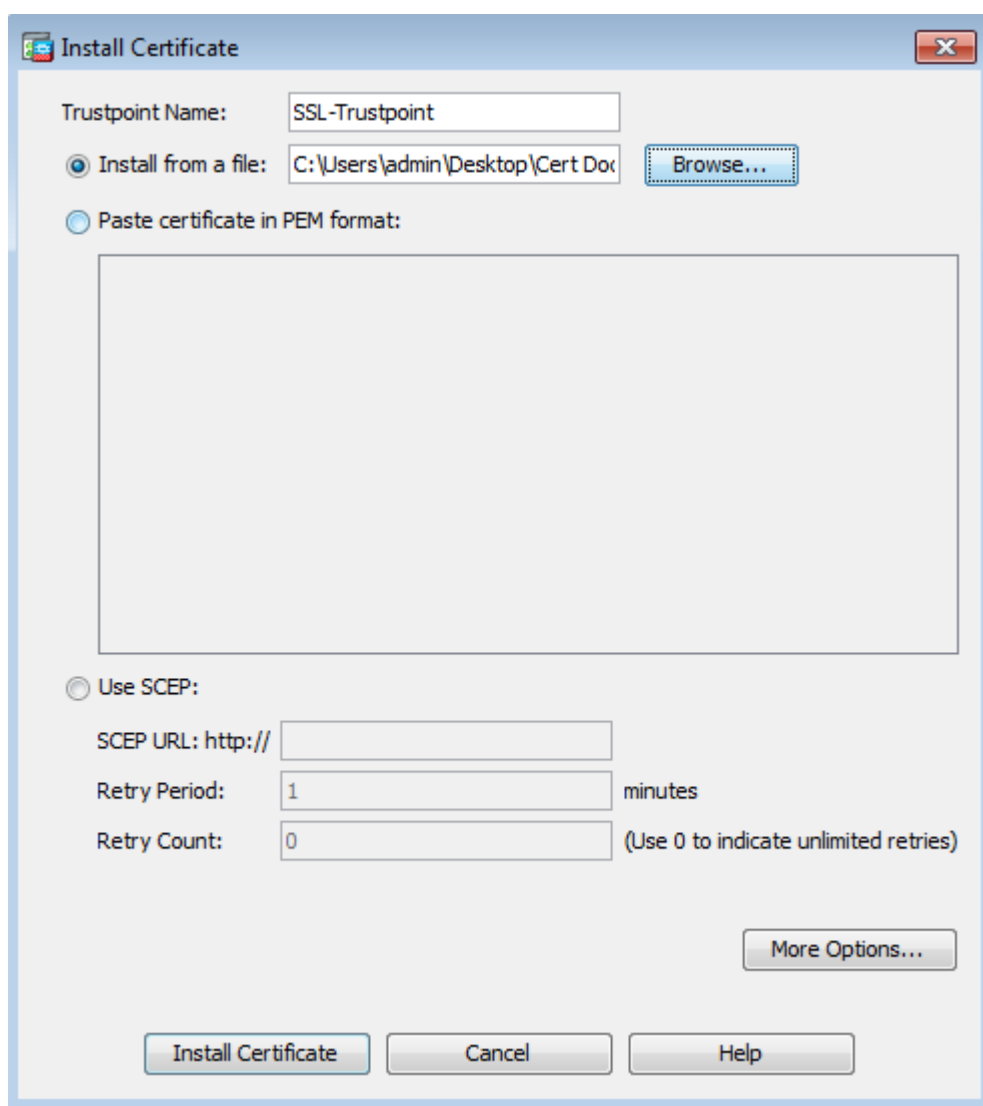
private key are bundled in the PKCS12 file.

Note: If the CA provides a CA certificate chain, only install the immediate intermediate CA certificate in the hierarchy on the trustpoint used to generate the CSR. The Root CA certificate and any other intermediate CA certificates can be installed in new trustpoints.

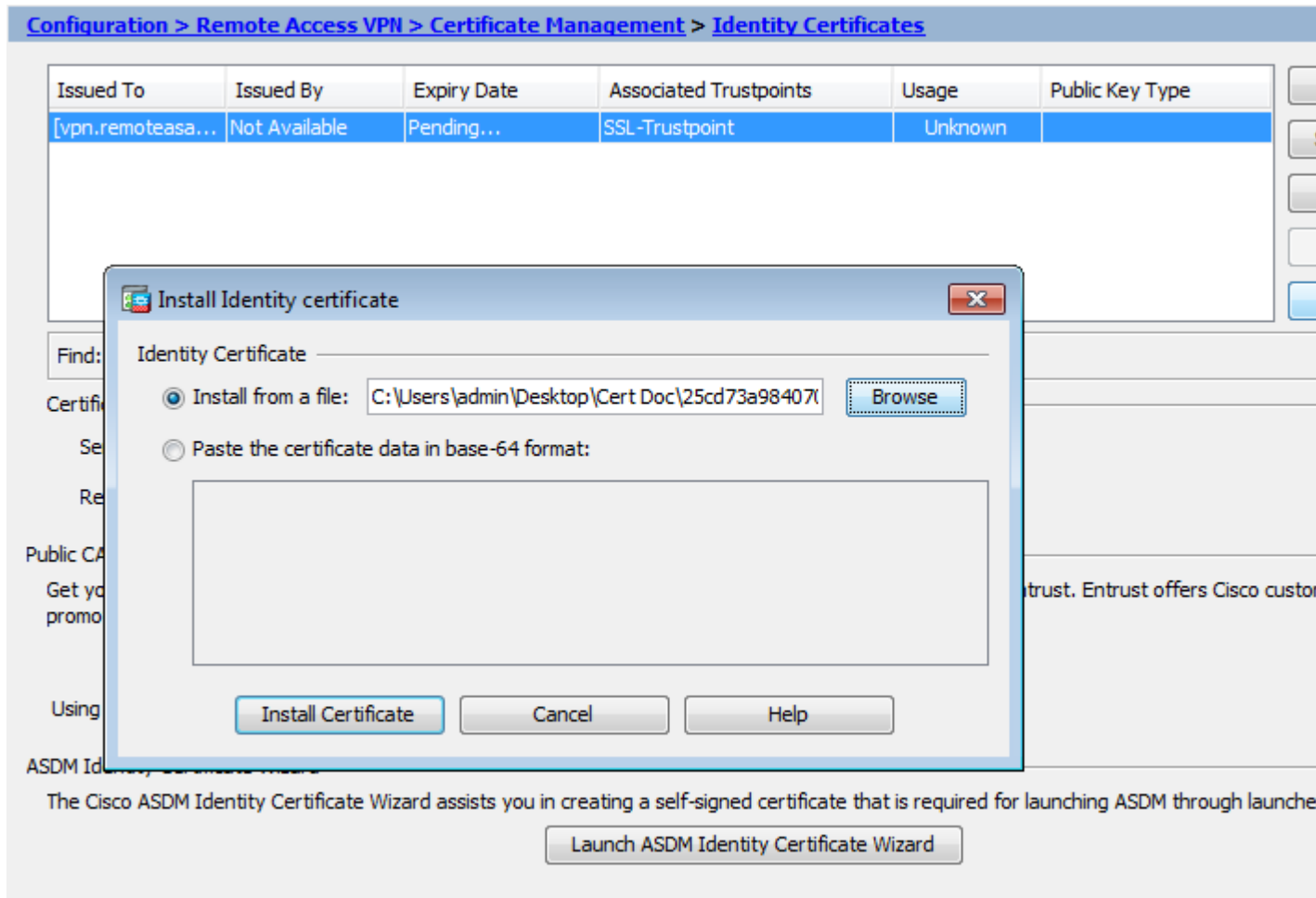
1.1 Installation of the Identity Certificate in PEM Format with ASDM

The installation steps given assume that the CA provides a PEM encoded (.pem, .cer, .crt) identity certificate and CA certificate bundle.

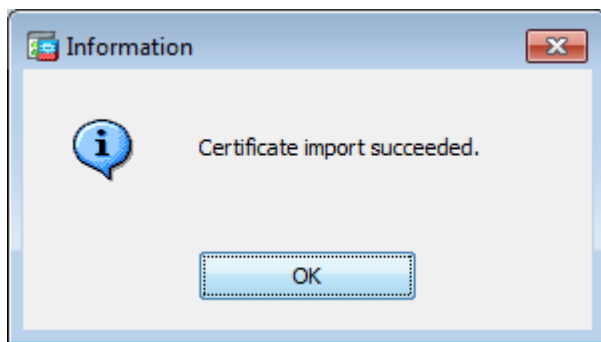
1. Navigate to **Configuration > Remote Access VPN > Certificate Management**, and choose **CA Certificates**.
2. The PEM encoded certificate in a text editor and copy and paste the base64 CA certificate provided by the third-party vendor into the text field.



3. Click **Install certificate**.
4. Navigate to **Configuration > Remote Access VPN > Certificate Management**, and choose **Identity Certificates**.
5. Select the Identity Certificate created previously. Click **Install**.
6. Either click the option **Install from a file** radio button and choose the PEM encoded Identity certificate or, open the PEM encoded certificate in a text editor and copy and paste the base64 Identity certificate provided by the third-party vendor into the text field.



7. Click **Add Certificate**.

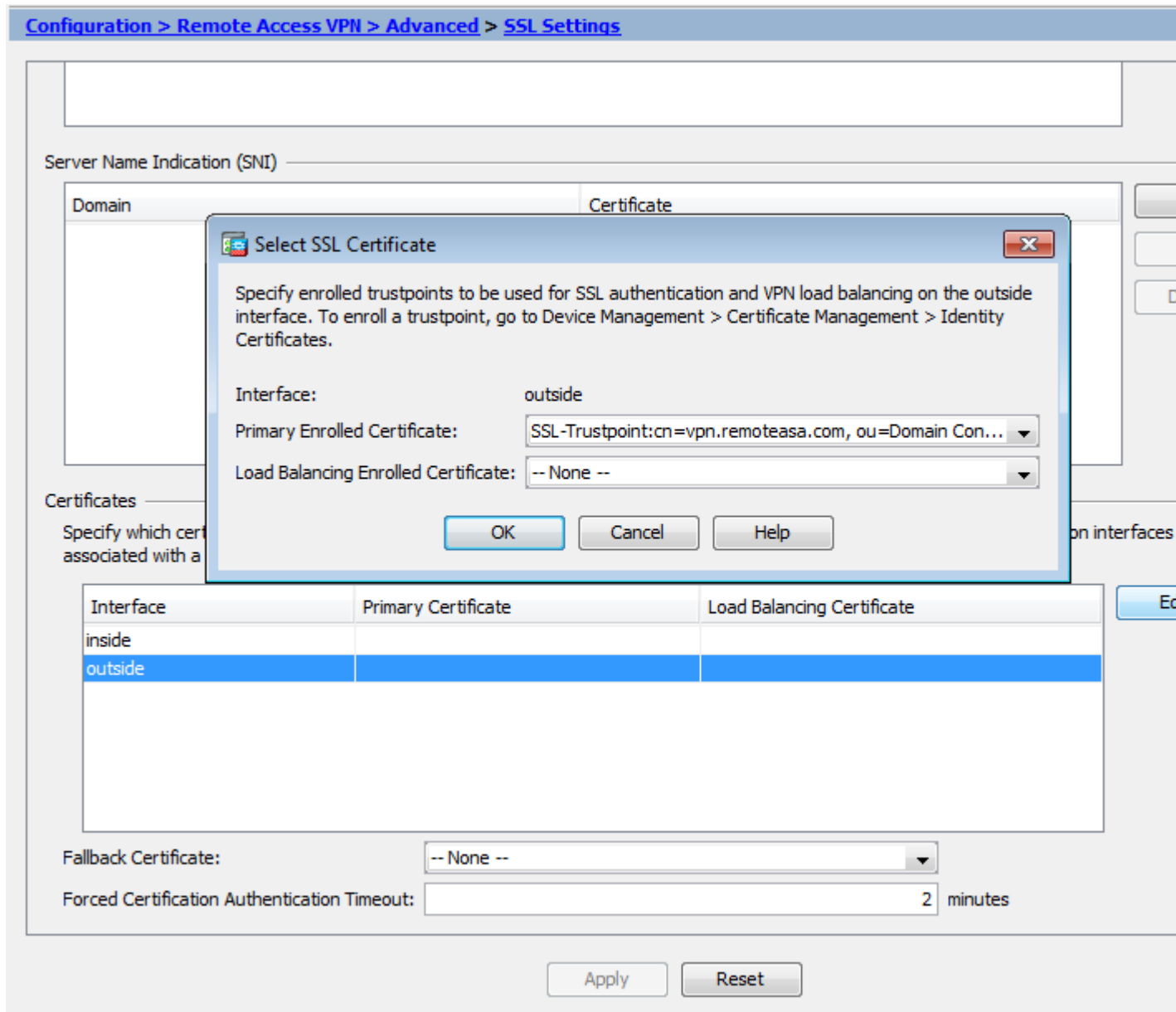


8. Navigate to [Configuration](#) > [Remote Access VPN](#) > [Advanced](#) > [SSL Settings](#).

9. Under **Certificates**, select the interface that is used to terminate WebVPN sessions. In this example, the outside interface is used.

10. Click **Edit**.

11. In the **Certificate** drop-down list and choose the newly installed certificate.



12. Click **OK**.

13. Click **Apply**. The new certificate is now utilized for all WebVPN sessions that terminate on the interface specified.

1.2. Installation of a PEM Certificate with the CLI

```
<#root>
```

```
MainASA(config)#
```

```
crypto ca authenticate SSL-Trustpoint
```

Enter the base 64 encoded CA certificate.
End with the word "quit" on a line by itself

```
-----BEGIN CERTIFICATE----- MIIADCCAuigAwIBAgIBADANBgkqhkiG9w0BAQUFADBjMQswCQYDVQQGEwJVUzEhMB8GA1UECHM
```

!!! - Installing Next-level SubCA in the PKI hierarchy

!!! - Create a separate trustpoint to install the next subCA certificate (if present) in the hierarchy leading up to the Root CA (including the Root CA certificate)

```
MainASA(config)#crypto ca trustpoint SSL-Trustpoint-1
MainASA(config-ca-trustpoint)#enrollment terminal
MainASA(config-ca-trustpoint)#exit
MainASA(config)#
MainASA(config)# crypto ca authenticate SSL-Trustpoint-1
Enter the base 64 encoded CA certificate.
End with the word "quit" on a line by itself
```

-----BEGIN CERTIFICATE-----

```
MIIEftCCA2WgAwIBAgIDG+cVMA0GCSqGSIb3DQEBCwUAMGMxCzAJBgNVBAYTA1VT
MSEwHwYDVQQKEzhUaGUGR28gRGFkZHZhZG93JvdXAsIEluYy4xMTAvBgNVBAsTKEdv
IERhZGR5IENsYXNzIDIgQ2VydGlmawNhdGlvbiBBdXR0b3JpdHkwHhcNMTQwMTAx
MDcwMDAwWhcNMzEwNTMwMDcwMDAwWjCBgzELMAKGA1UEBhMCMVVMxEDA0BgNVBAGT
B0FyaXpvcmbExEzARBgNVBACTClNjb3R0c2RhbGUxGjAYBgNVBAoTEUdvRGFkZHZku
Y29tL0BjbmuMTewLWYDVQQDEyhHbyBEYWRkeSB5b290IENlcnpZmljYXR1IEF1
dGhvcml0eSAtIEcyMIIIBjANBgkqhkiG9w0BAQEFAAOCAQ8AMIIBCgKCAQEA3Fi
CPH6WTT3G8kYo/eASVjpIoMTpsUgQwE7hPHmhUmfJ+r2hBtOoLTbcJjHMgGxBT4H
Tu70+k8vWTAi56sZVmvigAf88xZ1gDlRe+X5NbZ0TqmNghPktj+pA4P6or6KFWp/
3gvDthkUBcrqw6gElDtGfDIN8wBmIisiNaW02jBEYt90yHGC00PoCjM7T3UYH3go+
6118yHz7sCtTpJJiaVElBWEaRIGMLK1DliPfrDqBmg4pxRyp6V0etp6eMAo5zvGI
gPtLXcwy7IViQyU0A1YnAZG003AqP26x6JyIAX2f1PnbU21gnb8s51iruF9G/M7E
GwM8CetJMVxpRpRgRwIDAQABo4IBFzCCARMwDwYDVR0TAQH/BAUwAwEB/zAOBgNV
HQ8BAf8EBAMCAQYwHQYDVR00BBYEFdqahQcQZyi27/a9BUFuIMGU2g/eMB8GA1Ud
IwQYMBaAFNLEsNKR1EwRcbNhyz2h/t2oatTjMDQGCCsGAQUFBwEBBCgwJjAkBggr
BgEFBQcwAYYYaHR0cDovL29jc3AuZ29kYWRkeS5jb20vMDIGA1UdHwQrMCkwJ6Al
oCOGIWh0dHA6Ly9jcmwuZ29kYWRkeS5jb20vZ2Ryb290LmNybDBGBG9wHSAEPzA9
MDsGBFUDIAAwMzAxBggrBgEFBQcCARYlaHR0cHM6Ly9jZXJ0cy5nb2RlZGR5LmNv
bS9yZXBvc2l0b3J5LzANBgkqhkiG9w0BAQsFAAOCAQEAWQtTvZKGEacke+1bMc8d
H2xwxbhuvk679r6XU0Ewf7ooXGKUwuN+M/f7QnaF25UcjCJYdQkMiGVn0QoWcWg
0JekxS0TP7QYpgEGRJHjp2kntFolfzq3Ms3dhP8q0Ckzpn1nsoX+oYggHFCJyNwq
9kIDN0zmiN/VryTyscPzfLXs4Jlet01UIDyUGAZHHFIYSaRt4bNYC8nY7NmuHDK0
KHAN4v6mF56ED71XcLNa6R+ghl0773z/aQvgSM03kwwIClTErF0UZzdsyqUvMQg3
qm5vjLyb4lddJIGv15echK1srDdMZvNhkREg5L4wn3qkKQmw4TRfZHCyQFHfjDCm
rw==
```

-----END CERTIFICATE-----

quit

```
INFO: Certificate has the following attributes:
Fingerprint:      81528b89 e165204a 75ad85e8 c388cd68
Do you accept this certificate? [yes/no]: yes
```

Trustpoint 'SSL-Trustpoint-1' is a subordinate CA and holds a non self-signed certificate.

Trustpoint CA certificate accepted.

```
% Certificate successfully imported
BGL-G-17-ASA5500-8(config)#
```

!!! - Similarly create additional trustpoints (of the name "SSL-Trustpoint-n", where n is number thats incremented for every level in the PKI hierarchy) to import the CA certificates leading up to the Root CA certificate.


```
!!! - Importing identity certificate (import it in the first trustpoint that was
created namely "SSL-Trustpoint")
```

```
MainASA(config)#
```

```
crypto ca import SSL-Trustpoint certificate
```

```
WARNING: The certificate enrollment is configured with an fqdn that differs from the system fqdn. If th
yes
```

```
% The fully-qualified domain name in the certificate will be:
```

```
(asa.remotevpn.url)
```

```
Enter the base 64 encoded certificate. End with the word "quit" on a line by itself
```

```
----BEGIN CERTIFICATE-----
```

```
MIIFRjCCBC6gAwIBAgIIJc1zqYQHBgUwDQYJKoZIhvcNAQELBQAwgbQxCzAJBgNV
BAYTA1VTMRAwDgYDVQQIEwdBcm16b25hMRMwEQYDVQQHEwpTY290dHNkYWx1MRow
GAYDVQQKExFHb0RhZGR5LmNvbSwS5jLjEtMCsGA1UECxMkaHR0cDovL2N1cnRz
LmdvZGFkZHZhY29tL3JlcG9zaXRvcnkMTMwMQYDVQQDEypHbyBEYWRkeSBTZWN1
cmUgQ2VydG1maWNhdGUgQXV0aG9yaXR5IC0gRzIwHhcNMTUwNzIyMTIwNDM4WhcN
MTYwNzIyMTIwNDM4WjA/MSEwHwYDVQQLEXhEb21haW4gQ29udHJvbCBWYXpZGF0
ZWQxGjAYBgNVBAMTEXWbi5yZW1vdGVhc2EuY29tMIIIBIjANBgkqhkiG9w0BAQEF
AAOCAQ8AMIIBCgKCAQEArrY2Fv2S2Uq5HdDh0aSzK5Eyok2tv2Rem8DofbTQ+4F9
C9IXitWdLa06a7dzyfB4S9hx1VZxoHMGd6i9NWLXsWU1Nx5pRMaKR4h1cL6bDW
ITt5GzKdL93ibMxYmau+uwM30kBB8QxLNNxr4G+oXtFavctTxWy/o6LzKWFyj0XP
tta9FZW07c0MNvKiUL1v9WBcy4GK1xyvN9RtWebtVkM5/i0v0ReBTBFfXCJ1YQAG
UWteu1ikWAGj1qomZGnZgAFDwJ4/hxjesG2BGMtwX5L108cbmbi/u/vnmZ5Xhiqx
<snip>
```

```
CCsGAQUFBwIBFitodHRwOi8vY2VydG1maWNhdGVzLmdvZGFkZHZhY29tL3JlcG9z
aXRvcnkMhYGCCsGAQUFBwEBBGowaDAkBggrBgEFBQcwAYYYaHR0cDovL29jc3Au
Z29kYWRkeS5jb20vMEAGCCsGAQUFBzAChjRodHRwOi8vY2VydG1maWNhdGVzLmdv
ZGFkZHZhY29tL3JlcG9zaXRvcnkZ2R2RzZzIuY3J0MB8GA1UdIwQYMBaAFEDCvSe0
zDSDMKIz1/tss/C0LIDOMEYGA1UdEQQ/MD2CEXZwbi5yZW1vdGVhc2EuY29tghV3
d3cudnBuLnJlbW90ZWFzYS5jb22CEXZwbi5yZW1vdGVhc2EuY29tMB0GA1UdDgQW
BBT7en7YS3PH+s4z+wTRlpHr2tSzejANBgkqhkiG9w0BAQsFAAOCAQEA09H8TLNz
2Y0rYdI6gS8n4imaSYg9Ni/9Nb6mote3J2LELG9HY9m/zUCR5yVkra9azdrNUAN
1hjBJ7kKQScLC4sZL0NdqG1uTP5rbWR0yikF5wSzyMwd03kOR+vM8q6T57vRst5
69vzBUuJc5bSu1IjyfPP19z1l+B2eBwUFbVfXLnd9bTfiG9mSmC+4V63TXFxt10q
xkGNys3GgYuCUy6yRP2cAUv1lc2tYtaxoCL8yo72YUDDgZ3a4Py01EvC1F0aUtgv
6QNEOYwmbJkyumdPUwko6wGOC0Wlumzv5gHnhil68HYSZ/4XIlp3B9Y8yfG5pwnb
7pukahH+XgQRdg==
```

```
-----END CERTIFICATE-----
```

```
quit
```

```
INFO: Certificate successfully imported
```

```
! Apply the newly installed SSL certificate to the interface accepting SSL connections
```

```
MainASA(config)#
```

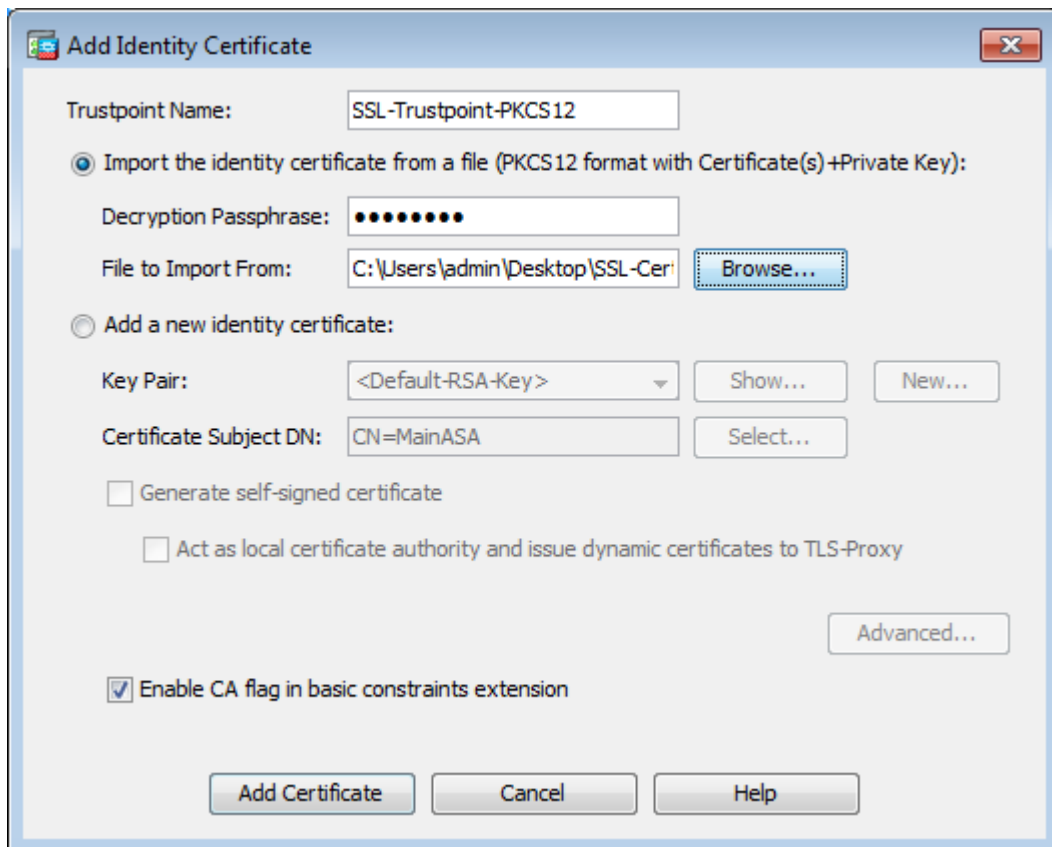
```
ssl trust-point SSL-Trustpoint outside
```

2.1 Installation of a PKCS12 Certificate with ASDM

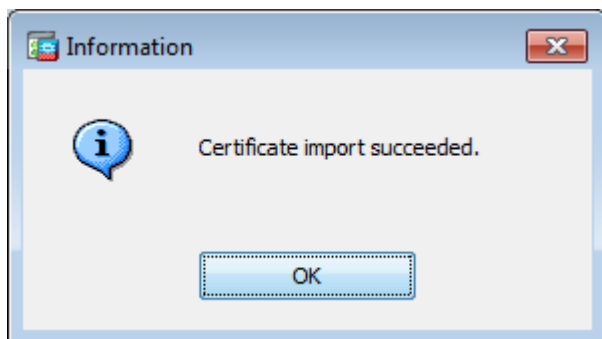
In cases where the CSR is not generated on the ASA, such as in the case of a wildcard certificate or when a UC certificate is generated, an Identity certificate along with the private key are received as separate files or

a single bundled PKCS12 file (.p12 or pfx format). In order to install this type of certificate, complete these steps.

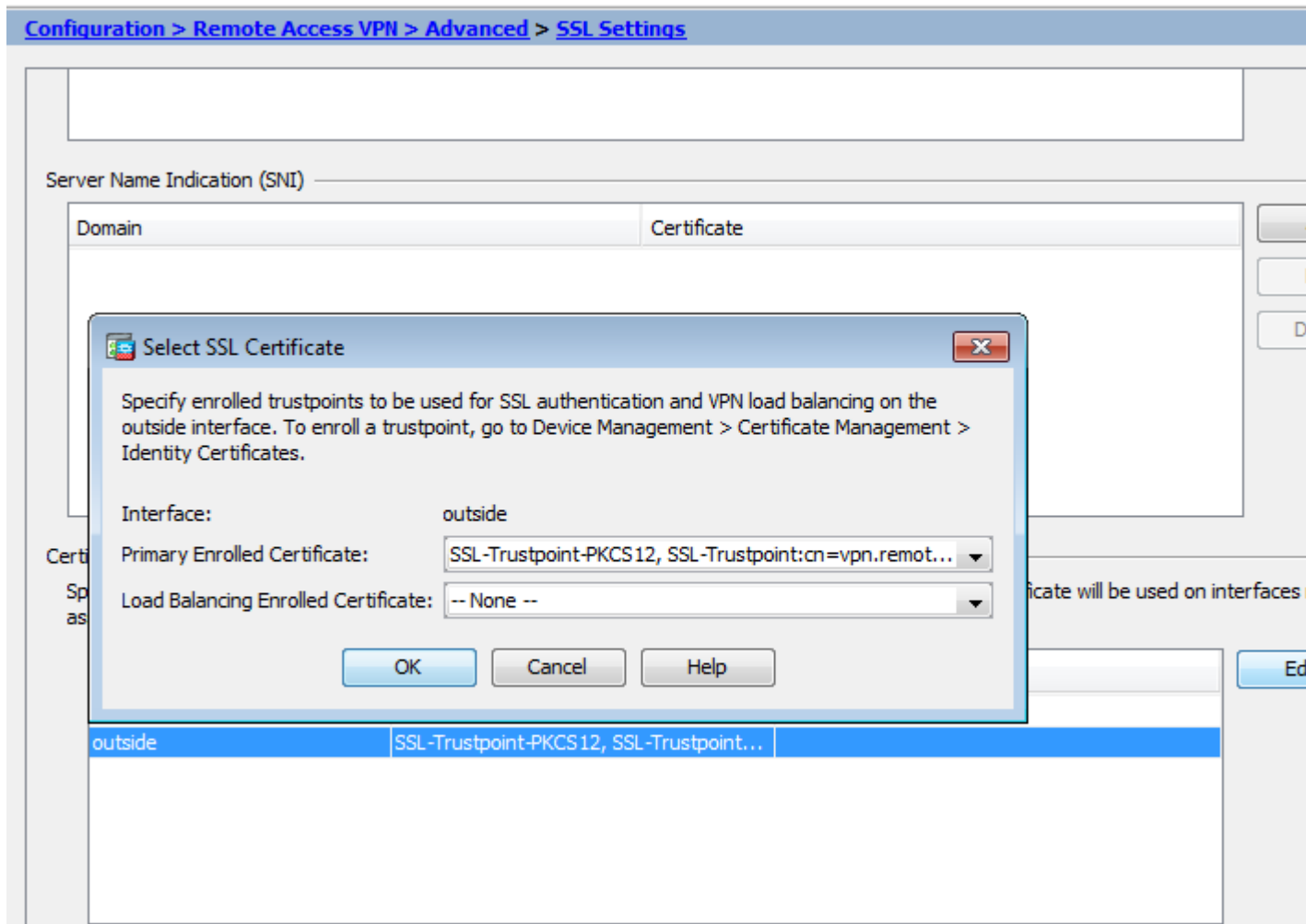
1. The Identity certificate, bundle the CA certificate and private key into a single PKCS12 file. [Appendix B](#) provides the steps to do this with OpenSSL. If already bundled by the CA, proceed to the next step.
2. Navigate to **Configuration > Remote Access VPN > Certificate Management**, and choose **Identity Certificates**.
3. Click **Add**.
4. Specify a Trustpoint name.
5. Click the **Import the identity certificate from a file** radio button.
6. Enter the passphrase used to create the PKCS12 file. Browse and select the PKCS12 file. Enter the certificate passphrase.



7. Click **Add Certificate**.



8. Navigate to **Configuration > Remote Access VPN > Advanced**, and choose **SSL Settings**.
9. Under **Certificates**, choose the interface that is used to terminate WebVPN sessions. In this example, the outside interface is used.
10. Click **Edit**.
11. In the **Certificate** drop-down list, choose the newly installed certificate.



12. Click **OK**.

13. Click **Apply**. The new certificate are now utilized for all WebVPN sessions that terminate on the interface specified.

2.2 Installation of a PKCS12 Certificate with the CLI

```
<#root>
```

```
MainASA(config)#
```

```
crypto ca trustpoint SSL-Trustpoint-PKCS12
```

```
MainASA(config-ca-trustpoint)#
```

```
enrollment terminal
```

```
MainASA(config-ca-trustpoint)#
```

```
exit
```

```
MainASA(config)#
```

```
crypto ca import SSL-Trustpoint-PKCS12 pkcs12 cisco123
```

Enter the base 64 encoded pkcs12.

End with the word "quit" on a line by itself:

```
-----BEGIN PKCS12-----
```

MIISNwIBAZCCEfEGCSqGSIB3DQEHAaCCEeIEghHeMIIR2jCCEdYGCsQGSIB3DQEH
BqCCEccwghHDAgEAMIIRvAYJKoZIhvcNAQcBMBsGCiQGSIB3DQEMAQMwDQqIWO3D
hDti/uECAQGAghGQ9ospee/qtIbVZh2T8/Z+5dxRPBcStDTqyKy7q3+9ram5AZdG
Ce9n5UCckqT4WcTjs7XZtCrUrt/LkNbmGDVhwGbmYWi0S7npgauQ0eoqiJRK+Yc7
LN0nbho6I5WfL56/JiceAMlXDLr/IqqLg2QAAPGdN+F5vANsHse2GsAATewBDLt7
Jy+SKfoNvvIw9QvzCiUzmjYZBANmBdMCQ13H+YQTHitT3vn2/iCDLzRSuXcqypEV
q5e3hei00751E8TDLWm03PMvWIZqi8yzWesjcTt1Kd4FoJBZpB70/v9LntoIU0Y7
kIQM8fHb4ga8BYfbgRmG6mkMm01STtbSv1vTa19WTmdQdTycA+G5PkrryRsy3Ww1
lkGFmHImmrnNADF7Hmzbys1VohQZ7h09iVQY9krJogoXHjmQYxG9brf0oEwxSJDa
mGDhheSh+s/WuFSV9Z9kiTXpJNZxpTASoWBQrrwm05v8ZwjbvVNJ7sVdbwpU16d+
NNFGR7LTq08hpupeeJnY9eJc2yYqeAXWXQ5kL0Z06/gBEdGtEaZBgCFK9JZ3b13A
xqxGifanWPnLYG611NKuNjTgbjhnEEYI2uZzU0qxn1Ka8zyXw+lzrKuJscDbkAPZ
wKtw8K+p40zXVHhuANO6MDvffNRY1KQDtyK1inoPH5ksVSE5awkVam4+HTcqEUfa
16LMana+4QRgSetJhU0LtsMaQfRjGkha4JLq2t+JrCAPz2osARLtsB0jQBNq6YNj
0uB+gGk2G18Q5N1n6K1fz0XBFZLWEDBLsaBR05MANE7wWt00+4awGYqVdmIF1lkf
XIRKaiQEer1pZ6BVPuvsCNJxaaUHzufhYI2ZAckasKBZ0T8/7YK3fnAaGoBCz4cHa
o2EEQhq2aYb6YTv0+wtLEWGHZsbGZEM/u54XmsXAI7g28LGJYdfWi509KyV+Ac1V
KzhqXZMM2BbUQCNCtF5JIMiW+r62k42FdahfaQb0vJsIe/IwkAKG7y6DIQFs0hwg
ZlPXidbNr1k4e8L4gqumMKWg853PY+oY22rLDC7bul1CKtixIYBCvbn7dAYsI4GQ
16xXhNu3+iye0HgbUQCfTU/mBrA0Z0+bpKjWOCfqNBuYnZ6kUEdCI7GFLH9Qqtm
K7YinFLohWtWbi3MsmqVv+Z4ttVWY7Xmiko02nMynJMP6/CNV80MxMKdC2qm+c1j
s4Q1KcAmFsQmNp/7SIP1wnv0c6JbUmC10520U/r8ftTzn8C7WL62W79cLK4H0r7J
sNsZn0z0J0Z/xdZT+cLTCtVevKJQMK3vMsi0uy52FkuF3HnfrmBqDkBR7yZxELG
RCEL0EDdbp8VP0+IhNlyz1q7975SscdxFSL0TvjnHGFwd14ndoqN+blhWbdPjQWV
13W2NCI95tmHDLGgp3P001S+rjdCEGGMg+9cpgBfFC1JocuTDIEcUbJBY8QRUNiS
/ubyUagdzUKt1ecfb9hMLP65ZNQ93VIw/NJKbIm7b4P/1Zp/1FP5eq7LkQPAXE4/
bQ4mHcnwrs+JGfkn19B8hJmmGoowH3p4IEvWzY7CThB3E1ejw5R4enqmrgrvHqpQe
B7odN10FLAHdo1G5BsHEXluNEsEb40Q0pmKXidDB5B001bJs748fZ6L/LGx8A13
<snip>

ijDqxyfQXY4zSyt1jSmWmtYA9hG5I79Sg7pnME1E9xq1D0oRgg8vgx1wicikLxp
LL0ReDY31KRYv00vW0gf+tE71ST/3TKZvh0sQ/BE0V3kHnw1dejMFH+dvyAA9Y1E
c80+tdafBFX4B/HP46E6heP6ZSt0xAfRW1/JF41jNvUNV09vtVfR2FTyWpzZFY8A
GG5XPIA80WF6wKEPFHICn8scY+Vot8kXxG96hwt2Cm5NQ20nVzxUZQbpKsjs/2jC
3HVFe3UJFBsY9UxTLCpXYBSIG+VeqkI8hWZp6c1TfNDLY2ELDy1QzP1mBg2FujZa
YuE0avjCjZbZUG2umtS5mHQnwPF+Xk0ujEyhGMauhGxHp4ngHsZrUZrBeul91UF
2mbps0cgZkzxMS/rjdnXjCmPF1oRBvKkZS1xHFRE/5ZopAhn4i7YtHQNrZ9U4RjQ
xo9cUuaJ+LnmvzE8Yg3epAMYZ16UNGQqkVQ6ME4BcjRONzW8BYgTq4+pmT1Znq1P
X87CXCPtYRpHF57eSo+tHDINCgfqYXD6e/7r2ngfiCeUeNDZ4aV12XxvZDaU1BPP
Tx5fMARqx/Z8BdDyBJDVBjdsxmQau9HLkhPvdfGLZIwdTe13CzKqXA5Ppmpjt4q9
GnCpC53m76x9Su4ZDw6aUdBcgCTMvfaqJC9gz0bee2Wz+aRRwzSxu6tEwVzo1PEM
v0AA7po3vPek1g0nLRAwEoTTn4SdgNLWeRoxqZgkw1FC1GrotxF1so7uA+z0aMeU
lw73xeonsNdZvRAcVX3Y6UNFDyt70Ixvo1H4VLzWm0K/op62C9/eqqMwZ8zoCMPt
ENna7T+70s66SCbMmXCHwyh00tygNKZFFw/AATFyjqPMWPAxGuPN0rnB6uYcn0Hk
1BU7tF143RNIzaQqEH3XnaPvUuAA4C0FCoE3h+/tVjtfNKDvFmb6ZLZHYQmUYpyS
uhdFEpoDrJH1VmI2tik/iqYwaz+oDqXPHQXnJhw25h9ombR4qnD+FCfwFCgtPFON
o3QffZ53C95n5jPHVMYUr0x0DdpwnvzCQPdj6yQm564TwLAmiz7uD1pqJZJe5QxHD
no1v+4MdGSfVtBq+ykFoVcaamqeaq6sKgvAVujLXXEs4KEmIgcPqATVRG49E1ndI
L01DEQyKhVoDGebAuVRBjzWAm/qxWxxFv3hrbCjPHCwEYms4Wgt/vKKRFsuWJNZf
efH1dw1l1tkd5dKwSvDocPT/7mSLtLJa94c6AfgxXy9z0+FTLDQwzXga7x2krAN1
yHXR2KHN5YeRL+KDzu+u6dYoKaz+YAgw1W6KbeavALSuH4EYqcvg8hUEhp/ySiSc
RDhuygxEOvIMGfES4FP5V521PyDhM3Dqwhn0vuYUmYnX8EXURkay44iwwI5HhqYJ
lptWYy08Bdr4WNwt5xqsZgZyR6mmGeAIin7bDunsF1uBHWFY4dyK1z1tsdRNMYYQ
+W5q+Qjvdrjldwv/bMFOaqEjxeNWRBqjzccff3BxMnwvVxtgqxFvRh+DZxiJoibG+
yx7x8np2AQ1r0METSSxbnZzfnKZKvBVMkIC6Jsm2WEVTQvofJ8em+nem0WgTi/
hHSBzjE7RhAucnHuiFOCX0gvR1SDDqyCQbiduc1QjXN0svA8Fqbea9WEH5kh0Pv3
pbtS14gsf12pv8diBQkVQgiZDi8Wb++7PR6ttiY65kVwrdsoN11/qq+xW0d3tB4/
zoH9LEMgTy9Ssz7myWrb9E00Z8BIjL1M8oMigEYrTD0c3KbyW1S9dd7QAxio0BaX1
8J8q10ydvTBzmqcJeSsFH4/1NHn5Vnf0ZnNpui4uhp0XBG+K2zJUJXm6dq1AHB1E
KQFsZpNNyave0kK8JzQnLAPd70UU/Iksy0CGQozGBH+HSzVp1RDjrRbC342rkBj
wnI+j+/1JdWbMhdJMZcfoMZFLSI9ZBqFirdii1/NRu6jh76TQor5TnNjxIyNREJC
FE5FZnmFvhM900LaiUzff8WWCofeRDMttLXb1nuxPF1+lRk+LN1PLVptWgcxzfSr
JXrGiWjxybBB9oC0rAcq8fGAtEs8WRxJyDH3Jjmn9i/G16J1mMCUF//LxAH2WQx8

```
Ld/qS50M2iFCffDQjxAj0K6DEN5pUebBv1Em5SOHXvyq5nngxUh4/y84CwaKjw0MQ
5tbbLMlnc7ALIj9LxZ97YiXSTyeM6oBxBfX6Rpk1kDv05mlBghSpVQiMcQ20RIkh
UVVNBsH019S3cb5wqxaWqAKBqb4h1uLGVbYWZf2mzLZ8U5U5ioiqoMBqNzbzTXp0
EqEFuatT1lQvCRbcKS3xou4MAixcYUxKwEhbZA/6hd10XSBJwe7jKBV9M6wliKab
UfoJCGTaf3sY68lqrMPrbt0eeWf1C02Sd9Mn+V/jvni17mxYFFUpruRq3r1LeqP
J5camfTtHwyL8N3Q/Zwp+zQeWziLA8a/iAVu/hYLR1bpF2WCK010tJqkvVmrLVLz
maZzjbJe0ft5cP/1RxbK1S6Gd5dFEKDE15c6gWUX8RKZP6Q7iaE5hnGmQjm8Lj1
kXwF+ivox0Q8a+Gg1bVTR0c7tqW9e9/ewisV1mwvEB6Ny7TDS1oPUDHM84pY6dqi
1+0io07Ked4BySwN1Yy9yaJtBTZSCstfP+ApLidN7pSBvvXf1aHmeNbkPOZJ+c+t
fGpUdL6V2UTXfCsOPHTC0ezA15sOHwCuPchrDIj/eGUwMS3NfS25XgcMuvnLqGV0
RzcrZlZiG8G0oLYw0CuzoY0D/m901001ahePyA9tmVB7HRRbytLdaW7gYeEikoCv
7qtBqJFF17ntWJ3EpQHZUcVClbHIKqjNqRbDCY7so4AlIw7kSEUGWMIUDhprE8Ks
NpnhPH2i9JrYrTeR0yUI0tL/7SATd2P0a2lxz/zUwekeqd0bmVCsAgQNbB2XkrR3
XS0B52o1+63e8KDq5zL2TZd3daDFidH1B8QB26tfb0Aca0bJH5/dWP8ddo8UYo
Y3JqTl0malxSjhaMhMqdZIQp49utW3Tcjg11YS4HEmcqtHud0ShaUysC6239j1Q
K1FWrwX1BC5vnq5Ic0Mqx5zyNbfXz28969cWoMcyU6+kRw0TyF6kF7EEv6Xwca
XLEwABx+tKRUKHJ673SyDMu96KMV3yZN+RtKbCjqCPVTP/3ZeIp7nCMUcj5sW9HI
N34yeI/0RCLyeGs0EiBLkucikC32LI9ik5HvImVTELQ0Uz3ceFqU/PkasjJUve6S
/n/1ZVUHbUk71xKR2bWZgECl7fIe17wlrbjpF3Wbk+Er0kfYcsNRHxeTdpKPSt9s
u/UsyQJiyNARG4X3iYQ1stce/06Ycyri6GcLHAu58B02nj4Cxo1Cp1ABZ2N79HtN
/7Kh5L0pS9MwsDCHuUI8KFrTset77B1tIU99FdB19L64s1/shYAHbccvVWU50Wht
PdLoaErrX81Tof41IxbSZbI8grUC4KfG2sdPLJKu3HVTQ8Lfl1bBLxfs8ZBS+0c
v8rHlQ012kY6LsFGLehJ+/yJ/uvXORiv0ESp4EHFpFfkp+o+YcFeLUUPd+jzb62K
HfSCCbLpCKyEay80dyWkHfgylqmb9ud0oM050aFJyqR0NjNt6pcxBRY2A6AJR5S
IIC26YNwbh0GjF9qL2FiUqnNH/7GTqPnd2qmsB6FTIwSBT6d854qN7PRt+ZXgdtQ
Ojcyt1r9qpWZpNFK8EzizwKiAYTsiEh2pzPt6YUpxRb6CXTkIzoG+KLsv2m3b8
0HyZ9a8z81/gnxrZ1ls5SCTf0SU70pHWh8VAYKVHhk+MWgQr0m/2ocV32dkRBLMy
2R6P4WfHyI/+9de1x3PtIu0iv2knpxHv2fKM6sQw45F7XkmwHxjq1YRJ6vIwPTAh
MAKGBSs0AwIaBQAeffTRETzpisHKZR+Kmen68VrTwpV7BBSQi0IesQ4n4E/bSVsd
qJSzcwh0hgICBAA=
-----END PKCS12-----
quit
```

INFO: Import PKCS12 operation completed successfully

!!! Link the SSL trustpoint to the appropriate interface
MainASA(config)#

```
ssl trust-point SSL-Trustpoint-PKCS12 outside
```

Verify

Use these steps in order to verify successful installation of the third-party Vendor Certificate and use for SSLVPN connections.

View Installed Certificates via ASDM

1. Navigate to **Configuration > Remote Access VPN > Certificate Management**, and choose **Identity Certificates**.
2. The identity certificate issued by the third-party vendor appears.

Issued To	Issued By	Expiry Date	Associated Trustpoints	Usage	Public Key Type
cn=vpn.remote...	cn=Go Daddy S...	12:04:38 UTC Jul ...	SSL-Trustpoint	General Purp...	RSA (2048 bits)

View Installed Certificates via the CLI

```
<#root>
```

```
MainASA(config)#
```

```
show crypto ca certificate
```

Certificate

```
Status: Available
Certificate Serial Number: 25cd73a984070605
Certificate Usage: General Purpose
Public Key Type: RSA (2048 bits)
Signature Algorithm: SHA256 with RSA Encryption
Issuer Name:
  cn=Go Daddy Secure Certificate Authority - G2
  ou=http://certs.godaddy.com/repository/
  o=GoDaddy.com\, Inc.
  l=Scottsdale
  st=Arizona
  c=US
Subject Name:
  cn=(asa.remotevpn.url)
  ou=Domain Control Validated
OCSP AIA:
  URL: http://ocsp.godaddy.com/
CRL Distribution Points:
  [1] http://crl.godaddy.com/gdig2s1-96.crl
Validity Date:
  start date: 12:04:38 UTC Jul 22 2015
  end   date: 12:04:38 UTC Jul 22 2016
Associated Trustpoints:
```

SSL-Trustpoint

CA Certificate

```
Status: Available
Certificate Serial Number: 07
Certificate Usage: General Purpose
Public Key Type: RSA (2048 bits)
Signature Algorithm: SHA256 with RSA Encryption
Issuer Name:
  cn=Go Daddy Root Certificate Authority - G2
```

o=GoDaddy.com\, Inc.
l=Scottsdale
st=Arizona
c=US
Subject Name:
cn=Go Daddy Secure Certificate Authority - G2
ou=http://certs.godaddy.com/repository/
o=GoDaddy.com\, Inc.
l=Scottsdale
st=Arizona
c=US
OCSP AIA:
URL: http://ocsp.godaddy.com/
CRL Distribution Points:
[1] http://crl.godaddy.com/gdroot-g2.crl
Validity Date:
start date: 07:00:00 UTC May 3 2011
end date: 07:00:00 UTC May 3 2031
Associated Trustpoints:

SSL-Trustpoint

CA Certificate

Status: Available
Certificate Serial Number: 1be715
Certificate Usage: General Purpose
Public Key Type: RSA (2048 bits)
Signature Algorithm: SHA256 with RSA Encryption
Issuer Name:
ou=Go Daddy Class 2 Certification Authority
o=The Go Daddy Group\, Inc.
c=US
Subject Name:
cn=Go Daddy Root Certificate Authority - G2
o=GoDaddy.com\, Inc.
l=Scottsdale
st=Arizona
c=US
OCSP AIA:
URL: http://ocsp.godaddy.com/
CRL Distribution Points:
[1] http://crl.godaddy.com/gdroot.crl
Validity Date:
start date: 07:00:00 UTC Jan 1 2014
end date: 07:00:00 UTC May 30 2031
Associated Trustpoints:

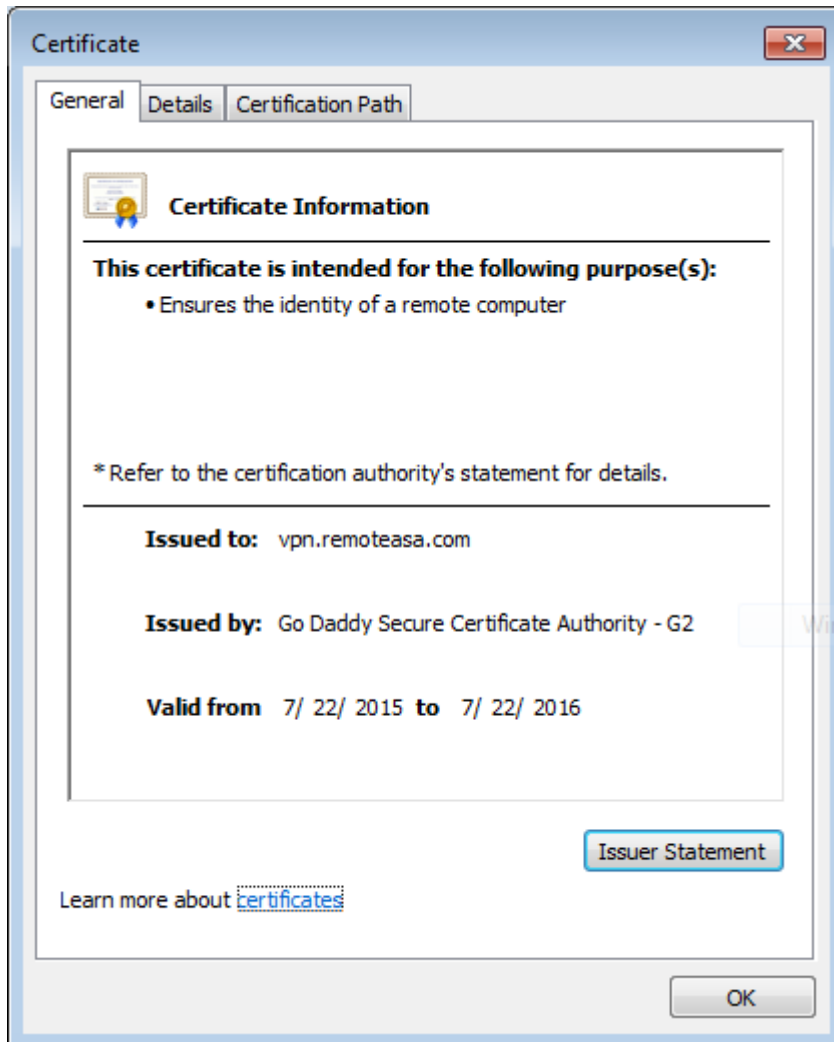
SSL-Trustpoint-1

...(and the rest of the Sub CA certificates till the Root CA)

Verify Installed Certificate for WebVPN with a Web Browser

Verify that WebVPN uses the new certificate.

1. Connect to the WebVPN interface through a web browser. Use https:// along with the FQDN used in order to request the certificate (for example, [https://\(vpn.remoteasa.com\)](https://(vpn.remoteasa.com))).
2. Double-click the lock icon that appears in the lower-right corner of the WebVPN login page. The installed certificate information must appear.
3. Review the contents in order to verify that it matches the third-party vendor issued certificate.



Renew SSL Certificate on the ASA

1. Regenerate the CSR either on the ASA, or with OpenSSL or on the CA with the same attributes as the old certificate. Complete the steps given in [CSR Generation](#).
2. Submit the CSR on the CA and generate a new Identity certificate in PEM format (.pem, .cer, .crt) along with the CA certificate. In the case of a PKCS12 certificate there is also a new Private key.

In the case of GoDaddy CA, the certificate can be rekeyed with a new CSR generated.

Go to the GoDaddy account and click **Manage** under SSL Certificates.

SSL CERTIFICATES

Filter: All Accounts

Accounts ▲	Expiration date
vpn.remoteasa.com Standard SSL	22-07-2016

Displaying 1-1 of 1 accounts Results per page: 5

Need help with your SSL Certificates? Visit [GoDaddy Support](#)
Need More SSL Certificates? [Buy Additional Plans](#)

Click **View Status** for the required domain name.

Certificates Repository Help Report EV Abuse

Certificates

Search domains ^ All Certificate Types All Statuses Not Ex

vpn.remoteasa.com	1 Year Standard SSL Certificate	Certificate issued	7/22/20
-------------------	---------------------------------	--------------------	---------

Click **Manage** in order to give options to re-key the certificate.

All > vpn.remoteasa.com

Standard SSL Certificate

Certificate Management Options

		
Download	Revoke	Manage

Certificate Details

Status	Certificate issued
Domain name	vpn.remoteasa.com
Encryption Strength	GoDaddy SHA-2
Validity Period	7/22/2015 - 7/22/2016
Serial Number	25:cd:73:a9:84:07:06:05

Expand the option **Re-Key certificate** and add the new CSR.

vpn.remoteasa.com > Manage Certificate

Standard SSL Certificate

Use this page to submit your certificate changes for review all at once, not individually. We'll review them together so your changes

Submitting any changes on this form will issue a new certificate and your current certificate will be revoked. You will have 72 hours to

Re-Key certificate *Private key lost, compromised, or stolen? Time to re-*

Certificate Signing Request (CSR)

```
13qHhfenpJRd3QX0kDh4P/wKI12bz/zb1v/SI
N80GsenQVuZaYzIHn3R9EU/3Rz9
PcctuZ18yZLZTr6NSxkl9im111aCuxlH9FmW
```

Domain Name (based on CSR):
vpn.remoteasa.com

Save

New Keys, please...
You can generate a Certificate Signing Request (CSR) from your operating system. Your CSR contains a public key and a private key at the same time.

Change the site that your certificate protects *If you want to switch your certificate from one site to another, click here.*

Change encryption algorithm and/or certificate issuer *Upgrade your protection or change the company behind your certificate.*

Save and proceed to the next step. GoDaddy issues a new certificate based on the CSR provided.

3. Install the new certificate on a new trustpoint as shown in the SSL Certificate Installation on the ASA section.

Frequently Asked Questions

1. What is the best way to transfer identity certificates out of one ASA onto a different ASA?

Export the certificate along with the keys to a PKCS12 file.

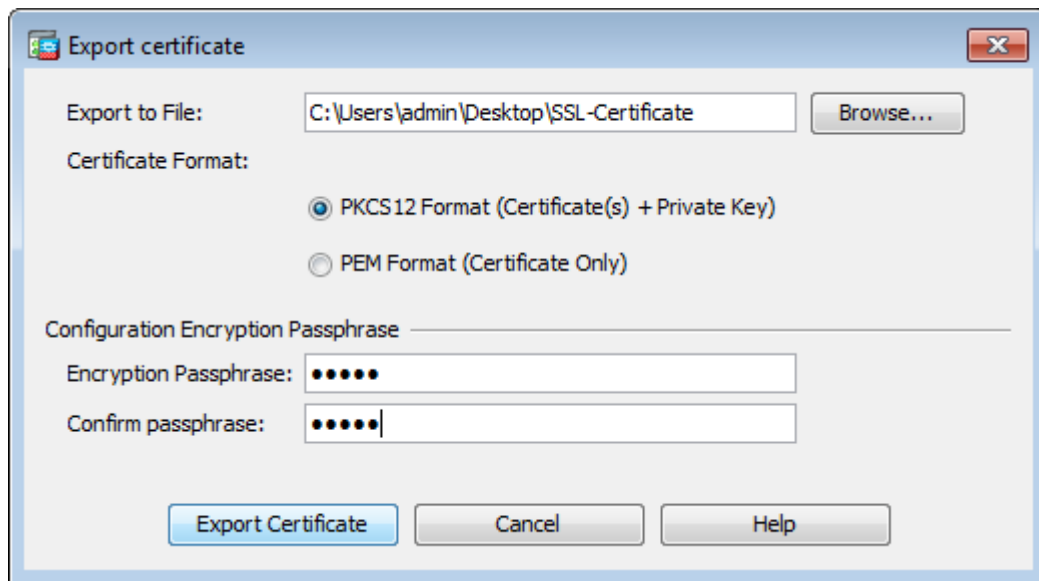
Use this command in order to export the certificate via the CLI from the original ASA:

```
<#root>
```

```
ASA(config)#
```

```
crypto ca export <trust-point-name> pkcs12 <passphrase>
```

ASDM configuration:



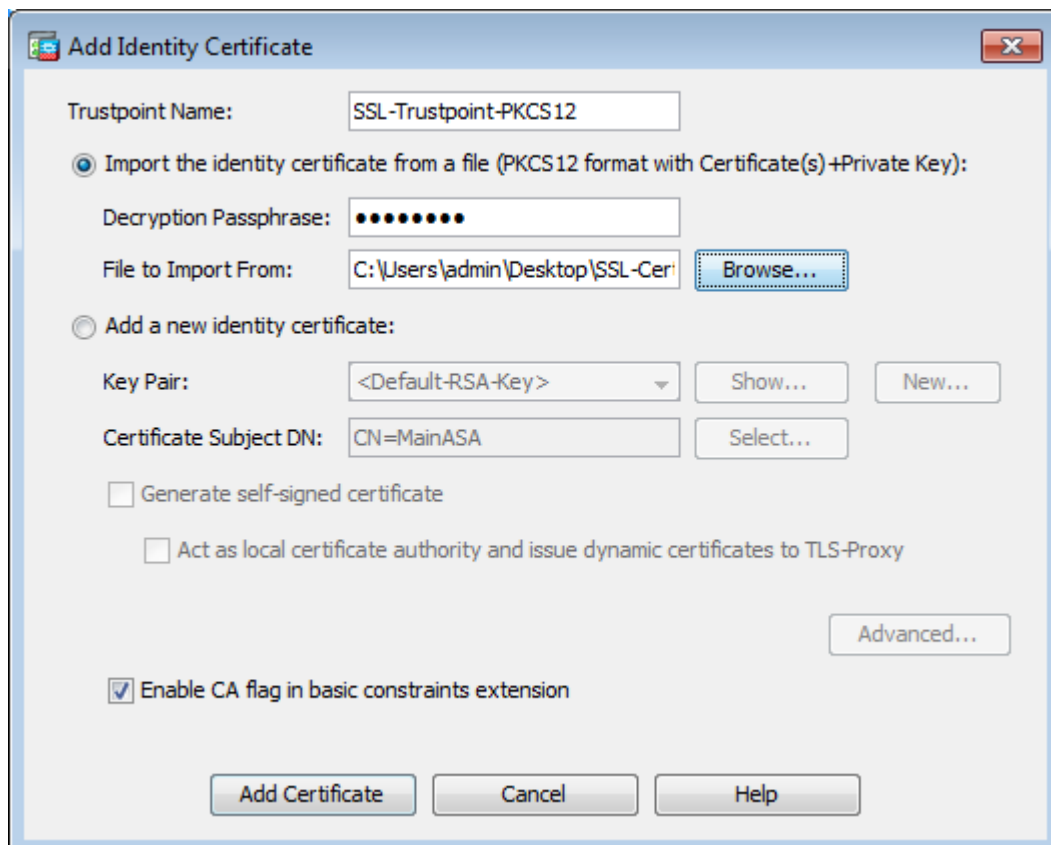
Use this command in order to import the certificate via CLI to the target ASA:

```
<#root>
```

```
ASA(config)#
```

```
crypto ca import <trust-point-name> pkcs12 <passphrase>
```

ASDM configuration:



This can also be done via the Backup/Restore feature on the ASDM with these steps:

1. Log in to the ASA via ASDM and choose **Tools > Backup Configuration**.
2. Backup All Configuration or just the Identity certificates.
3. On the target ASA, open the ASDM and choose **Tools > Restore Configuration**.

2. How to generate SSL certificates for use with VPN Load Balancing ASAs?

There are multiple methods that can be used to set up ASAs with SSL certificates for a VPN Load Balancing environment.

1. Use a single Unified Communications/Multiple Domains Certificate (UCC) which has the load-balancing FQDN as the DN and each of the ASA FQDNs as a separate Subject Alternative Name (SAN). There are several well known CAs like GoDaddy, Entrust, Comodo and others that support such certificates. When you choose this method, it is important to remember that the ASA currently does not support the creation of a CSR with multiple SAN fields. This has been documented in the enhancement Cisco bug ID [CSCso70867](#). In this case there are two options to generate the CSR
 - a. Via the CLI or ASDM. When the CSR is submitted to the CA, add in the multiple SANs on the CA portal itself.
 - b. Use OpenSSL to generate the CSR and include the multiple SANs in the openssl.cnf file.

Once the CSR has been submitted to the CA and the certificate generated, import this PEM certificate to the ASA that generated the CSR. Once done, export and import this certificate in the PKCS12 format onto the other member ASAs.

2. Use a Wildcard certificate. This is a less secure and flexible method when compared to a UC certificate. In the case that the CA does not support UC certificates, a CSR is generated either on the CA or with OpenSSL where the FQDN is on the form of *.domain.com. Once the CSR has been submitted to the CA and the certificate generated, import the PKCS12 certificate to all the ASAs in the cluster.
3. Use a separate certificate for each of the member ASAs and the for the load-balancing FQDN. This is the least effective solution. The certificates for each of the individual ASAs can be created as shown in this document. The certificate for the VPN Loadbalancing FQDN is created on one ASA and exported and imported as a PKCS12 certificate onto the other ASAs.

3. Do the certificates need to be copied from the Primary ASA to the Secondary ASA in an ASA failover pair?

There is no need to manually copy the certificates from the Primary to Secondary ASA as the certificates are synced between the ASAs as long as Stateful Failover is configured. If on initial setup of failover, the certificates are not seen on the Standby device, issue the command **write standby** in order to force a sync.

4. If ECDSA keys are used, is the SSL certificate generation process different?

The only difference in configuration is the keypair generation step, where an ECDSA keypair is generated instead of an RSA keypair. The rest of the steps remain the same. The CLI command to generate ECDSA keys are shown here:

```
<#root>
```

```
MainASA(config)#
```

```
cry key generate ecdsa label SSL-Keypair elliptic-curve 256
```

INFO: The name for the keys will be: SSL-Keypair
Keypair generation process begin. Please wait...

Troubleshoot

Troubleshoot Commands

These debug commands are to be collected on the CLI in the case of an SSL Certificate Installation failure:

debug crypto ca 255

debug crypto ca messages 255

debug crypto ca transactions 255

Common Issues

Untrusted certificate warning with a valid third-party SSL certificate on the external interface on ASA with 9.4(1) and later.

Solution: This issue presents itself when an RSA keypair is used with the certificate. On ASA versions from 9.4(1) onwards, all the ECDSA and RSA ciphers are enabled by default and the strongest cipher (usually an ECDSA cipher) is used for negotiation. If this happens, the ASA presents a Self-Signed certificate instead of the currently configured RSA-based certificate. There is an enhancement in place to change the behaviour when an RSA-based certificate is installed on an interface and is tracked by Cisco bug ID [CSCuu02848](#).

Recommended Action: Disable ECDSA ciphers with these CLI commands:

```
ssl cipher tlsv1.2 custom "AES256-SHA:AES128-SHA:DHE-RSA-AES256-SHA:DHE-RSA-AES128-SHA:  
DES-CBC3-SHA:DES-CBC-SHA:RC4-SHA:RC4-MD5"
```

Or, with the ASDM, navigate to **Configuration > Remote Access VPN > Advanced**, and choose **SSL Settings**. Under the Encryption section, select **tlsv1.2 Cipher version** and edit it with the custom string **AES256-SHA:AES128-SHA:DHE-RSA-AES256-SHA:DHE-RSA-AES128-SHA:DES-CBC3-SHA:DES-CBC-SHA:RC4-SHA:RC4-MD5**

Appendix

Appendix A: ECDSA or RSA

The ECDSA algorithm is a part of the Elliptic curve cryptography (ECC) and uses an equation of an elliptic curve to generate a Public Key whereas the RSA algorithm uses the product of two primes plus a smaller number to generate the Public Key. This means that with ECDSA the same level of security as RSA can be achieved, but with smaller keys. This reduces computation time and increases the connection times for sites that use ECDSA certificates.

The document on [Next Generation Cryptography and the ASA](#) provides more in-depth information.

Appendix B: Use OpenSSL to Generate a PKCS12 Certificate from an Identity Certificate, CA Certificate, and Private Key

1. Verify that the OpenSSL is installed on the system that this process is run on. For Mac OSX and GNU/Linux users, this is installed by default.
2. Switch to a valid directory.

On Windows: By default, the utilities are installed in C:\Openssl\bin. Open a command prompt in this location.

On Mac OSX/Linux: Open the Terminal window in the directory needed to create the PKCS12 certificate.

3. In the directory mentioned in the previous step, save the private key (privateKey.key), identity certificate (certificate.crt) and root CA certificate chain (CACert.crt) files.

Combine the private key, identity certificate and the root CA certificate chain into a PKCS12 file. Enter a passphrase to protect your PKCS12 certificate.

```
strong> openssl pkcs12 -export -out certificate.pfx -inkey privateKey.key -in certificate.crt -cer
```

4. Convert the PKCS12 certificate generated to a Base64 encoded certificate:
<#root>

```
openssl base64 -in certificate.pfx -out certificate.p12
```

Next, import the certificate that was generated in the last step for use with SSL.

Related Information

- [ASA 9.x Configuration Guide - Configure Digital Certificates](#)
- [How to obtain a Digital Certificate from a Microsoft Windows CA with ASDM on an ASA](#)
- [Technical Support & Documentation - Cisco Systems](#)