



Enterprise Chat and Email Browser Settings Guide, Release 12.5(1)

For Unified Contact Center Enterprise

First Published: January, 2020

Americas Headquarters

Cisco Systems, Inc.
170 West Tasman Drive
San Jose, CA 95134-1706
USA
<https://www.cisco.com>
Tel: 408 526-4000
800 553-NETS (6387)
Fax: 408 527-0883

THE SPECIFICATIONS AND INFORMATION REGARDING THE PRODUCTS IN THIS MANUAL ARE SUBJECT TO CHANGE WITHOUT NOTICE. ALL STATEMENTS, INFORMATION, AND RECOMMENDATIONS IN THIS MANUAL ARE BELIEVED TO BE ACCURATE BUT ARE PRESENTED WITHOUT WARRANTY OF ANY KIND, EXPRESS OR IMPLIED. USERS MUST TAKE FULL RESPONSIBILITY FOR THEIR APPLICATION OF ANY PRODUCTS.

THE SOFTWARE LICENSE AND LIMITED WARRANTY FOR THE ACCOMPANYING PRODUCT ARE SET FORTH IN THE INFORMATION PACKET THAT SHIPPED WITH THE PRODUCT AND ARE INCORPORATED HEREIN BY THIS REFERENCE. IF YOU ARE UNABLE TO LOCATE THE SOFTWARE LICENSE OR LIMITED WARRANTY, CONTACT YOUR CISCO REPRESENTATIVE FOR A COPY.

The Cisco implementation of TCP header compression is an adaptation of a program developed by the University of California, Berkeley (UCB) as part of UCBs public domain version of the UNIX operating system. All rights reserved. Copyright 1981, Regents of the University of California.

NOTWITHSTANDING ANY OTHER WARRANTY HEREIN, ALL DOCUMENT FILES AND SOFTWARE OF THESE SUPPLIERS ARE PROVIDED "AS IS" WITH ALL FAULTS. CISCO AND THE ABOVE-NAMED SUPPLIERS DISCLAIM ALL WARRANTIES, EXPRESSED OR IMPLIED, INCLUDING, WITHOUT LIMITATION, THOSE OF MERCHANTABILITY, FITNESS FOR A PARTICULAR PURPOSE AND NONINFRINGEMENT OR ARISING FROM A COURSE OF DEALING, USAGE, OR TRADE PRACTICE.

IN NO EVENT SHALL CISCO OR ITS SUPPLIERS BE LIABLE FOR ANY INDIRECT, SPECIAL, CONSEQUENTIAL, OR INCIDENTAL DAMAGES, INCLUDING, WITHOUT LIMITATION, LOST PROFITS OR LOSS OR DAMAGE TO DATA ARISING OUT OF THE USE OR INABILITY TO USE THIS MANUAL, EVEN IF CISCO OR ITS SUPPLIERS HAVE BEEN ADVISED OF THE POSSIBILITY OF SUCH DAMAGES.

Any Internet Protocol (IP) addresses and phone numbers used in this document are not intended to be actual addresses and phone numbers. Any examples, command display output, network topology diagrams, and other figures included in the document are shown for illustrative purposes only. Any use of actual IP addresses or phone numbers in illustrative content is unintentional and coincidental.

Cisco and the Cisco logo are trademarks or registered trademarks of Cisco and/or its affiliates in the U.S. and other countries. To view a list of Cisco trademarks, go to <https://www.cisco.com/go/trademarks>. Third-party trademarks mentioned are the property of their respective owners. The use of the word partner does not imply a partnership relationship between Cisco and any other company. (1110R)

Enterprise Chat and Email Browser Settings Guide: For Unified Contact Center Enterprise. January 7, 2020

© 2016-2020 Cisco Systems, Inc. All rights reserved.

Contents

About This Guide	4
Related Documents	4
Communications, Services, and Additional Information	4
Cisco Bug Search Tool	5
Field Alerts and Field Notices	5
Documentation Feedback	5
Document Conventions.	5
Configuring Your Browser	6
Configuring Internet Explorer 11	6
Configuring Pop-Up Blockers.	14
Configuring Java on Your Desktop	14
Logging In.	15

Welcome to Enterprise Chat and Email, multichannel interaction software used by businesses all over the world to build and sustain customer relationships. A unified suite of the industry's best applications for chat and email interaction management, it is the backbone of many innovative contact centers and customer service organizations.

About This Guide

Enterprise Chat and Email Browser Settings Guide helps you set up your web browser, and Java for Enterprise Chat and Email (ECE). Users must configure their desktops according to the procedures described in this guide before logging in to the system.



Important: The tasks listed in this guide do not need to be performed on agent desktops.

Related Documents

The latest versions of all Cisco documentation can be found online at <https://www.cisco.com>

Subject	Link
Complete documentation for Enterprise Chat and Email, for both Cisco Unified Contact Center Enterprise (UCCE) and Cisco Packaged Contact Center Enterprise (PCCE)	https://www.cisco.com/c/en/us/support/customer-collaboration/cisco-enterprise-chat-email/tsd-products-support-series-home.html

Communications, Services, and Additional Information

- ▶ To receive timely, relevant information from Cisco, sign up at [Cisco Profile Manager](#).
- ▶ To get the business impact you're looking for with the technologies that matter, visit [Cisco Services](#).
- ▶ To submit a service request, visit [Cisco Support](#).
- ▶ To discover and browse secure, validated enterprise-class apps, products, solutions and services, visit [Cisco Marketplace](#).
- ▶ To obtain general networking, training, and certification titles, visit [Cisco Press](#).
- ▶ To find warranty information for a specific product or product family, access [Cisco Warranty Finder](#).

Cisco Bug Search Tool

[Cisco Bug Search Tool](#) (BST) is a web-based tool that acts as a gateway to the Cisco bug tracking system that maintains a comprehensive list of defects and vulnerabilities in Cisco products and software. BST provides you with detailed defect information about your products and software.

Field Alerts and Field Notices

Cisco products may be modified or key processes may be determined to be important. These are announced through use of the Cisco Field Alerts and Cisco Field Notices. You can register to receive Field Alerts and Field Notices through the Product Alert Tool on Cisco.com. This tool enables you to create a profile to receive announcements by selecting all products of interest.

Log into www.cisco.com and then access the tool at <https://www.cisco.com/cisco/support/notifications.html>

Documentation Feedback

To provide comments about this document, send an email message to the following address:
contactcenterproducts_docfeedback@cisco.com

We appreciate your comments.

Document Conventions

This guide uses the following typographical conventions.

Convention	Indicates
<i>Italic</i>	Emphasis, or the title of a published document.
Bold	Labels of items on the user interface, such as buttons, boxes, and lists. Or, text that must be typed by the user.
<code>Monospace</code>	A file name or command. Or, text that must be typed by the user.
<i>Variable</i>	User-specific text, provided by the user.

Document conventions

Configuring Your Browser

You can use a 32-bit or 64-bit version of Internet Explorer to access the ECE application.

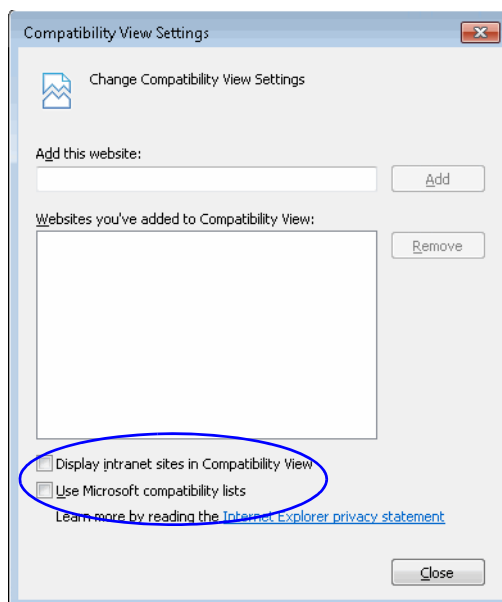
This section describes the procedures for configuring the web browser. It includes:

- ▶ “Configuring Internet Explorer 11” on page 6
- ▶ “Configuring Pop-Up Blockers” on page 14

Configuring Internet Explorer 11

To configure your browser for ECE:

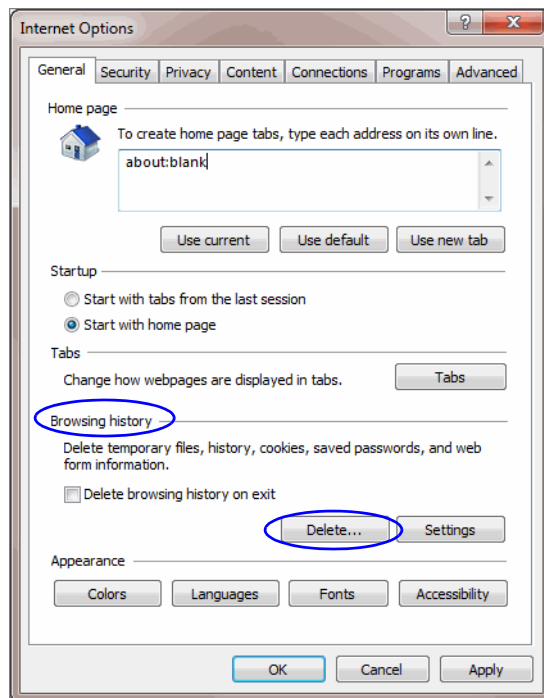
1. Open Internet Explorer.
2. On the Internet Explorer toolbar, click the **Help** button and select **About Internet Explorer**.
3. In the About Internet Explorer window, verify that the version number is **11.0.x**. If you need to get the correct version, download it from the Microsoft web site.
4. On the Internet Explorer toolbar, click the **Tools** button and select **Compatibility View Settings**.
5. In the Compatibility View Settings window that appears, do the following:
 - a. Uncheck the following options to turn off the compatibility view mode.
 - Display intranet sites in Compatibility View
 - Use Microsoft compatibility lists



Turn off the compatibility view settings

6. On the Internet Explorer toolbar, click the **Tools** button and select **Internet Options**.
The Internet Options window appears.

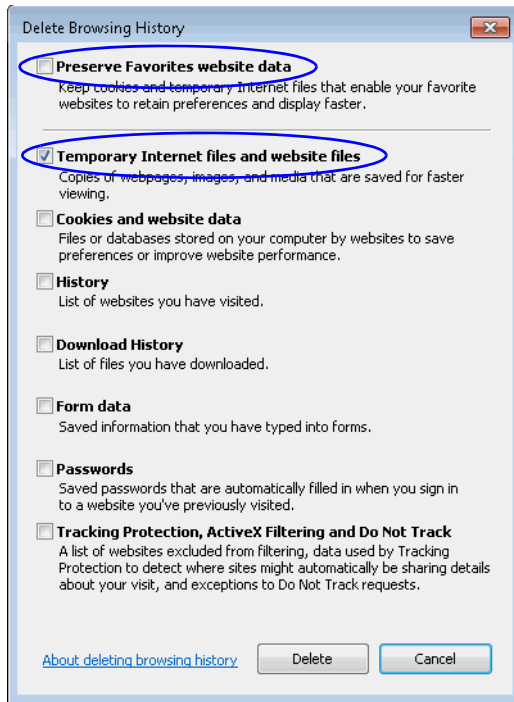
7. On the General tab, do the following:
 - a. In the Browsing history section, click the **Delete** button.



Click the **Delete** button

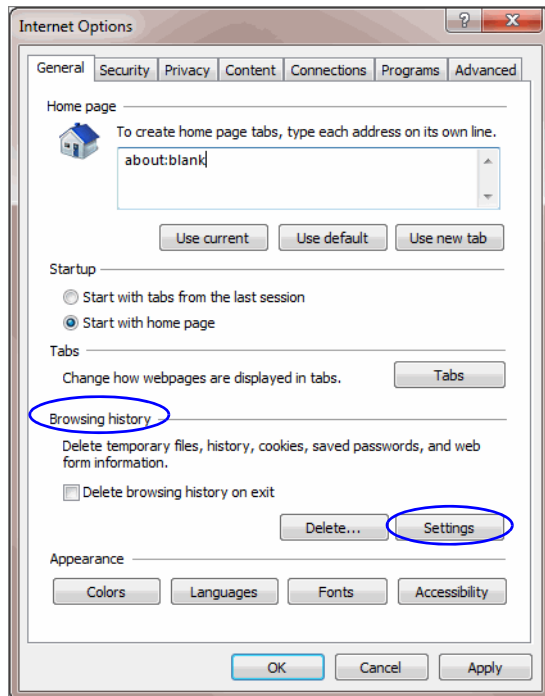
- b. In the Delete Browsing History window, do the following:
 - i. Uncheck the **Preserve Favorites website data** option.

- ii. Select the **Temporary Internet files and Website files** option and click the **Delete** button.



Delete temporary internet files

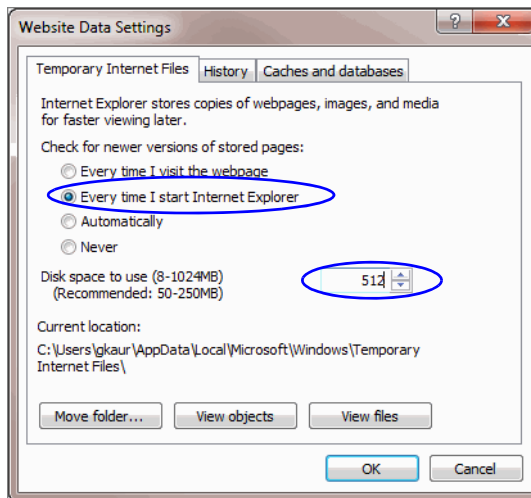
- c. In the Browsing history section, click the **Settings** button.



*Click the **Settings** button*

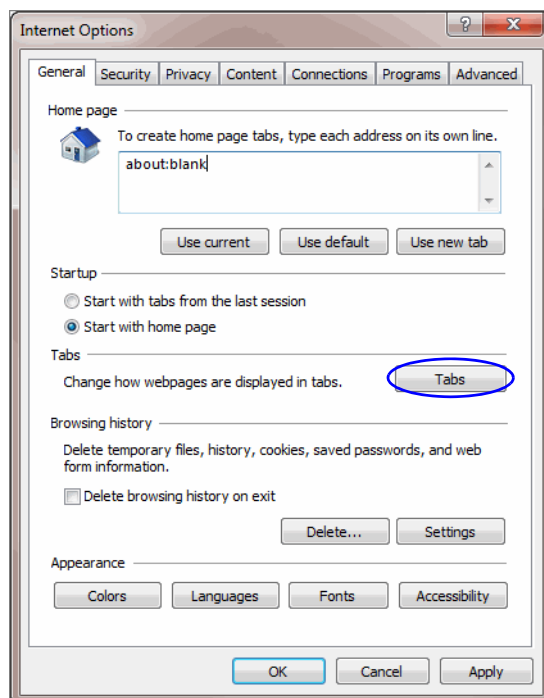
- d. In the Settings window, in the Temporary Internet files section, set the following options and click **OK**.

- i. Select **Every time I start Internet Explorer** as the option for checking newer versions of stored pages.
- ii. Specify at least 512 MB as the disk space to use for temporary internet files.



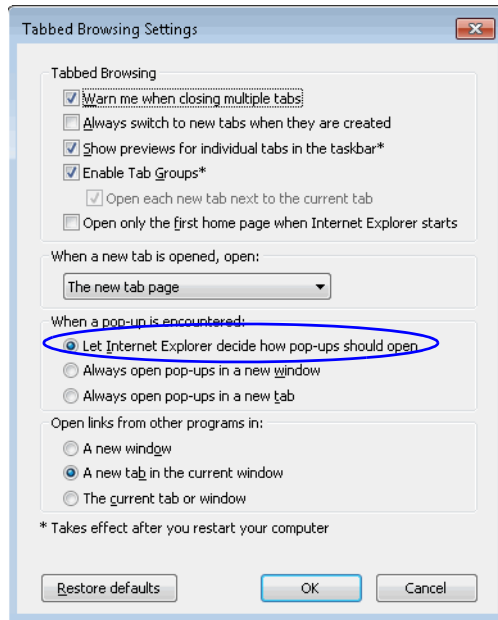
Configure temporary internet file settings

- e. In the Tabs section, click the **Tabs** button.



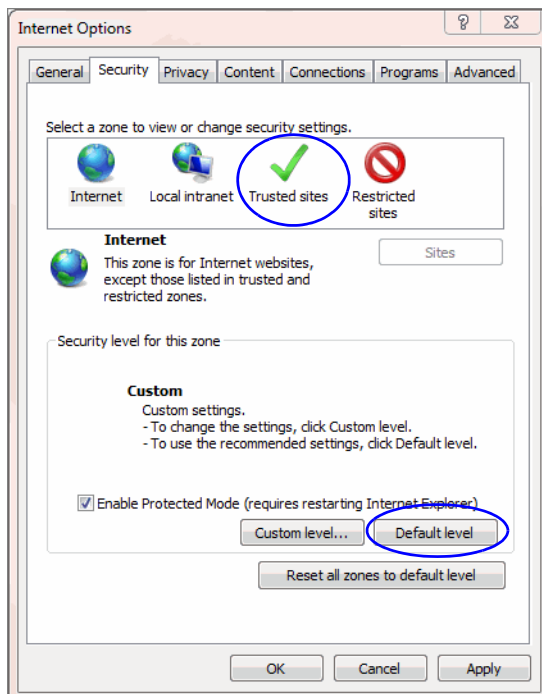
*Click the **Settings** button*

- f. In the Settings window, in the When a pop up is encountered: section, select the **Let Internet Explorer decide how pop-ups should open** option and click OK.



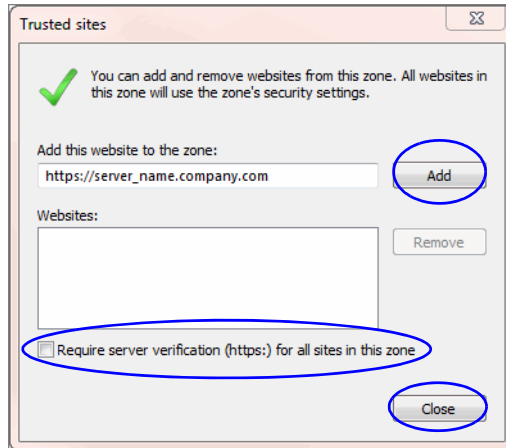
Configure the When a pop up is encountered: setting

8. On the Security tab, perform the following tasks:
- Select the **Trusted sites** zone, and restore default settings by clicking the **Default level** button.
If the **Default level** button is disabled, then default settings are already in use.



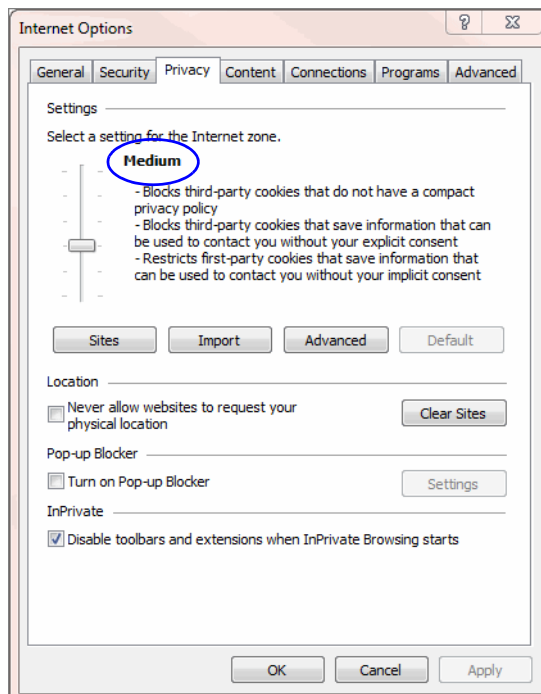
Configure trusted sites settings

- b. Then, in the **Trusted sites** zone and click the **Sites** button.
- c. In the Trusted sites window, perform the following tasks:
 - i. Clear the **Require server verification (https:) for all sites in this zone** option.
 - ii. In the **Add this website to the zone** text box, type the Internet address for the application and click the **Add** button. Click **Close**.



Add the URL for the application to the trusted web sites list

9. On the Privacy tab, perform the following tasks:
 - a. In the Settings section, set the Cookies setting to **Medium**.

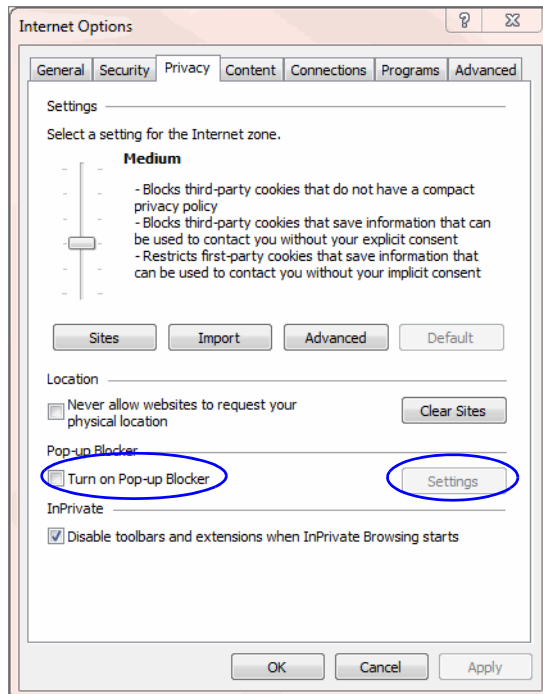


Configure cookie setting

- b. In the Pop-up Blocker section, check if the pop-up blocker is turned on. If the pop-up blocker is on, click the **Settings** button and in the Pop-up Blocker Settings window, add the link of the ECE application. Alternatively, you can clear the **Turn on Pop-up Blocker** option.



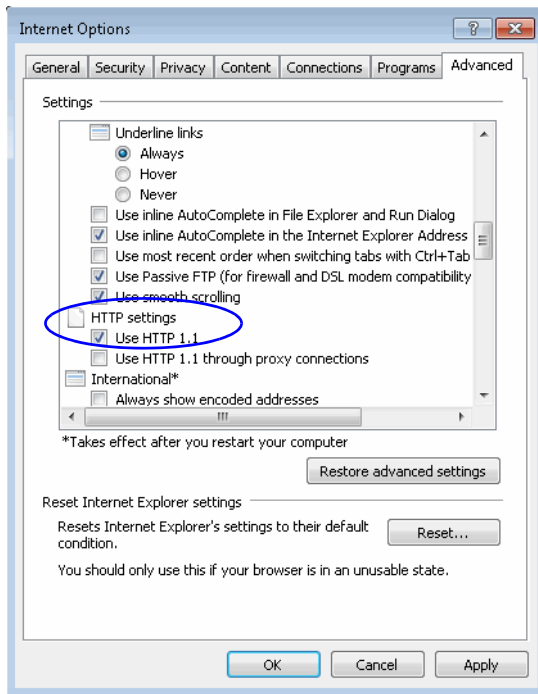
Important: If you use additional pop-up blockers, you must configure them to allow pop-up windows for the ECE URL (see “Configuring Pop-Up Blockers” on page 14).



Configure pop-up blocker setting

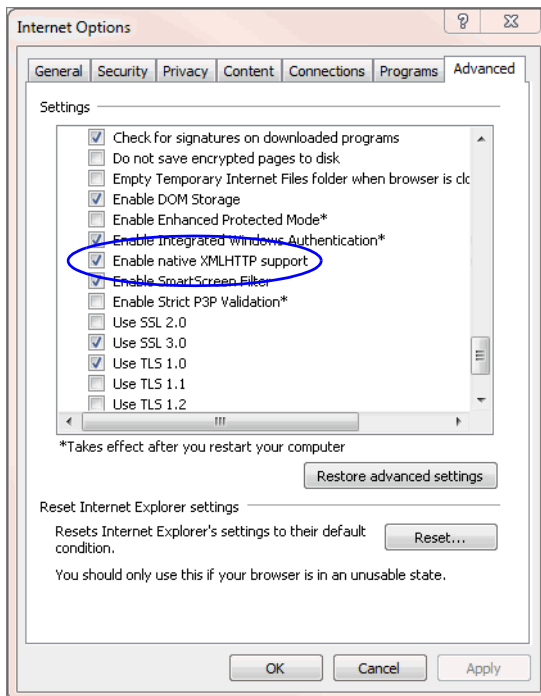
10. On the Advanced tab, perform the following tasks:

- a. In the HTTP Settings section, ensure that the **Use HTTP 1.1** option is selected. If you cannot use HTTP 1.1 on your desktop, IIS compression settings must be modified on the web server. Contact your system administrator for help.



Verify HTTP 1.1 setting

- b. In the Security section, ensure that the **Enable Native xmlHTTP support** option is selected.



Verify the Native xmlHTTP support setting

11. Click **OK** in the Internet Options window to close it.

Configuring Pop-Up Blockers

- ▶ If you use external pop-up blockers such as those available in the Google and Yahoo toolbars, configure them to allow pop-up windows for your ECE installation URL.

Configuring Java on Your Desktop



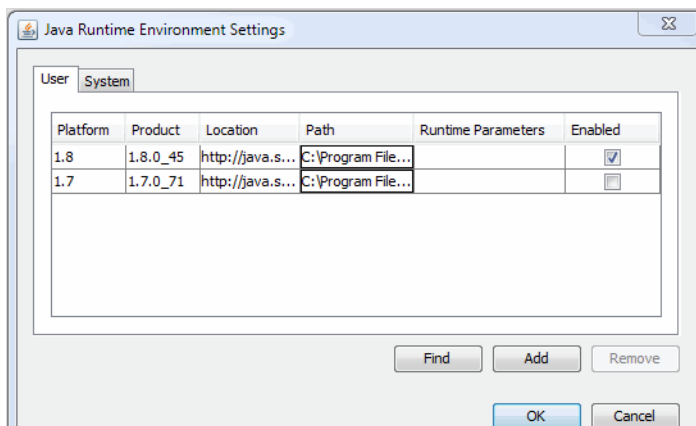
Important: Java needs to be installed only on user desktops that will be used for administering Workflows (from the Administration Console).

From the user desktop, ensure that the supported version of Java 1.8 is being used. For the list of supported versions, see the *System Requirements for Enterprise Chat and Email*.

For 64-bit browser, you must have the 64-bit JRE enabled on your system. If you are using a 32-bit browser, you must have the 32-bit JRE (x86) enabled on your system. In 64-bit Operating Systems, the Java Control Panel does not display 32-bit versions of JRE. Follow the steps on [page 15](#) to ensure that you have the correct 32-bit JRE version.

To configure Java on your desktop:

1. Close all open Internet Explorer browsers.
2. Go to **Start > Control Panel**.
3. Double-click **Java**.
4. In the Java Control Panel window, go to the Java tab and click the **View** button.
5. In the Java Runtime Environment Settings window, verify that the supported version of Java 1.8 is enabled.

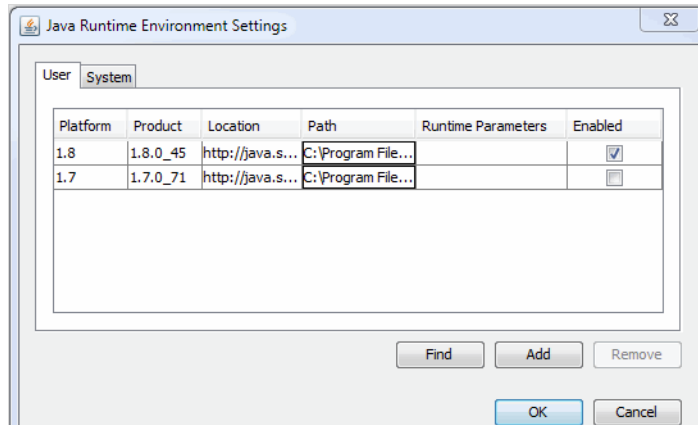


Verify that the correct version of Java is enabled

6. Click **OK** to close the window.

To configure Java on desktops that have 32-bit Internet Explorer browsers installed on 64-bit Operating Systems:

1. Close all open Internet Explorer browsers.
2. Go to **C:\Program Files (x86)\Java\jre1.8.0_45\bin**
3. Double-click **javacpl.exe**.
4. In the Java Control Panel window, go to the Java tab and click the **View** button.
5. In the Java Runtime Settings window that opens, verify that the supported version of Java 1.8 is enabled.



Verify that the correct version of Java is enabled

6. Click OK to close the window.

Logging In

The application allows administrators to log in to the application using the same user account from different browser sessions and desktops.

To log in to the business partition from your browser window:

1. Type the URL provided by your system administrator in the browser. The URL is typically in the following format: `https://Web_Server_Name or Load_Balancer_Name/Partition_Name`
2. Click the section where you want to go. Options are:
 - Management and Authoring Consoles
 - Services and Hosts
3. In the Login window, type your user name and password.
4. Click the **Log In** button.