

Date: Jan 31, 2022

This is a companion document to [Cisco Prime Network 5.0 Supported VNEs](#). It contains the following:

- Information about new or enhanced Virtual Network Elements (VNE) drivers, new modules, new technologies and new software versions supported after Prime Network 5.0 release.
- Device support information for Change and Configuration Management.
- Device support information for command scripts (scripts launched by right-clicking an NE in Prime Network Vision and choosing Commands).

## Table of Contents

<b>Which Jar File is a Device Using? .....</b>	<b>4</b>
<b>New Support for Cisco Routers.....</b>	<b>6</b>
Cisco ASR 10XX Series Routers — Additional Support.....	6
Cisco ASR 901 Routers — Additional Support.....	8
Cisco ASR 902 Routers — Additional Support.....	8
Cisco ASR 903 Routers — Additional Support.....	8
Cisco ASR 920 Routers — Additional Support.....	9
Cisco ASR 5000 Series Routers —Additional Support.....	10
Cisco ASR 9000 Series Routers —Additional Support.....	11
Cisco Network Convergence System 540 Series Routers (NCS 540) —Additional Support.....	12
Cisco Network Convergence System 560 Series Routers (NCS 560) —Additional Support.....	13
Cisco Network Convergence System 5500 Series Routers (NCS 5500) —Additional Support .....	14
Cisco Network Convergence System 6000 Series Routers – Additional Support.....	17
Cisco ME 3600X Ethernet Access Switch.....	18
Cisco ISR 892 Routers —Additional Support.....	18
Cisco ISR 2000 Routers —Additional Support .....	18
Cisco ISR 4000 Routers —Additional Support.....	19
Cisco 7606 Series Routers.....	20
Cisco CRS Carrier Routing System—Additional Support .....	20
Cisco IOS-XRv9k—Additional Support .....	20

<b>New Support for Firewall Device .....</b>	<b>20</b>
Cisco ASA — Additional Support .....	20
Cisco ASA5585-X Series Switches — Additional Support.....	20
Cisco ASA5516-X Series Switches — Additional Support.....	21
Cisco ASA5512-X Series Switches — Additional Support .....	21
Cisco ASA5515-X Series Switches — Additional Support .....	21
Cisco ASA5525 Series Switches — Additional Support .....	21
Cisco ASA5545 Series Switches — Additional Support .....	21
Cisco ASA5555 Series Switches — Additional Support .....	21
Cisco ASA5585-X Series Switches — Additional Support .....	22
<b>New Support for Cisco Switches .....</b>	<b>22</b>
Cisco Industrial Ethernet 2K — Additional Support .....	22
Cisco Industrial Ethernet 3K — Additional Support .....	23
Cisco Industrial Ethernet 4K — Additional Support .....	24
Cisco 2500 Series Connected Grid Switches—Additional Support .....	26
Cisco Catalyst 4500-X Series Switches — Additional Support.....	26
Cisco Catalyst 3850 Series Switches — Additional Support.....	27
Cisco Catalyst 3650 Series Switches — Additional Support .....	27
Cisco Catalyst 2960 Series Switches—Additional Support.....	28
Cisco Nexus 5000 Series Switches—Additional Support .....	28
Cisco Nexus 7000 Series Switches—Additional Support .....	29
Cisco Nexus 9000 Series Switches—Additional Support .....	29
Cisco Nexus 3000 Series Switches—Additional Support .....	31
Cisco Catalyst 9300 Series Switches — Additional Support.....	32
<b>New Support for VMware Devices.....</b>	<b>33</b>
VMware VirtualCenter Server — Additional Support.....	33
<b>New Support for Data Center .....</b>	<b>33</b>
Cisco UCS — Additional Support .....	33
Cisco UCS C Series Rack Mount Server — Additional Support .....	34
<b>New Support for Events and Miscellaneous Support.....</b>	<b>34</b>
Supported Traps.....	34
Cisco ASR 5000—Supported Traps.....	34
Cisco IOS and Cisco IOS - XE— Supported Traps .....	38

Cisco ASR 903 — Supported Traps .....	38
Cisco UCS — Supported Traps.....	38
Cisco ASR 9000 — Supported Traps .....	38
Supported Syslogs .....	38
Cisco Catalyst 4500-X — Supported Syslogs.....	38
Cisco ASR 9000— Supported Syslogs.....	40
Cisco Network Convergence System 540 Series Routers (NCS 540) — Supported Syslogs.....	41
Cisco Network Convergence System 5500 Series Routers (NCS 5500) — Supported Syslogs .....	41
Cisco ISR 39xx— Supported Syslogs .....	41
Cisco ISR 29xx— Supported Syslogs .....	41
<b>Support for Change and Configuration Management in 5.0 .....</b>	<b>42</b>
Industrial Ethernet 2K Device.....	42
Industrial Ethernet 3K Device.....	43
Industrial Ethernet 4K Device.....	43
Cisco Network Convergence System 540 Series Routers (NCS 540) .....	44
Cisco Network Convergence System 5500 Series Routers (NCS 5500).....	45
Cisco Catalyst 9300 Series Switches.....	45

## Obtaining the New and Enhanced Device Drivers

New and enhanced VNE support for multiple device families is provided through Prime Network Device Packages (DPs) and Point Patches, as they become available. To obtain this additional support, do the following:

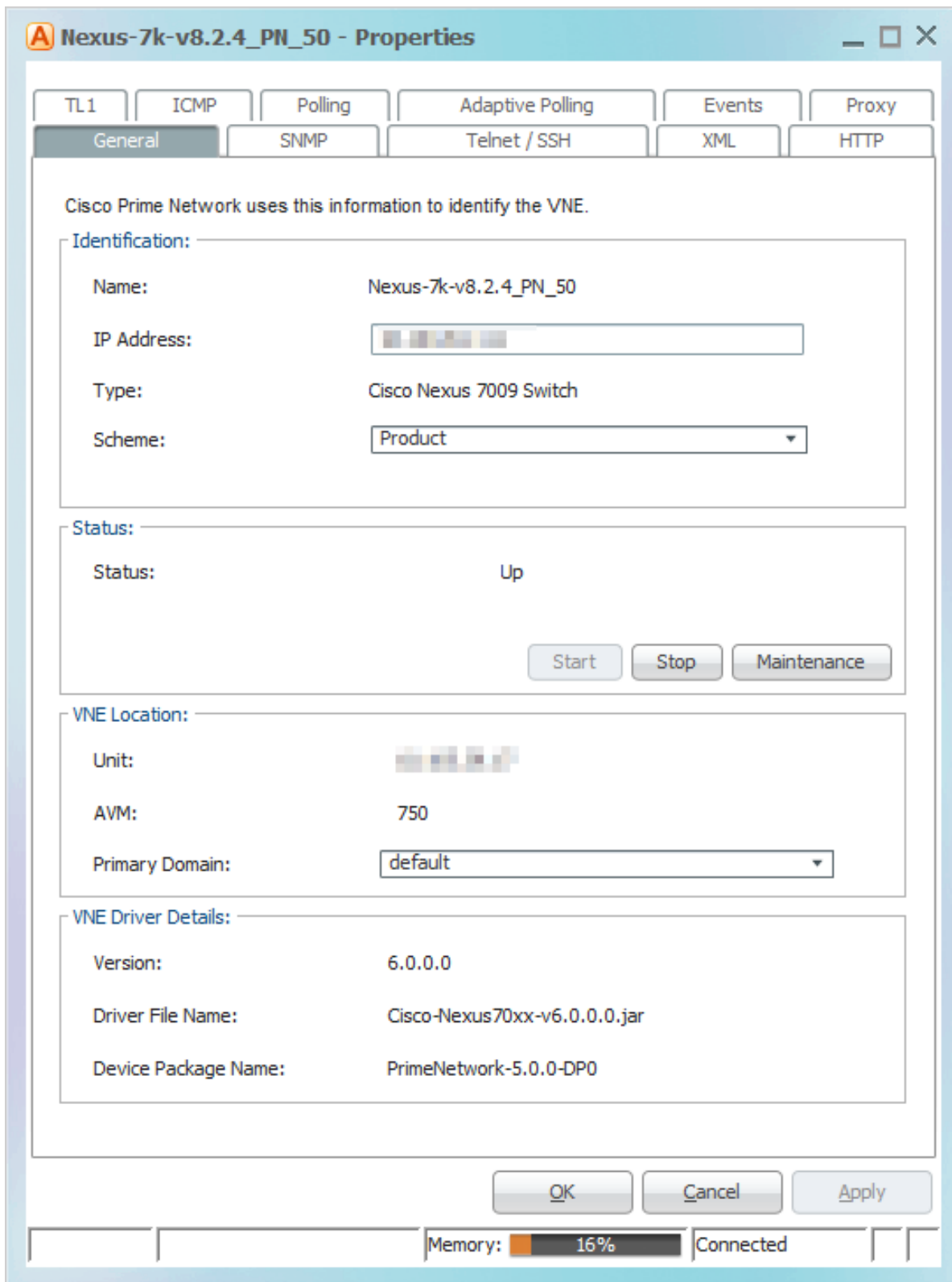
- For Device Packages (DPs), log into Cisco.com and go to the [Cisco Prime Network Software Download site](#).
- For Point Patches, log into Cisco.com and go to the [Cisco Prime Network Software Download site](#).

Once you download the new support, you can install on Cisco Prime Network 5.0. DP contents are described in this document (and in the Readme that accompanies the download). Point Patch contents are described in the Release Note or Readme available on the download site.

## Which Jar File is a Device Using?

To identify the jar file that is being used by any devices that are managed by Prime Network, open the Administration client and check the properties of the VNE. In the General tab, the driver file name is displayed.

The following example shows a Nexus 7000 device that is using the driver file Cisco-Nexus70xx-v6.0.0.0.jar, which was provided in the release of Prime Network 5.0(DP0).



With this information, you can check if a newer version is available and what new support it provides (see the “New Support” sections in this document).

## New Support for Cisco Routers

### Cisco ASR 10XX Series Routers — Additional Support

- **Cisco ASR 1000 Series — Supported Software Versions**

Software Version	Added in:
IOS-XE 16.03.06	DP 1807
IOS-XE 16.12.3	DP 2009
IOS-XE 16.12.5	DP 2105
IOS-XE 17.3.3	DP 2105

- **Cisco ASR 1001 Series—Supported Software Versions**

Software Version	Added in:
IOS-XE 16.03.06	DP 1807
IOS-XE 16.12.3	DP 2009
IOS-XE 16.12.5	DP 2105
IOS-XE 17.3.3	DP 2105

- **Cisco ASR 1001 - X Series—Supported Software Versions**

Software Version	Added in:
IOS-XE 16.03.06	DP 1807
IOS-XE 16.12.3	DP 2009
IOS-XE 16.12.5	DP 2105
IOS-XE 17.3.3	DP 2105

- **Cisco ASR 1001 - HX Series—Supported Software Versions**

Software Version	Added in:
IOS-XE 16.03.06	DP 1807
IOS-XE 16.12.3	DP 2009
IOS-XE 16.12.5	DP 2105
IOS-XE 17.3.3	DP 2105

- **Cisco ASR 1002 Series—Supported Software Versions**

Software Version	Added in:
IOS-XE 16.03.06	DP 1807
IOS-XE 16.12.3	DP 2009
IOS-XE 16.12.5	DP 2105
IOS-XE 17.3.3	DP 2105

- **Cisco ASR 1002-X Series—Supported Software Versions**

Software Version	Added in:
IOS-XE 16.03.06	DP 1807
IOS-XE 16.12.3	DP 2009
IOS-XE 16.12.5	DP 2105
IOS-XE 17.3.3	DP 2105

- **Cisco ASR 1002 - HX Series—Supported Software Versions**

Software Version	Added in:
IOS-XE 16.03.06	DP 1807
IOS-XE 16.12.3	DP 2009
IOS-XE 16.12.5	DP 2105
IOS-XE 17.3.3	DP 2105

- **Cisco ASR 1004 Series—Supported Software Versions**

Software Version	Added in:
IOS-XE 16.03.06	DP 1807
IOS-XE 16.12.3	DP 2009
IOS-XE 16.12.5	DP 2105
IOS-XE 17.3.3	DP 2105

- **Cisco ASR 1006 Series—Supported Software Versions**

Software Version	Added in:
IOS-XE 16.03.06	DP 1807
IOS-XE 3.16.8S/15.5(3)S8	DP 1907
IOS-XE 16.12.3	DP 2009

Software Version	Added in:
IOS-XE 16.12.5	DP 2105
IOS-XE 17.3.3	DP 2105

- **Cisco ASR 1006-X Series—Supported Software Versions**

Software Version	Added in:
IOS-XE 16.03.06	DP 1807
IOS-XE 16.12.3	DP 2009
IOS-XE 16.12.5	DP 2105
IOS-XE 17.3.3	DP 2105

### Cisco ASR 901 Routers — Additional Support

- **Cisco ASR 901 — Supported Software Versions**

Software Version	Added in:
IOS 3.18 5SP	DP 1903
IOS 15.6(2) SP8 / 3.18 SP8	DP 2005

### Cisco ASR 902 Routers — Additional Support

- **Cisco ASR 902 — Supported Software Versions**

Software Version	Added in:
IOS 16.9.2	DP 1905
*IOS 17.1.1	DP 2001




---

\*Note: VNE discovery using SSH is not supported due to stronger encryptions enforced in the IOS 17.1.1 version on the ASR 902 device.

---

### Cisco ASR 903 Routers — Additional Support

- **Cisco ASR 903 — Supported Software Versions**

Software Version	Added in:
IOS XE 3.18 5SP / 15.6(2) SP5	DP 1903



Software Version	Added in:
IOS 16.9.3	DP 1907
IOS 16.12.1	DP 1911
*IOS 17.1.1	DP 1911
IOS 16.12.3	DP 2009
IOS 16.12.5	DP 2105
*IOS 17.3.3	DP 2107




---

\*Note: VNE discovery using SSH is not supported due to stronger encryptions enforced in the IOS 17.1.1 and IOS 17.3.3 version on the ASR 903 device.

---

### Cisco ASR 920 Routers — Additional Support

- **Cisco ASR 920 — Supported Software Versions**

Software Version	Added in:
IOS-XE 3.18.4SP / 15.6(2)SP4	DP 1809
IOS XE 3.18 5SP / 15.6(2) SP5	DP 1903
IOS 16.9.3	DP 1907
IOS 16.11.1a	DP 1907
IOS 16.12.1	DP 1911
*IOS 17.1.1	DP 1911
IOS 16.12.5	DP 2105




---

\*Note: VNE discovery using SSH is not supported due to stronger encryptions enforced in the IOS 17.1.1 version on the ASR 920 device.

---

- **Cisco ASR 920 — Supported Network Elements**

NE Type	Product Name	SysOID	Added in:
ASR-920-12CZ-A	Cisco ASR 920-12CZ-A Router	.1.3.6.1.4.1.9.1.2157	DP 1907
ASR 920-12SZ-IM	Cisco ASR 920-12SZ-IM Router	.1.3.6.1.4.1.9.1.2247	DP 1907
ASR-920-24SZ-IM	Cisco ASR 920-24SZ-IM Router	.1.3.6.1.4.1.9.1.2100	DP 1907
ASR 920-24SZ-M	Cisco ASR 920-24SZ-M Router	.1.3.6.1.4.1.9.1.2102	DP 1907

ASR-920U-12SZ-IM	Cisco ASR 920-10SZ-PD Router	.1.3.6.1.4.1.9.1.2504	DP 1907
ASR-920-10SZ-PD	Cisco ASR 920-10SZ-PD Router	.1.3.6.1.4.1.9.1.2160	DP 1907
ASR-920-24TZ-M	Cisco ASR 920-24TZ-M Router	.1.3.6.1.4.1.9.1.2101	DP 1907
ASR-920-20SZ-M	Cisco ASR 920-20SZ-M Router	.1.3.6.1.4.1.9.1.2705	DP 1907
ASR-920-12SZ-D	Cisco ASR 920-12SZ-D Router	.1.3.6.1.4.1.9.1.2678	DP 1909
ASR-920-12SZ-A	Cisco ASR 920-12SZ-A Router	.1.3.6.1.4.1.9.1.2679	DP 1909

## Cisco ASR 5000 Series Routers — Additional Support

- **Cisco ASR 5000—Supported Software Versions**

Software Version	Added in:
StarOS 21.7	DP 1803
StarOS 21.8	DP 1805
StarOS 21.9	DP 1807
StarOS 21.10	DP 1811
StarOS 21.8	DP 1811
StarOS 21.11	DP 1811
StarOS 21.12	DP 1901
StarOS 21.13	DP 1903
StarOS 21.14.a0*	DP 1905
StarOS 21.15.2	DP 1911
StarOS 21.16	DP 1911
StarOS 21.17	DP 2001
StarOS 21.18.1	DP 2003
StarOS 21.19.0	DP 2005
StarOS 21.20.0	DP 2007
StarOS 21.21.0	DP 2011
StarOS 21.22.0	DP 2101
StarOS 21.23.0	DP 2103
StarOS 21.24.0	DP 2107
StarOS 21.25.0	DP 2111
StarOS 21.26.0	DP 2201

\* StarOS 21.14.a0 is a LA (limited availability) release.

## Cisco ASR 9000 Series Routers — Additional Support

- Cisco ASR 9000— Supported Software Versions



---

Note: The below listed software versions are supported for ASR 9K Classic (32-bit) IOS XR software.

---

Software Version	Added in:
IOS XR 6.4.1	DP 1803
IOS XR 6.3.2	DP 1805
IOS XR 6.4.2	DP 1901
IOS XR 6.5.2	DP 1903
IOS XR 6.5.3	DP 1909
IOS XR 6.6.3	DP 2005
IOS XR 6.7.2	DP 2009
IOS XR 7.1.2*	DP 2009
IOS XR 6.7.3	DP 2101
IOS XR 7.1.3**	DP 2105
IOS-XR 7.3.2***	DP 2111

\* ASR 9K(64-bit) with IOS-XR 7.1.2 will be supported in DP 2009 only if all the below productions SMU's are installed on the device.

- i. [CSCv51226](#)
- ii. [CSCv64858](#)
- iii. [CSCv10524](#)

\*\* ASR 9K(64-bit) with IOS-XR 7.1.3 will be supported in DP 2105 only if the [CSCw10524](#) production SMU is installed on the device.

\*\*\* Breakout feature is not supported due to HWBU dependency bug [CSCw09823](#).

- Cisco ASR 9000 — Supported Network Elements

NE Type	Product Name	SysOID	Added in:
ASR 9901	Cisco ASR 9901	.1.3.6.1.4.1.9.1.2658	DP 2105

- **Cisco ASR 9000 — Supported Modules**

Module Name	Module Description	Added in:
A9K-MOD200-TR	A9K-MOD200-TR	DP 2001
A99-32X100GE-X-TR	A99-32X100GE-X-TR	DP 2009
QSFP-100G-CWDM4-S	QSFP-100G-CWDM4-S	DP 2009
QSFP-100G-AOC10M	QSFP-100G-AOC10M	DP 2009

**Cisco Network Convergence System 540 Series Routers (NCS 540) — Additional Support**

- **Cisco Network Convergence System 540 Series Routers (NCS 540) — Supported software versions**

Software Version	Added in:
IOS XR 6.3.2	DP 1809
IOS XR 6.3.3	DP 1809
*IOS XR 6.6.1	DP 1901
IOS XR 6.6.25	DP 1905
IOS XR 6.5.3 (N540-24Z8Q2C-SYS)	DP 1907
IOS XR 7.0.1	DP 1907
IOS XR 6.6.3	DP 2007
IOS XR 7.1.2	DP 2009
IOS XR 7.2.1	DP 2011
IOS XR 7.2.2	DP 2109
IOS-XR 7.3.2**	DP 2111

\* IOS XR 6.6.1 is an LA (limited availability) release.

\*\* Breakout feature is not supported due to HWBU dependency bug [CSCvy09823](#).

- **Cisco Network Convergence System 540 Series Routers (NCS 540) — Supported Network Elements**

NE Type	Product Name	SysOID	Added in:
Cisco NCS 540 (N540-X-24Z8Q2C-M)	Cisco NCS540	.1.3.6.1.4.1.9.1.2430 <sup>1,2</sup>	DP 1809
Cisco NCS 54016G (N540-ACC-SYS)	ciscoNCS54016G	.1.3.6.1.4.1.9.1.3009	DP 2007
Cisco NCS 540 (N540-X-24Z8Q2C-M)	Cisco NCS540	.1.3.6.1.4.1.9.1.2741 <sup>1,2</sup>	DP 2009

1. Sys OID for **N540-24Z8Q2C-M** will get change from .1.3.6.1.4.1.9.1.2430 to .1.3.6.1.4.1.9.1.2741 on upgrading IOS-XR 7.1.2 due to HW defect [CSCvu03339](#).

2. SFP modelling for NCS 540 with IOS-XR 7.1.2 and IOS-XR 7.2.1 will be supported in DP 2009 and DP 2011 only if [CSCvv51226](#) this production's SMU is installed on the device.

• **Cisco Network Convergence System 540 Series Routers (NCS 540) — Supported Modules**

Module Name	Module Description	Added in
N540-FAN	N540-FAN	DP 1809
QSFP-40G-SR4-S E	QSFP-40G-SR4-S E	DP 1809

• **Cisco Network Convergence System 540 Series Routers (NCS 540) — Supported Technologies**

Support for:	Added in:
<ul style="list-style-type: none"> <li>• AAA Radius</li> <li>• Access List</li> <li>• CDP</li> <li>• LAG</li> <li>• LLDP</li> <li>• IS-IS</li> <li>• Label Switching</li> <li>• Modular OS</li> <li>• MPBGP</li> <li>• MPLS-TE</li> <li>• MPLS-TP</li> <li>• OSPF and OSPFv3</li> <li>• QOS</li> <li>• IPv4 and IPv6</li> <li>• VRF</li> <li>• Local Switching</li> <li>• BFD</li> <li>• Pseudowire</li> <li>• VSI</li> <li>• Bridge</li> <li>• PIM</li> <li>• IGMP</li> </ul>	DP 1809

**Cisco Network Convergence System 560 Series Routers (NCS 560) — Additional Support**

• **Cisco Network Convergence System 560 Series Routers (NCS 560) — Supported software versions**

Software Version	Added in:
IOS XR 7.1.1	DP 2011

- **Cisco Network Convergence System 560 Series Routers (NCS 560) — Supported Network Elements**

NE Type	Product Name	SysOID	Added in:
ciscoN5604RSP4E (N560-4-RSP4-E)	ciscoN5604RSP4E	.1.3.6.1.4.1.9.1.2856*	DP 2011

\*SFP modelling for NCS 560 with IOS-XR 7.1.1 will be supported in DP 2011 only if [CSCvv51226](#) this production SMU is installed on the device.

- **Cisco Network Convergence System 560 Series Routers (NCS 560) — Supported Modules**

Module Name	Module Description	SysOID	Added in
N560-IMA2C	N560-IMA2C	.1.3.6.1.4.1.9.12.3.1.9.2.670	DP 2011
A900-IMA8Z	A900-IMA8Z	.1.3.6.1.4.1.9.12.3.1.9.2.526	DP 2011
N560-4-RSP4E	N560-4-RSP4E	.1.3.6.1.4.1.9.12.3.1.9.2.671	DP 2011
N560-4-FAN-H	N560-4-FAN-H	.1.3.6.1.4.1.9.12.3.1.7.370	DP 2011
N560-4-PWR-FAN	N560-4-PWR-FAN	.1.3.6.1.4.1.9.12.3.1.7.372	DP 2011
A900-PWR1200-A	A900-PWR1200-A	.1.3.6.1.4.1.9.12.3.1.6.478	DP 2011

- **Cisco Network Convergence System 560 Series Routers (NCS 560) — Supported Technologies**

Support for:	Added in:
<ul style="list-style-type: none"> <li>• Access List</li> <li>• CDP</li> <li>• BFD</li> <li>• LLDP</li> <li>• LSE</li> <li>• Modular OS</li> <li>• MPBGP</li> <li>• QOS</li> <li>• IPv4 and IPv6</li> <li>• Routing Entities</li> <li>• Local Switching</li> <li>• BFD</li> </ul>	DP 2011

**Cisco Network Convergence System 5500 Series Routers (NCS 5500) — Additional Support**

- **Cisco Network Convergence System 5500 Series Routers (NCS 5500) — Supported software versions**

Software Version	Added in:
IOS XR 6.3.3	DP 1905

Software Version	Added in:
IOS XR 6.6.25	DP 1907
IOS XR 7.0.1	DP 1911
IOS XR 7.1.2*	DP 2009
IOS XR 7.2.1*	DP 2011
IOS XR 6.6.3 SP2	DP 2101
IOS XR 7.3.1	DP 2103
IOS XR 7.2.2	DP 2109
IOS-XR 7.3.2**	DP 2111

\*SFP modelling for NCS 55xx with IOS-XR 7.1.2 and IOS-XR 7.2.1 will be supported in DP 2009 and DP 2011 only if [CSCvw51226](#) this production SMU is installed on the device.

\*\* Breakout feature is not supported due to HWBU dependency bug [CSCvy09823](#).

- **Cisco Network Convergence System 5500 Series Routers (NCS 5500) — Supported Network Elements**

NE Type	Product Name	SysOID	Added in:
Cisco NCS 5501	Cisco NCS 5500	.1.3.6.1.4.1.9.1.2400	DP 1905
NCS-5501-SE	Cisco NCS5501-SE Router	.1.3.6.1.4.1.9.1.2350	DP 1907
NCS-55A1-36H-S	Cisco NCS55A136 - HS Router	.1.3.6.1.4.1.9.1.2429	DP 1907
NCS-55A1-36H-SE	Cisco NCS55A1-36H-SE Router	.1.3.6.1.4.1.9.1.2428	DP 1907
NCS 5504	Cisco NCS 5504 Router	.1.3.6.1.4.1.9.1.2413	DP 2001
NCS 5508	Cisco NCS 5508	.1.3.6.1.4.1.9.1.2349	DP 2011
NCS 55A1-24H	ciscoNCS55A124H	.1.3.6.1.4.1.9.1.2432	DP 2109
*NCS55A1-24Q6H-S	ciscoNCS55A124Q6HS	.1.3.6.1.4.1.9.1.3158	DP 2109
NCS-55A1-48Q6H	ciscoNCS55A148Q6H	.1.3.6.1.4.1.9.1.2866	DP 2111

\* NCS-55A1-24Q6H-S (1.3.6.1.4.1.9.1.3158) will be supported in DP 2109 only if the [CSCvz72160](#) production SMU is installed on the device.

- **Cisco Network Convergence System 5500 Series Routers (NCS 5500) — Supported Technologies**

<b>Support for:</b>	<b>Added in:</b>
<ul style="list-style-type: none"> <li>• AAA Radius</li> <li>• Access List</li> <li>• CDP</li> <li>• LAG</li> <li>• LLDP</li> <li>• IS-IS</li> <li>• Label Switching</li> <li>• Modular OS</li> <li>• MPBGP</li> <li>• MPLS-TE</li> <li>• MPLS-TP</li> <li>• OSPF and OSPFv3</li> <li>• QOS</li> <li>• IPv4 and IPv6</li> <li>• VRF</li> <li>• Local Switching</li> <li>• BFD</li> <li>• Pseudowire</li> <li>• VSI</li> <li>• Bridge</li> <li>• PIM</li> <li>• IGMP</li> </ul>	DP 1905
<ul style="list-style-type: none"> <li>• BGP EVPN Address family in Inventory</li> </ul>	DP 2003
<ul style="list-style-type: none"> <li>• IPv4 BGP Routes</li> </ul>	DP 2105

- **Cisco Network Convergence System 5500 Series Routers (NCS 5500) — Supported Modules**

<b>Module Name</b>	<b>Module Description</b>	<b>SysOID</b>	<b>Added in:</b>
NCS-5501-SE	QSFP-100G-AOC3M	.1.3.6.1.4.1.9.12.3.1.9.118.7	DP 1907
NCS-55A1-36HS	QSFP-100G-AOC7M	.1.3.6.1.4.1.9.12.3.1.9.118.9	DP 1907
NCS-55A1-36H-SE	QSFP-100G-SR4-S	.1.3.6.1.4.1.9.12.3.1.9.118.1	DP 1907
NC55-PWR-3KW-AC	NCS 5500 3KW AC Power Supply	.1.3.6.1.4.1.9.12.3.1.6.511	DP 2001
NC55-SC	NCS 5500 System Controller	.1.3.6.1.4.1.9.12.3.1.9.2.534	DP 2001
NC55-RP-E	NCS 5500 Route Processor	.1.3.6.1.4.1.9.12.3.1.9.2.617	DP 2001
NC55-5504-FC	NCS 5504 Fabric Card	.1.3.6.1.4.1.9.12.3.1.9.2.623	DP 2001
NC55-5504-FAN	Fan Tray module	.1.3.6.1.4.1.9.12.3.1.7.303	DP 2001
QSFP-100G-SM-SR	QSFP-100G-SM-SR	.1.3.6.1.4.1.9.12.3.1.9.118.31	DP 2001



Module Name	Module Description	SysOID	Added in:
NCS-950W-DCFW	NCS-950W-DCFW	.1.3.6.1.4.1.9.12.3.1.6.553	DP 2001
NC55-36X100G	NC55-36X100G	.1.3.6.1.4.1.9.12.3.1.9.2.535	DP 2011
NC55-MOD-A-SE-S	NC55-MOD-A-SE-S	.1.3.6.1.4.1.9.12.3.1.9.2.652	DP 2011
NC55-5508-FAN	NC55-5508-FAN	.1.3.6.1.4.1.9.12.3.1.7.277	DP 2011
NC55-5508-FC	NC55-5508-FC	.1.3.6.1.4.1.9.12.3.1.9.2.536	DP 2011
QSFP-H40G-CU3M	QSFP-H40G-CU3M	.1.3.6.1.4.1.9.12.3.1.9.102.5	DP 2011
QSFP-100G-PSM4-S	QSFP-100G-PSM4-S	.1.3.6.1.4.1.9.12.3.1.9.118.3	DP 2011
*NC55-PWR-3KW-DC	NC55-PWR-3KW-DC	.1.3.6.1.4.1.9.12.3.1.6.510	DP 2103
NC55-5504-FAN2	NC55-5504-FAN2	.1.3.6.1.4.1.9.12.3.1.7.408	DP 2103
NC55-5504-FC2	NC55-5504-FC2	.1.3.6.1.4.1.9.12.3.1.9.2.712	DP 2103
NC55-36X100G-A-SE	NC55-36X100G-A-SE	.1.3.6.1.4.1.9.12.3.1.9.2.618	DP 2103
NC55-5508-FAN2	NC55-5508-FAN2	.1.3.6.1.4.1.9.12.3.1.7.352	DP 2103
NC55-5508-FC2	NC55-5508-FC2	.1.3.6.1.4.1.9.12.3.1.9.2.669	DP 2103
QSFP-4x10g-LR-S	cevQSFP4X10GLRLS	.1.3.6.1.4.1.9.12.3.1.9.93.13	DP 2109
SFP-H25G-CU2M	SFP-H25G-CU2M	.1.3.6.1.4.1.9.12.3.1.9.122.2	DP 2111
QSFP-100G-CU3M	QSFP-100G-CU3M	.1.3.6.1.4.1.9.12.3.1.9.118.17	DP 2111

\* Power status shows incorrect for NC55-PWR-3KW-DC due to HWBU dependency bug [CSCvx85393](#)

## Cisco Network Convergence System 6000 Series Routers – Additional Support

- Cisco NCS6000 — Supported Software Versions

Software Version	Added in:
XR 6.4.1	DP 1803

- Cisco NCS 6000— Supported Technologies

Technology	Added in:
Single Chassis Multi-SDR	DP 1805
LLDP	DP 1807

- Cisco NCS 6000 — Supported Modules

Module Name	Module Description	Added in:
NC6-FANTRAY-2	NC6-FANTRAY-2	DP 1803
NC6-FC2-U	NC6-FC2-U	DP 1803

Module Name	Module Description	Added in:
NC6-20X100GE-M-C	NC6-20X100GE-M-C	DP 1803
QSFP-100G-LR4-S	QSFP-100G-LR4-S	DP 1803

### Cisco ME 3600X Ethernet Access Switch

- **Cisco ME 3600—Supported Technologies**

Technology	Added in:
*CEM	DP 2103

\* CEM ports are supported for the module (ME-3600X-24CX-M).

### Cisco ISR 892 Routers —Additional Support

- **Cisco ISR 892—Supported Software Versions**

Software Version	Added in:
IOS 15.4.3M10(MD)	DP 1811

- **Cisco ISR 892— Supported Network Elements**

NE Type	Product Name	SysOID	Added in:
CISCO892F-K9	CISCO892F-K9	.1.3.6.1.4.1.9.1.1249	DP 1811
C892FSP-K9	C892FSP-K9	.1.3.6.1.4.1.9.1.1620	DP 1811

- **Cisco ISR 892—Supported Modules**

Module Name	Module Description	Added in
C892FSP Mother board	C892FSP Mother board	DP 1811

### Cisco ISR 2000 Routers —Additional Support

- **Cisco ISR 2921—Supported Software Versions**

Software Version	Added in:
IOS-XE 15.5(3)MS	DP 1803

- **Cisco ISR 2921—Supported Modules**

Module Name	Module Description	Added in
HWIC-16A	HWIC-16A	DP 1803
SM-ES2-24	SM-ES2-24	DP 1807

- **Cisco ISR 2911—Supported Software Versions**

Software Version	Added in:
IOS 15.4.3.M4	DP 1805

### Cisco ISR 4000 Routers —Additional Support

- **Cisco ISR 4221—Supported Software Versions**

Software Version	Added in:
IOS-XE 16.4.3	DP 1805

- **Cisco ISR 4221—Supported Modules**

Module Name	Module Description	Added in
ISR4221/K9	ISR4221/K9	DP 1805
ACS-4220-FANASSY	Fan Assembly	DP 1805
PWR-4220-AC	90W AC Power Supply	DP 1805

- **Cisco ISR 4331—Supported Software Versions**

Software Version	Added in:
IOS 16.03.06	DP 1807

- **Cisco ISR 4451-X —Supported Software Versions**

Software Version	Added in:
IOS 16.03.06	DP 1807

## Cisco 7606 Series Routers

- **Cisco 7606—Supported Software Versions**

Software Version	Added in:
IOS 15.5(3)S7	DP 1905

- **Cisco 7606-S—Supported Software Versions**

Software Version	Added in:
IOS 15.5(3)S7	DP 1905

## Cisco CRS Carrier Routing System—Additional Support

- **Cisco CRS —Supported Software Versions**

Software Version	Added in:
XR 6.4.1	DP 1803
IOS-XR 6.4.2	DP 1905

## Cisco IOS-XRv9k—Additional Support

- **Cisco IOS-XRv9k—Supported Software Versions**

Software Version	Added in:
IOS XR 6.5.2	DP 1903

## New Support for Firewall Device

### Cisco ASA —Additional Support

### Cisco ASA5585-XSeries Switches — Additional Support

- **Cisco —Supported Software Versions**

Software Version	Added in:
9.4.4(14)	DP1803

## Cisco ASA5516-X Series Switches — Additional Support

- Cisco — Supported Software Versions

Software Version	Added in:
9.4.4(14)	DP1803

## Cisco ASA5512-X Series Switches — Additional Support

- Cisco — Supported Software Versions

Software Version	Added in:
9.4.4(14)	DP1803

## Cisco ASA5515-X Series Switches — Additional Support

- Cisco — Supported Software Versions

Software Version	Added in:
9.4.4(14)	DP1803

## Cisco ASA5525 Series Switches — Additional Support

- Cisco — Supported Software Versions

Software Version	Added in:
9.4.4(14)	DP1803

## Cisco ASA5545 Series Switches — Additional Support

- Cisco — Supported Software Versions

Software Version	Added in:
9.4.4(14)	DP1803

## Cisco ASA5555 Series Switches — Additional Support

- Cisco — Supported Software Versions

Software Version	Added in:
9.4.4(14)	DP1803

## Cisco ASA5585-X Series Switches — Additional Support

- Cisco — Supported Software Versions

Software Version	Added in:
9.4.4(14)	DP1803

- Cisco ASA—Supported Network Elements

NE Type	Product Name	SysOID	Added in:
ASA 5525	ASA 5525		DP 1803
ASA5585-SSP-20	ASA5585-SSP-20	.1.3.6.1.4.1.9.1.1195	DP 2111

- Cisco ASA — Supported Modules

Module Name	Module Description	SysOID	Added in
ASA5585-SSP-IPS20	ASA5585-SSP-IPS20	.1.3.6.1.4.1.9.12.3.1.9.83.6	DP 2111

## New Support for Cisco Switches

### Cisco Industrial Ethernet 2K — Additional Support

- Cisco Industrial Ethernet 2K — Supported software versions

Software Version	Added in:
15.2(4)EA5	DP 1805
15.2(4)EA8	DP 1905

- Cisco Industrial Ethernet 2K — Supported Network Elements

NE Type	Product Name	SysOID	Added in:
Cisco IE 20xx	Cisco IE 20xx	.1.3.6.1.4.1.9.1.1473	DP 1805
Cisco IE 20xx	Cisco IE 20xx	.1.3.6.1.4.1.9.1.1475	DP 1805
Cisco IE 20xx	Cisco IE 20xx	.1.3.6.1.4.1.9.1.1730	DP 1805
IE-2000-16PTC-G-NX	Cisco IE 20xx	.1.3.6.1.4.1.9.1.1731	DP 1905
IE-2000-16TC-G-X	Cisco IE 20xx	.1.3.6.1.4.1.9.1.1520	DP 1905

- **Cisco Industrial Ethernet 2K — Supported Modules**

Module Name	Module Description	Added in
IE-2000-8TC-G-E	IE-2000-8TC-G-E	DP 1805
IE-2000-16TC-G-E	IE-2000-16TC-G-E	DP 1805
IE-2000-16PTC-G-E	IE-2000-16PTC-G-E	DP 1805
IE-2000-8TC-G-L	IE-2000-8TC-G-L	DP 1811
IE-2000-16PTC-G-L	IE-2000-16PTC-G-L	DP 1811
IE-2000-16TC-G-L	IE-2000-16TC-G-L	DP 1901

- **Cisco Industrial Ethernet 2K — Supported Technologies**

Support for:	Added in:
Access Lists Bridges CDP LLDP OS IP, IPV4, IPV6 STP VTP OSPF QOS VRF PIM IGMP	DP 1805

### Cisco Industrial Ethernet 3K — Additional Support

- **Cisco Industrial Ethernet 3K — Supported software versions**

Software Version	Added in:
15.2(4)EA5	DP 1807

- **Cisco Industrial Ethernet 3K — Supported Network Elements**

NE Type	Product Name	SysOID	Added in:
Cisco IE 30xx	Cisco IE 30xx	.1.3.6.1.4.1.9.1.1319	DP 1807
Cisco IE 30xx	Cisco IE 30xx	.1.3.6.1.4.1.9.1.1320	DP 1807

- **Cisco Industrial Ethernet 3K — Supported Modules**

Module Name	Module Description	Added in
IE-3010-16S-8PC	IE-3010-16S-8PC	DP 1807
IE-3010-24TC	IE-3010-24TC	DP 1807

- **Cisco Industrial Ethernet 3K — Supported Technologies**

Support for:	Added in:
Access Lists Bridges CDP LLDP OS IP,IPV4,IPV6 STP VTP OSPF QOS VRF PIM IGMP	DP 1807

**Cisco Industrial Ethernet 4K — Additional Support**

- **Cisco Industrial Ethernet 4K — Supported software versions**

Software Version	Added in:
15.2(4)EA5	DP 1805
15.2.6E1	DP 1805
15.2(4)EA8	DP 1905
15.2(7)E2	DP 2109



- **Cisco Industrial Ethernet 4K — Supported Network Elements**

NE Type	Product Name	SysOID	Added in:
Cisco IE 40xx	Cisco IE 40xx	.1.3.6.1.4.1.9.1.2072	DP 1805
Cisco IE 40xx	Cisco IE 40xx	.1.3.6.1.4.1.9.1.2077	DP 1805
IE-4000-4GS8GP4G-E	Cisco IE 40xx	.1.3.6.1.4.1.9.1.2079	DP 1905
IE-4000-8GT8GP4G-E	Cisco IE 40xx	.1.3.6.1.4.1.9.1.2080	DP 1905
IE-4000-16GT4G-E	Cisco IE-4000-16GT4G-E Industrial Ethernet Switch	.1.3.6.1.4.1.9.1.2078	DP 1907
IE-4000-16T4G-E	Cisco IE-4000-16T4G-E Industrial Ethernet Switch	.1.3.6.1.4.1.9.1.2073	DP 1907
IE-4000-4S8P4G-E	Cisco IE-4000-4S8P4G-E Industrial Ethernet Switch	.1.3.6.1.4.1.9.1.2074	DP 1907
IE-4000-4TC4G-E	Cisco IE-4000-4TC4G-E Industrial Ethernet Switch	.1.3.6.1.4.1.9.1.2069	DP 1907
IE-4000-8GT4G-E	Cisco IE 4000 8GT4GE Industrial Ethernet Switch	.1.3.6.1.4.1.9.1.2075	DP 1907
IE-4000-8S4G-E	Cisco IE 4000 8S4GE Industrial Ethernet Switch	.1.3.6.1.4.1.9.1.2071	DP 1907
IE-4000-8T4G-E	Cisco IE 4000 8T4GE Industrial Ethernet Switch	.1.3.6.1.4.1.9.1.2070	DP 1907
IE-4010-4S24P	Cisco IE 4010 4S24P Industrial Ethernet Switch	.1.3.6.1.4.1.9.1.2368	DP 2111
IE-4010-16S12P	Cisco IE 4010 16S12P Industrial Ethernet Switch	.1.3.6.1.4.1.9.1.2369	DP 2111

- **Cisco Industrial Ethernet 4K — Supported Modules**

Module Name	Module Description	SysOID	Added in
IE-4000-4GC4GP4G-E	IE-4000-4GC4GP4G-E		DP 1805
IE-4000-4T4P4G-E	IE-4000-4T4P4G-E		DP 1805
*IE-4010-4S24P	IE-4010-4S24P	.1.3.6.1.4.1.9.12.3.1.9.71.142	DP 2111
*IE-4010-16S12P	IE-4010-16S12P	.1.3.6.1.4.1.9.12.3.1.9.71.143	DP 2111
PWR-RGD-AC-DC-250	PWR-RGD-AC-DC-250	.1.3.6.1.4.1.9.12.3.1.6.633	DP 2111
PWR-RGD-AC-DC-H	PWR-RGD-AC-DC-H	.1.3.6.1.4.1.9.12.3.1.6.284	DP 2111

\* Few ports are not modelled on IE4K due to HWBU dependency bug [CSCwa36449](#).

- **Cisco Industrial Ethernet 4K — Supported Technologies**

<b>Support for:</b>	<b>Added in:</b>
Access Lists Bridges CDP LLDP OS IP,IPV4,IPV6 STP VTP OSPF QOS VRF PIM IGMP	DP 1805

**Cisco 2500 Series Connected Grid Switches—Additional Support**

- **Cisco CGS 2520 — Supported Software Versions**

<b>Software Version</b>	<b>Added in:</b>
IOS 15.2(4)EA5	DP 1807

- **Cisco CGS 2520 — Supported Modules**

<b>Module Name</b>	<b>Module Description</b>	<b>Added in:</b>
CGS-2520-16S-8PC	CGS-2520-16S-8PC	DP 1807
CGS-2520-24TC	CGS-2520-24TC	DP 1807

- **Cisco CGS 2520—Supported Technologies**

<b>Technology</b>	<b>Added in:</b>
IPv6	DP 1807

**Cisco Catalyst 4500-X Series Switches — Additional Support**

- **Cisco Catalyst 4500-X — Supported Software Versions**

<b>Software Version</b>	<b>Added in:</b>
15(1)2.SG5	DP 1805

- **Cisco Catalyst 4500-X — Supported Modules**

Module Name	Module Description	Added in:
C4KX-NM-8SFP+	C4KX-NM-8SFP+	DP 1805
WS-C4500X-32SFP+	WS-C4500X-32SFP+	DP 1805
WS- C4500X-16SFP+	WS- C4500X-16SFP+	DP 1805

**Cisco Catalyst 3850 Series Switches — Additional Support**

- **Cisco Catalyst 3850— Supported Software Versions**

Software Version	Added in:
3.6.3E	DP 1803
IOS XE 3.6.3E / 15.2(2)E3	DP 1807
IOS-XE 16.03.06	DP 1807
IOS-XE 16.3.8	DP 1909
IOS-XE 16.12.5b	DP 2105

- **Cisco catalyst 3850 — Supported Modules**

Module Name	Module Description	Added in:
WS-3850-48T-E	WS-3850-48T-E	DP 1803
C3850-NM-2-10G	C3850-NM-2-10G	DP 1803
C3850-NM-4-10G	C3850-NM-4-10G	DP 1803
C3850-NM-4-1G	C3850-NM-4-1G	DP 1803
WS-C3850-12S-S	WS-C3850-12S-S	DP 1807

- **Cisco catalyst 3850 — Supported Technologies**

Support for	Added in:
ISIS	DP 2001

**Cisco Catalyst 3650 Series Switches — Additional Support**

- **Cisco catalyst 3650—Supported Software Versions**

Software Version	Added in:
3.6.3E	DP 1803

Software Version	Added in:
IOS-XE 16.12.4	DP 2011
IOS-XE 16.12.5b	DP 2107

### Cisco Catalyst 2960 Series Switches—Additional Support

- **Cisco Cat 2960—Supported Software Versions**

Software Version	Added in:
15.2(4)E2	DP 1809
15.2(6) E	DP 1909

- **Cisco Cat 2960—Supported Modules**

Module Name	Module Description	Added in:
WS-C2960C-8TC-L	WS-C2960C-8TC-L	DP 1809
WS-C2960X-24TS-L	WS-C2960X-24TS-L	DP 1809
WS-C2960X-24TD-L	WS-C2960X-24TD-L	DP 1809
WS-C2960C-12PC-L	WS-C2960C-12PC-L	DP 1809
WS-C2960CX-8TC-L	WS-C2960CX-8TC-L	DP 1901
WS-C2960L-8TS-LL	WS-C2960L-8TS-LL	DP 1909

### Cisco Nexus 5000 Series Switches—Additional Support

- **Cisco Nexus 5000 — Supported Software Versions**

Software Version	Added in:
NX-OS 7.3.(7)N1(1)	DP 2003

- **Cisco Nexus 5000 — Supported Modules**

Module Name	Module Description	SysOID	Added in
N55-M160L3-V2	N55-M160L3-V2	.1.3.6.1.4.1.9.12.3.1.9.72.20	DP 2003

## Cisco Nexus 7000 Series Switches—Additional Support

- **Cisco Nexus 7000 — Supported Software Versions**

Software Version	Added in:
NXOS 8.3.1	DP 1807
NXOS 8.2.3	DP 1903
NXOS 8.2.4	DP 1907
NXOS 8.4.1	DP 1907

- **Cisco Nexus 7000 — Supported Network Elements**

NE Type	Product Name	SysOID	Added in:
Nexus 7004	Nexus 7004	.1.3.6.1.4.1.9.12.3.1.3.1147	DP 1809

## Cisco Nexus 9000 Series Switches—Additional Support

- **Cisco Nexus 9000 — Supported Software Versions**

Software Version	Added in:
7.0(3)I7(3)	DP 1809
7.0(3)I4(8a)	DP 1809
NXOS 9.2.2	DP 1903
NXOS 9.3.1	DP 1907
NXOS 7.0(3)I7(4)	DP 1911
NXOS 9.3.6	DP 2101

- **Cisco Nexus 9000—Supported Network Elements**

NE Type	Product Name	SysOID	Added in:
C92160YC - X	C92160YC - X		DP 1803
N9272	N9272	.1.3.6.1.4.1.9.12.3.1.3.1745	DP 1805
N9K-C93240YC-FX2	N9K-C93240YC-FX2	.1.3.6.1.4.1.9.12.3.1.3.2010	DP 2003
N9K-C9336C-FX2	N9K-C9336C-FX2	.1.3.6.1.4.1.9.12.3.1.3.1955	DP 2003
N9K-C92348GC-X	N9K-C92348GC-X	.1.3.6.1.4.1.9.12.3.1.3.2239	DP 2009

- Cisco Nexus 9000 — Supported Technologies

Support for	Added in:
*BFD neighbors with VRF Name	DP 2107



---

\*Note: BFD neighbor loss/BFD neighbor found service alarms will not show the VRF Name in the location.

---

- **Cisco Nexus 9000 — Supported Modules**

Module Name	Module Description	SysOID	Added in
SFP-10G-SR	SFP-10G-SR	.1.3.6.1.4.1.9.12.3.1.9.76.3	DP 1905
QSFP-40G-SR4	QSFP-40G-SR4	.1.3.6.1.4.1.9.12.3.1.9.93.2	DP 1905
QSFP-40G-SR4-S	QSFP-40G-SR4-S	.1.3.6.1.4.1.9.12.3.1.9.93.10	DP 1905
QSFP-40G-SR-BD	QSFP-40G-SR-BD	.1.3.6.1.4.1.9.12.3.1.9.93.8	DP 1905
QSFP-100G-SR4-S	QSFP-100G-SR4-S	.1.3.6.1.4.1.9.12.3.1.9.118.1	DP 1907
QSFP-100G-LR4-S	QSFP-100G-LR4-S	.1.3.6.1.4.1.9.12.3.1.9.118.4	DP 1907
QSFP-100G-AOC7M	QSFP-100G-AOC7M	.1.3.6.1.4.1.9.12.3.1.9.118.9	DP 1907
QSFP-100G-AOC10M	QSFP-100G-AOC10M	.1.3.6.1.4.1.9.12.3.1.9.118.10	DP 1907
WSP-Q40GLR4L	WSP-Q40GLR4L	.1.3.6.1.4.1.9.12.3.1.9.93.25	DP 1907
QSFP-40G-CSR4	QSFP-40G-CSR4	.1.3.6.1.4.1.9.12.3.1.9.93.6	DP 1907
1000base-T	1000base-T	.1.3.6.1.4.1.9.12.3.1.9.51.8	DP 1907
QSFP-100G-LR4	QSFP-100G-LR4	.1.3.6.1.4.1.9.12.3.1.9.117.1	DP 1907
QSFP-100G-SR4	QSFP-100G-SR4	.1.3.6.1.4.1.9.12.3.1.9.117.2	DP 1907
QSFP-4X10G-LR	QSFP-4X10G-LR	.1.3.6.1.4.1.9.12.3.1.9.93.13	DP 1907
N9K-C9504-FM-E	N9K-C9504-FM-E	.1.3.6.1.4.1.9.12.3.1.9.100.28	DP 2003
N9K-X97160YC-EX	N9K-X97160YC-EX	.1.3.6.1.4.1.9.12.3.1.9.100.36	DP 2003
NXA-PAC-1100W-PE2	NXA-PAC-1100W-PE2	.1.3.6.1.4.1.9.12.3.1.6.610	DP 2003
NXA-FAN-35CFM-PE	NXA-FAN-35CFM-PE	.1.3.6.1.4.1.9.12.3.1.7.357	DP 2003
NXA-FAN-65CFM-PE	NXA-FAN-65CFM-PE	.1.3.6.1.4.1.9.12.3.1.7.359	DP 2003
SFP-H10GB-CU2M	SFP-H10GB-CU2M	.1.3.6.1.4.1.9.12.3.1.9.77.23	DP 2003
SFP-10G-LR	SFP-10G-LR	.1.3.6.1.4.1.9.12.3.1.9.76.1	DP 2009
N9K-C92348GC-X (Fixed Module)	N9K-C92348GC-X (Fixed Module)	.1.3.6.1.4.1.9.12.3.1.9.114.8	DP 2009

### Cisco Nexus 3000 Series Switches—Additional Support

- **Cisco Nexus 3000 — Supported Software Versions**

Software Version	Added in:
NX-OS 9.3.1	DP 2009
NX-OS 9.3.7	DP 2107

- **Cisco Nexus 3000 — Supported Technologies**

Support for	Added in:
ISIS	DP 2001

**Cisco Catalyst 9300 Series Switches — Additional Support**

- **Cisco Catalyst 9300 — Supported Software Versions**

Software Version	Added in:
IOS-XE 16.9.4	DP 2005
IOS-XE 16.9.5	DP 2007
IOS-XE 16.12.2	DP 2007

- **Cisco Catalyst 9300 — Supported Network Elements**

NE Type	Product Name	SysOID	Added in:
C9300L-24T-4X-E	C9300L-24T-4X-E	.1.3.6.1.4.1.9.1.2494	DP 2005
C9300L-48T-E	C9300L-48T-E	.1.3.6.1.4.1.9.1.2494	DP 2007
C9300-48T-4X	C9300-48T-4X	.1.3.6.1.4.1.9.1.2804	DP 2007

- **Cisco Catalyst 9300 — Supported Modules**

Module Name	Module Description	SysOID	Added in:
C9300-NM-8X	C9300-NM-8X	.1.3.6.1.4.1.9.12.3.1.9.2.646	DP 2007
PWR-C1-350WAC-P	PWR-C1-350WAC-P	.1.3.6.1.4.1.9.12.3.1.6.641	DP 2007



- **Cisco Catalyst 9300 — Supported Technologies**

<b>Support for:</b>	<b>Added in:</b>
<ul style="list-style-type: none"> <li>• Bridges</li> <li>• Cisco Discovery Protocol</li> <li>• Ethernet Link Aggregation</li> <li>• Link Layer Discovery Protocol</li> <li>• Operating System</li> <li>• IPv4 and IPv6</li> <li>• Spanning Tree Protocol</li> <li>• VTP</li> </ul>	DP 2005
<ul style="list-style-type: none"> <li>• VRF</li> </ul>	DP 2011

**New Support for VMware Devices**

**VMware VirtualCenter Server — Additional Support**

- **VMware VirtualCenter Server — Supported Software Versions**

<b>Software Version</b>	<b>Added in:</b>
6.0	DP 1811
6.5	DP 1811

**New Support for Data Center**

**Cisco UCS — Additional Support**

- **Cisco UCS — Supported Software Versions**

<b>Software Version</b>	<b>Added in:</b>
Firmware version: 2.2(8l) NX-OS version: 5.2(3)N2(2.28l)	DP 1811
Firmware version: 3.1(3K) NX-OS version: 5.0(3)N2(3.13h)	DP 1811
Firmware version: 3.2(3h) NX-OS version: 5.0(3)N2(3.23e)	DP 1811
Firmware version: 4.0(1b) NX-OS version: 5.0(3)N2(4.01b)	DP 1811
Firmware Version: 3.2(3j) NX-OS version: 5.0(3)N2(3.23h)	DP 1909

Software Version	Added in:
Firmware Version: 4.0(2d) NX-OS version: 5.0(3)N2(4.02c)	DP 1909
Firmware Version: 4.0(4a) NX-OS version: 5.0(3)N2(4.0.4a)	DP 2001

- **Cisco UCS — Supported Network Elements**

NE Type	Product Name	SysOID	Added in:
UCS-FI-6332-16UP	UCS-FI-6332-16UP	.1.3.6.1.4.1.9.12.3.1.3.1662	DP 1909

### Cisco UCS C Series Rack Mount Server — Additional Support

- **Cisco UCS Rack Servers — Supported Software Versions**

Software Version	Added in:
*Firmware Version: 4.0(2l)	DP 2005




---

\*Note: VNE discovery using SSH is not supported due to stronger encryptions enforced in the 4.0(2l) version on the UCS Rack Servers

---

### New Support for Events and Miscellaneous Support

#### Supported Traps

#### Cisco ASR 5000—Supported Traps

Support for	OID	Added in
starSxPathFailure	.1.3.6.1.4.1.8164.2.1382	DP 1805
starSxPathFailureClear	.1.3.6.1.4.1.8164.2.1383	DP 1805
starThreshDataPlaneMonitor5MinsLoss	.1.3.6.1.4.1.8164.2.1384	DP 1805
starThreshClearDataPlaneMonitor5MinsLoss	.1.3.6.1.4.1.8164.2.1385	DP 1805
starThreshDataPlaneMonitor60MinsLoss	.1.3.6.1.4.1.8164.2.1386	DP 1805
starThreshClearDataPlaneMonitor60MinsLoss	.1.3.6.1.4.1.8164.2.1387	DP 1805
starThreshControlPlaneMonitor5MinsLoss	.1.3.6.1.4.1.8164.2.1388	DP 1805

starThreshClearControlPlaneMonitor5MinsLoss	.1.3.6.1.4.1.8164.2.1389	DP 1805
starThreshControlPlaneMonitor60MinsLoss	.1.3.6.1.4.1.8164.2.1390	DP 1805
starThreshClearControlPlaneMonitor60MinsLoss	.1.3.6.1.4.1.8164.2.1391	DP 1805
starChassisThroughputOver	.1.3.6.1.4.1.8164.2.1394	DP 1807
starChassisThroughputOverClear	.1.3.6.1.4.1.8164.2.1395	DP 1807
starChassisThroughputWarn	.1.3.6.1.4.1.8164.2.1396	DP 1807
starChassisThroughputWarnClear	.1.3.6.1.4.1.8164.2.1397	DP 1807
starUidhURLHostDatabaseUpgradeFailureStatus	.1.3.6.1.4.1.8164.2.1399	DP 1811
starUidhURLHostDatabaseUpgradeSuccessStatus	.1.3.6.1.4.1.8164.2.1400	DP 1811
starSmartLicenseFeatureOOC	.1.3.6.1.4.1.8164.2.1401	DP 1811
starSmartLicenseFeatureOOCClear	.1.3.6.1.4.1.8164.2.1402	DP 1811
starIFTaskBootConfigApplied	.1.3.6.1.4.1.8164.2.1398	DP 1811

<b>Support for CISCO-SYSTEM-EXT-MIB</b>	<b>OID</b>	<b>Added in</b>
cseHaRestartNotify	.1.3.6.1.4.1.9.9.305.1.3.5.0.1	DP 1811
cseShutDownNotify	.1.3.6.1.4.1.9.9.305.1.3.5.0.2	DP 1811
cseFailSwCoreNotify	.1.3.6.1.4.1.9.9.305.1.4.3.0.1	DP 1811
cseFailSwCoreNotifyExtended	.1.3.6.1.4.1.9.9.305.1.4.3.0.2	DP 1811
cseNormalModeChangeNotify	.1.3.6.1.4.1.9.9.305.1.7.2.0.1	DP 1811
cseMaintModeChangeNotify	.1.3.6.1.4.1.9.9.305.1.7.2.0.2	DP 1811

<b>Support for CISCO-ENHANCED-IPSEC-FLOW-MIB</b>	<b>OID</b>	<b>Added in</b>
ciscoEnhIpsecFlowTunnelStart	.1.3.6.1.4.1.9.9.432.0.1	DP 1811
ciscoEnhIpsecFlowTunnelStop	.1.3.6.1.4.1.9.9.432.0.2	DP 1811
ciscoEnhIpsecFlowSysFailure	.1.3.6.1.4.1.9.9.432.0.3	DP 1811
ciscoEnhIpsecFlowSetupFail	.1.3.6.1.4.1.9.9.432.0.4	DP 1811
ciscoEnhIpsecFlowBadSa	.1.3.6.1.4.1.9.9.432.0.5	DP 1811
ciscoEnhIpsecFlowCertExpiry	.1.3.6.1.4.1.9.9.432.0.6	DP 1811
ciscoEnhIpsecFlowCertRenewal	.1.3.6.1.4.1.9.9.432.0.7	DP 1811

<b>Support for CISCO-IF-EXTENSION-MIB</b>	<b>OID</b>	<b>Added in</b>
---	------------	-----------------

CiePortLinkDown	.1.3.6.1.4.1.9.9.276.0.1	DP 1811
CiePortLinkUp	.1.3.6.1.4.1.9.9.276.0.2	DP 1811
cieDelayedLinkUpDownNotify	.1.3.6.1.4.1.9.9.276.0.3	DP 1811

<b>Support for CISCO-FLASH-MIB</b>	<b>OID</b>	<b>Added in</b>
ciscoFlashCopyCompletionTrap	.1.3.6.1.4.1.9.9.10.1.3.0.1	DP 1901
ciscoFlashPartitioningCompletionTrap	.1.3.6.1.4.1.9.9.10.1.3.0.2	DP 1901
ciscoFlashMiscOpCompletionTrap	.1.3.6.1.4.1.9.9.10.1.3.0.3	DP 1901
ciscoFlashDeviceChangeTrap	.1.3.6.1.4.1.9.9.10.1.3.0.4	DP 1901
ciscoFlashDeviceInsertedNotif	.1.3.6.1.4.1.9.9.10.1.3.0.5	DP 1901
ciscoFlashDeviceRemovedNotif	.1.3.6.1.4.1.9.9.10.1.3.0.6	DP 1901
ciscoFlashDeviceInsertedNotifRev1	.1.3.6.1.4.1.9.9.10.1.3.0.7	DP 1901
ciscoFlashDeviceRemovedNotifRev1	.1.3.6.1.4.1.9.9.10.1.3.0.8	DP 1901
ciscoFlashPartitionLowSpaceNotif	.1.3.6.1.4.1.9.9.10.1.3.0.9	DP 1901
ciscoFlashPartitionLowSpaceRecoveryNotif	.1.3.6.1.4.1.9.9.10.1.3.0.10	DP 1901
ciscoFlashDeviceChangeExtTrap	.1.3.6.1.4.1.9.9.10.1.3.0.11	DP 1901
ciscoFlashDeviceInsertedExtNotif	.1.3.6.1.4.1.9.9.10.1.3.0.12	DP 1901
ciscoFlashDeviceRemovedExtNotif	.1.3.6.1.4.1.9.9.10.1.3.0.13	DP 1901

<b>Support for</b>	<b>OID</b>	<b>Added in</b>
starCBCBufSizeExceeded	.1.3.6.1.4.1.8164.2.1403	DP 1903
starServiceLossDetected	.1.3.6.1.4.1.8164.2.1404	DP 1903
<b>Support for</b>	<b>OID</b>	<b>Added in</b>
starMMEManagerBusy	.1.3.6.1.4.1.8164.2.1405	DP 1905
starMMEManagerNormal	.1.3.6.1.4.1.8164.2.1406	DP 1905

<b>Support for</b>	<b>OID</b>	<b>Added in</b>
starCFGSyncForUPlaneRedundancyAbort	.1.3.6.1.4.1.8164.2.1407	DP 1911
starMonSubProcessInitFailure	.1.3.6.1.4.1.8164.2.1408	DP 1911
starMonSubPcapWriteFailure	.1.3.6.1.4.1.8164.2.1409	DP 1911

starMonSubProcessConnectFailure	.1.3.6.1.4.1.8164.2.1410	DP 1911
starBulkStatisticsTaiTimeOut	.1.3.6.1.4.1.8164.2.1411	DP 1911
starUPlaneSelfOverload	.1.3.6.1.4.1.8164.2.1412	DP 1911
starUPlaneSelfOverloadClear	.1.3.6.1.4.1.8164.2.1413	DP 1911
starRCMServiceStart	.1.3.6.1.4.1.8164.2.1414	DP 2005
starRCMServiceStop	.1.3.6.1.4.1.8164.2.1415	DP 2005
starUPlaneTsServiceChainPathNotSelected	.1.3.6.1.4.1.8164.2.1416	DP 2005
starUPlaneTsServiceChainUp	.1.3.6.1.4.1.8164.2.1417	DP 2005
starUPlaneTsServiceChainDown	.1.3.6.1.4.1.8164.2.1418	DP 2005
starUPlaneTsMissConfiguration	.1.3.6.1.4.1.8164.2.1419	DP 2005
starRCMConfigPushCompleteReceived	.1.3.6.1.4.1.8164.2.1420	DP 2005
starRCMConfigPushComplete	.1.3.6.1.4.1.8164.2.1421	DP 2005
starX3MDConnDown	.1.3.6.1.4.1.8164.2.1422	DP 2007
starX3MDConnUp	.1.3.6.1.4.1.8164.2.1423	DP 2007
starRCMTCPDisconnect	.1.3.6.1.4.1.8164.2.1424	DP 2007
starRCMTCPConnect	.1.3.6.1.4.1.8164.2.1425	DP 2007
starRCMChassisState	.1.3.6.1.4.1.8164.2.1426	DP 2007
starRCMChassisReload	.1.3.6.1.4.1.8164.2.1427	DP 2007
starDiameterEndPointPriorityPeersUnAvailable	.1.3.6.1.4.1.8164.2.1428	DP 2101
starDiameterEndPointPriorityPeersAvailable	.1.3.6.1.4.1.8164.2.1429	DP 2101
starDiameterEndPointNonPriorityPeersUnAvailable	.1.3.6.1.4.1.8164.2.1430	DP 2101
starDiameterEndPointNonPriorityPeersAvailable	.1.3.6.1.4.1.8164.2.1431	DP 2101
starSxPeerUnsupportedVersion	.1.3.6.1.4.1.8164.2.1432	DP 2103
starSxPeerUnsupportedVersionClear	.1.3.6.1.4.1.8164.2.1433	DP 2103
starSRPPeerUnsupportedVersion	.1.3.6.1.4.1.8164.2.1434	DP 2103
starSRPPeerUnsupportedVersionClear	.1.3.6.1.4.1.8164.2.1435	DP 2103
sessionUnevenDistribution	.1.3.6.1.4.1.8164.2.1436	DP 2111
sessionUnevenDistributionClear	.1.3.6.1.4.1.8164.2.1437	DP 2111
starSgiReachabilityAPNDown	.1.3.6.1.4.1.8164.2.1438	DP 2111
starSgiReachabilityAPNUp	.1.3.6.1.4.1.8164.2.1439	DP 2111

## Cisco IOS and Cisco IOS - XE— Supported Traps

Support for:	OID	Added in
ciscoBfdSessDown	.1.3.6.1.4.1.9.10.137.0.2	DP 1905
ciscoBfdSessUp	.1.3.6.1.4.1.9.10.137.0.1	DP 1905
cbgpPeer2FsmStateChange	.1.3.6.1.4.1.9.9.187.0.7	DP 2005

## Cisco ASR 903 — Supported Traps

Support for:	OID	Added in
cseShutDownNotify	1.3.6.1.4.1.9.9.305.1.3.5.0.2	DP 1909
cseHaRestartNotify	1.3.6.1.4.1.9.9.305.1.3.5.0.1	DP 1909

## Cisco UCS — Supported Traps

Support for:	OID	Added in
fltStorageVirtualDriveInoperable (fault code -1007)	.1.3.6.1.4.1.9.9.719.0.1 (Set)	DP 1911
	.1.3.6.1.4.1.9.9.719.0.2 (Clear)	DP 1911
fltStorageVirtualDriveDegraded (fault code -1008)	.1.3.6.1.4.1.9.9.719.0.1 (Set)	DP 1911
	.1.3.6.1.4.1.9.9.719.0.2 (Clear)	DP 1911
fltStorageVirtualDriveReconstructionFailed (fault code -1009)	.1.3.6.1.4.1.9.9.719.0.1 (Set)	DP 1911
	.1.3.6.1.4.1.9.9.719.0.2 (Clear)	DP 1911
fltStorageVirtualDriveConsistencyCheckFailed (fault code -1010)	.1.3.6.1.4.1.9.9.719.0.1 (Set)	DP 1911
	.1.3.6.1.4.1.9.9.719.0.2 (Clear)	DP 1911

## Cisco ASR 9000 — Supported Traps

Support for:	OID	Added in
Enhanced PIM Neighbor trap*	.1.3.6.1.4.1.9.10.119.1.1.3.1.4	DP 2003

\* PIM neighbor trap (.1.3.6.1.4.1.9.10.119.1.1.3.1.4) requires the presence of routing entry for its neighbor. If the routing entry is not present, it will match the default route entry (0.0.0.0). When there is no default route available under Routing Entity, PIM Neighbor lost trap will be processed successfully, and it will be associated to the “ManagedElement” level.

## Supported Syslogs

### Cisco Catalyst 4500-X — Supported Syslogs

Syslog	Added in:
--------	-----------

• C4K_IOSMODPORTMAN-6-MODULEREMOVED	DP 1805
• C4K_IOSMODPORTMAN-6-MODULEINSERTED	

## Cisco ASR 9000— Supported Syslogs

Support for	Added in
<ul style="list-style-type: none"> <li>• %PLATFORM-SFP-2-HIGH_RX_POWER_ALARM: Set   Clear</li> <li>• %PLATFORM-SFP-2-LOW_RX_POWER_ALARM : Set   Clear</li> <li>• %PLATFORM-SFP-2-HIGH_TX_POWER_ALARM : Set   Clear</li> <li>• %PLATFORM-SFP-2-LOW_TX_POWER_ALARM : Set   Clear</li> <li>• %PLATFORM-XFP-2-HIGH_RX_POWER_ALARM : Set   Clear</li> <li>• %PLATFORM-XFP-2-LOW_RX_POWER_ALARM : Set   Clear</li> <li>• %PLATFORM-XFP-2-HIGH_TX_POWER_ALARM : Set   Clear</li> <li>• %PLATFORM-XFP-2-LOW_TX_POWER_ALARM : Set   Clear</li> <li>• %PLATFORM-CPAK-2-LANE_1_HIGH_RX_POWER_ALARM : Set   Clear</li> <li>• %PLATFORM-CPAK-2-LANE_1_LOW_RX_POWER_ALARM : Set   Clear</li> <li>• %PLATFORM-CPAK-2-LANE_1_HIGH_TX_POWER_ALARM : Set   Clear</li> <li>• %PLATFORM-CPAK-2-LANE_1_LOW_TX_POWER_ALARM : Set Clear</li> </ul>	DP 1807
<ul style="list-style-type: none"> <li>• %PLATFORM-VIC-6-OPTICS_OIROUT : OPTICS OIR: 0/0/CPU0 port 25 Sn: FNS22150VTT is removed</li> <li>• %PLATFORM-VIC-6-OPTICS_OIRIN : OPTICS OIR: 0/0/CPU0 port 25 Sn: FNS22150VTT is inserted</li> </ul>	DP 2009*
<ul style="list-style-type: none"> <li>• %PLATFORM-ENVMON-2-ENV_CONDITION : Outstanding environmental condition exists in the chassis</li> <li>• %PLATFORM-ENVMON-2-ENV_CONDITION : Outstanding environmental condition cleared in the chassis</li> <li>• %PLATFORM-ENVMON-2-CHASSIS_OVERTEMP : Chassis ambient temperature 20.4C at or above rising T3 threshold -50.0C</li> <li>• %PLATFORM-ENVMON-2-CHASSIS_OVERTEMP_CLEAR : Chassis ambient temperature is normal</li> </ul>	DP 2101
<p><b>Power module syslog:</b></p> <ul style="list-style-type: none"> <li>• %PLATFORM-ENVMON-2-SAT_PM_OIR : PM0/PM1 OIR alarm raised on satellite: 110</li> <li>• %PLATFORM-ENVMON-2-SAT_PM_OIR : PM0/PM1 OIR alarm cleared on satellite: 110</li> </ul> <p><b>Fantray module syslog:</b></p> <ul style="list-style-type: none"> <li>• %PLATFORM-ENVMON-2-SAT_FT_OIR : FT0/FT1 OIR alarm raised on satellite: 110</li> <li>• %PLATFORM-ENVMON-2-SAT_FT_OIR : FT0/FT1 OIR alarm cleared on satellite: 110</li> </ul>	DP 2109

\*Newly added SFP Syslogs under Lightspeed card will not associate to the interface level but to the managed element due to HW defect [CSCvv80204](#)



### Cisco Network Convergence System 540 Series Routers (NCS 540) — Supported Syslogs

Support for	Added in
<ul style="list-style-type: none"> <li>• %L2-OPTICS-2-TRANSCEIVER_REMOVED: Optics module FortyGigE0/0/1/0 type QSFP+ 40G SR4 removed</li> <li>• %L2-OPTICS-6-TRANSCEIVER_INSERTED: Optics module FortyGigE0/0/1/0 type QSFP+ 40G SR4 inserted</li> </ul>	DP 1809
<ul style="list-style-type: none"> <li>• %ROUTING-MLDP-5-BRANCH_ADD</li> <li>• %ROUTING-MLDP-5-BRANCH_DELETE</li> </ul>	DP 2003

### Cisco Network Convergence System 5500 Series Routers (NCS 5500) — Supported Syslogs

Support for	Added in
<ul style="list-style-type: none"> <li>• %ROUTING-MLDP-5-BRANCH_ADD</li> <li>• %ROUTING-MLDP-5-BRANCH_DELETE</li> </ul>	DP 2003

### Cisco ISR 39xx— Supported Syslogs

Support for	Added in
<ul style="list-style-type: none"> <li>• %ENVMON-1-CPU_WARNING_OVERTEMP: Warning: CPU temperature 112C exceeds threshold 95C. Please resolve system cooling immediately to prevent system damage.</li> <li>• %ENVMON-0-CPU_TEMP_OK: Normal: CPU temperature normal</li> <li>• %ENVMON-4-MULTI_FAN_LOW_RPM: Warning: Two fans are running at low RPM. Rotation speed is now high for all other fans. Fan tray replacement is recommended.</li> <li>• %ENVMON-0-FAN_OK: Normal: Fan 4 is functioning normally now</li> </ul>	DP 1903

### Cisco ISR 29xx— Supported Syslogs

Support for	Added in
-------------	----------

<ul style="list-style-type: none"> <li>• %ENVMON-1-CPU_WARNING_OVERTEMP: Warning: CPU temperature 112C exceeds threshold 95C. Please resolve system cooling immediately to prevent system damage.</li> <li>• %ENVMON-0-CPU_TEMP_OK: Normal: CPU temperature normal</li> <li>• %ENVMON-4-MULTI_FAN_LOW_RPM: Warning: Two fans are running at low RPM. Rotation speed is now high for all other fans. Fan tray replacement is recommended.</li> <li>• %ENVMON-0-FAN_OK: Normal: Fan 4 is functioning normally now</li> </ul>	DP 1903
--	---------

### Support for Change and Configuration Management in 5.0

Change and Configuration Management is enhanced through device packs and point patches to support the following:

#### Industrial Ethernet 2K Device

#### Industrial Ethernet Series Integrated Services Switches

Device Series	Software Version/Feature	Provided/Added in:
Industrial Ethernet Series Integrated Services Switches	15.2(4)	DP 1807

Features	Support	Level of Support/Limitations
<b>Backup</b>	Yes	<ul style="list-style-type: none"> <li>✓ Running Configuration</li> <li>✓ Startup Configuration</li> </ul>
<b>Restore</b>	Yes	<ul style="list-style-type: none"> <li>✓ Running Configuration – supports overwrite, merge mode.</li> <li>✓ Startup Configuration – supports overwrite mode.</li> <li>✓ Edit and restore / Edited Config Archive restore: Configuration deploy mode will be “Merge” by default for “Running Configuration” Configuration deploy mode will be “Overwrite” by default for “Startup Configuration”</li> </ul>
<b>Synchronize</b>	Yes	
<b>Change log</b>	Yes	
<b>Configuration Export</b>	Yes	
<b>Image Baseline</b>	Yes	
<b>Distribution</b>	Yes	
<b>Activation</b>	Yes	
<b>ISSU Support</b>	No	
<b>Supported Protocol:</b> FTP, SCP, TFTP		

## Industrial Ethernet 3K Device

### Industrial Ethernet 3010 Series Switches

Device Series	Software Version/Feature	Provided/Added in:
Cisco Industrial Ethernet 3010 Series Switches	15.2(4)EA5	DP 1807

Features	Support	Level of Support/Limitations
<b>Backup</b>	Yes	<ul style="list-style-type: none"> <li>✓ Running Configuration</li> <li>✓ Startup Configuration</li> </ul>
<b>Restore</b>	Yes	<ul style="list-style-type: none"> <li>✓ Running Configuration – supports overwrite, merge mode.</li> <li>✓ Startup Configuration – supports overwrite mode.</li> <li>✓ Edit and restore / Edited Config Archive restore: Configuration deploy mode will be “Merge” by default for “Running Configuration”</li> <li>✓ Configuration deploy mode will be “Overwrite” by default for “Startup Configuration”</li> </ul>
<b>Synchronize</b>	Yes	
<b>Change log</b>	Yes	
<b>Configuration Export</b>	Yes	
<b>Image Baseline</b>	Yes	
<b>Distribution</b>	Yes	
<b>Activation</b>	Yes	
<b>ISSU Support</b>	No	
<b>Supported Protocol:</b> FTP, SCP, TFTP		

## Industrial Ethernet 4K Device

### Industrial Ethernet Series Integrated Services Switches

Device Series	Software Version/Feature	Provided/Added in:
Industrial Ethernet Series Integrated Services Switches	15.2(4)	DP 1807

Features	Support	Level of Support/Limitations
<b>Backup</b>	Yes	<ul style="list-style-type: none"> <li>✓ Running Configuration</li> <li>✓ Startup Configuration</li> </ul>

Features	Support	Level of Support/Limitations
Restore	Yes	<ul style="list-style-type: none"> <li>✓ Running Configuration – supports overwrite, merge mode.</li> <li>✓ Startup Configuration – supports overwrite mode.</li> <li>✓ Edit and restore / Edited Config Archive restore: Configuration deploy mode will be “Merge” by default for “Running Configuration”</li> <li>✓ Configuration deploy mode will be “Overwrite” by default for “Startup Configuration”</li> </ul>
Synchronize	Yes	
Change log	Yes	
Configuration Export	Yes	
Image Baseline	Yes	
Distribution	Yes	
Activation	Yes	
ISSU Support	No	
<b>Supported Protocol:</b> FTP, SCP, TFTP		

#### Cisco Network Convergence System 540 Series Routers (NCS 540)

Device Series	Software Version/Feature	Provided/Added in:
NCS 540	Cisco IOS-XR 6.3.2/6.3.3	DP 1809

Features	Support	Level of Support/Limitations
Backup	Yes	<ul style="list-style-type: none"> <li>✓ Running-config</li> </ul>
Restore	Yes	<ul style="list-style-type: none"> <li>✓ Running-config – supports both overwrite and merge mode</li> <li>✓ Edit and restore / Edited Config Archive restore: Configuration deploy mode will be “Merge” by default.</li> </ul>
Change log	Yes	
Configuration Export	Yes	
Distribution	Yes	<ul style="list-style-type: none"> <li>✓ To perform image operations application changes are required.</li> <li>✓ Application changes will be part of Prime Network 5.3 release. For more details, refer the bug <a href="#">CSCvm13586</a></li> </ul>
Install add	Yes	
Activation	Yes	
Deactivate	Yes	
Remove	Yes	
Rollback	Yes	
Commit	Yes	
Image Baseline	Yes	

Features	Support	Level of Support/Limitations
Synchronize	No	
ISSU Support	No	
Supported Protocol: TFTP, SFTP		

### Cisco Network Convergence System 5500 Series Routers (NCS 5500)

Device Series	Software Version/Feature	Provided/Added in:
NCS 5500	Cisco IOS-XR 6.3.3	DP 1905

Features	Support	Level of Support/Limitations
Backup	Yes	✓ Running-config
Restore	Yes	✓ Running-config – supports both overwrite and merge mode ✓ Edit and restore / Edited Config Archive restore: Configuration deploy mode will be “Merge” by default.
Change log	Yes	
Configuration Export	Yes	
Distribution	No	✓ To perform image operations application changes are required. ✓ Application changes will be part of Prime Network 5.3 release. For more details, refer the bug <a href="#">CSCvp72492</a>
Install add	No	
Activation	No	
Deactivate	No	
Remove	No	
Rollback	No	
Commit	No	
Image Baseline	No	
Synchronize	No	
ISSU Support	No	
Supported Protocol: TFTP, SFTP		

### Cisco Catalyst 9300 Series Switches

<b>Device Series</b>	<b>Software Version/Feature</b>	<b>Provided/Added in:</b>
CAT 9300	Cisco IOS-XE 16.9.4	DP 2005

<b>Features</b>	<b>Support</b>	<b>Level of Support/Limitations</b>
<b>Backup</b>	Yes	<ul style="list-style-type: none"> <li>✓ Running-config</li> <li>✓ Startup-config</li> </ul>
<b>Restore</b>	Yes	<ul style="list-style-type: none"> <li>✓ Running-config – supports both overwrite and merge mode</li> <li>✓ Startup-config – supports overwrite mode</li> <li>✓ Edit and restore / Edited Config Archive restore: Configuration deploy mode will be “Merge” by default. Configuration deploy mode will be “Overwrite” by default for “startup-configuration”</li> </ul>
<b>Change log</b>	Yes	
<b>Configuration Export</b>	Yes	
<b>Distribution</b>	Yes	
<b>Install add</b>	NA	
<b>Activation</b>	Yes	
<b>Deactivate</b>	Yes	
<b>Remove</b>	NA	
<b>Rollback</b>	NA	
<b>Commit</b>	NA	
<b>Image Baseline</b>	Yes	
<b>Synchronize</b>	Yes	
<b>ISSU Support</b>	No	
<b>Supported Protocol:</b> TFTP, SCP, FTP		