



Cisco Network Assurance Engine App
Installation and Upgrade Guide,
Release 5.0(1)

Table of Contents

Cisco Network Assurance Engine Application	3
Overview	3
Management and Network Connectivity	3
Installation Requirements	5
System Requirements	5
Software Compatibility Information	5
Verified Scalability	5
Installing Cisco Network Assurance Engine App	7
Prerequisites	7
Guidelines and Limitations	7
Installing the Cisco NAE App	7
Viewing Cisco NAE App Information	9
Deleting Cisco NAE App	9
Upgrading Cisco Network Assurance Engine App	10
Upgrading the Cisco NAE App	10

First Published: 2020-07-24

Americas Headquarters

Cisco Systems, Inc.
170 West Tasman Drive
San Jose, CA 95134-1706
USA

<http://www.cisco.com>

Tel: 408 526-4000
800 553-NETS (6387)
Fax: 408 527-0883

THE SPECIFICATIONS AND INFORMATION REGARDING THE PRODUCTS IN THIS MANUAL ARE SUBJECT TO CHANGE WITHOUT NOTICE. ALL STATEMENTS, INFORMATION, AND RECOMMENDATIONS IN THIS MANUAL ARE BELIEVED TO BE ACCURATE BUT ARE PRESENTED WITHOUT WARRANTY OF ANY KIND, EXPRESS OR IMPLIED. USERS MUST TAKE FULL RESPONSIBILITY FOR THEIR APPLICATION OF ANY PRODUCTS.

THE SOFTWARE LICENSE AND LIMITED WARRANTY FOR THE ACCOMPANYING PRODUCT ARE SET FORTH IN THE INFORMATION PACKET THAT SHIPPED WITH THE PRODUCT AND ARE INCORPORATED HEREIN BY THIS REFERENCE. IF YOU ARE UNABLE TO LOCATE THE SOFTWARE LICENSE OR LIMITED WARRANTY, CONTACT YOUR CISCO REPRESENTATIVE FOR A COPY.

The Cisco implementation of TCP header compression is an adaptation of a program developed by the University of California, Berkeley (UCB) as part of UCB's public domain version of the UNIX operating system. All rights reserved. Copyright © 1981, Regents of the University of California.

NOTWITHSTANDING ANY OTHER WARRANTY HEREIN, ALL DOCUMENT FILES AND SOFTWARE OF THESE SUPPLIERS ARE PROVIDED "AS IS" WITH ALL FAULTS. CISCO AND THE ABOVE-NAMED SUPPLIERS DISCLAIM ALL WARRANTIES, EXPRESSED OR IMPLIED, INCLUDING, WITHOUT LIMITATION, THOSE OF MERCHANTABILITY, FITNESS FOR A PARTICULAR PURPOSE AND NONINFRINGEMENT OR ARISING FROM A COURSE OF DEALING, USAGE, OR TRADE PRACTICE.

IN NO EVENT SHALL CISCO OR ITS SUPPLIERS BE LIABLE FOR ANY INDIRECT, SPECIAL, CONSEQUENTIAL, OR INCIDENTAL DAMAGES, INCLUDING, WITHOUT LIMITATION, LOST PROFITS OR LOSS OR DAMAGE TO DATA ARISING OUT OF THE USE OR INABILITY TO USE THIS MANUAL, EVEN IF CISCO OR ITS SUPPLIERS HAVE BEEN ADVISED OF THE POSSIBILITY OF SUCH DAMAGES.

Any Internet Protocol (IP) addresses and phone numbers used in this document are not intended to be actual addresses and phone numbers. Any examples, command display output, network topology diagrams, and other figures included in the document are shown for illustrative purposes only. Any use of actual IP addresses or phone numbers in illustrative content is unintentional and coincidental.

Cisco and the Cisco logo are trademarks or registered trademarks of Cisco and/or its affiliates in the U.S. and other countries. To view a list of Cisco trademarks, go to this URL: <http://www.cisco.com/go/trademarks>. Third-party trademarks mentioned are the property of their respective owners. The use of the word partner does not imply a partnership relationship between Cisco and any other company. (1110R)

© 2017-2020 Cisco Systems, Inc. All rights reserved.

Cisco Network Assurance Engine Application

Overview

The Cisco Network Assurance Engine app provides continuous verification and analysis of the entire data center network, giving operators confidence that their network is operating consistent with intent. It combines mathematically accurate network models with codified Cisco domain knowledge to generate smart events that pinpoint deviations from intent and offer remediation recommendations.

Management and Network Connectivity

Cisco NAE app can be deployed on the Cisco Application Services Engine cluster with each NAE services scheduled to run on any Cisco Application Services Engine node. The Out-of-band management interface on the Cisco Application Services Engine will be used as management interface on Cisco Application Services Engine. The In-band management interface will be used by the application to access the management network of the Cisco ACI and Cisco NX-OS fabrics. If in-band management interface is not configured, then out-of-band management interface will not be used. Cisco NAE GUI is also reachable through the Cisco Application Services Engine Dashboard.

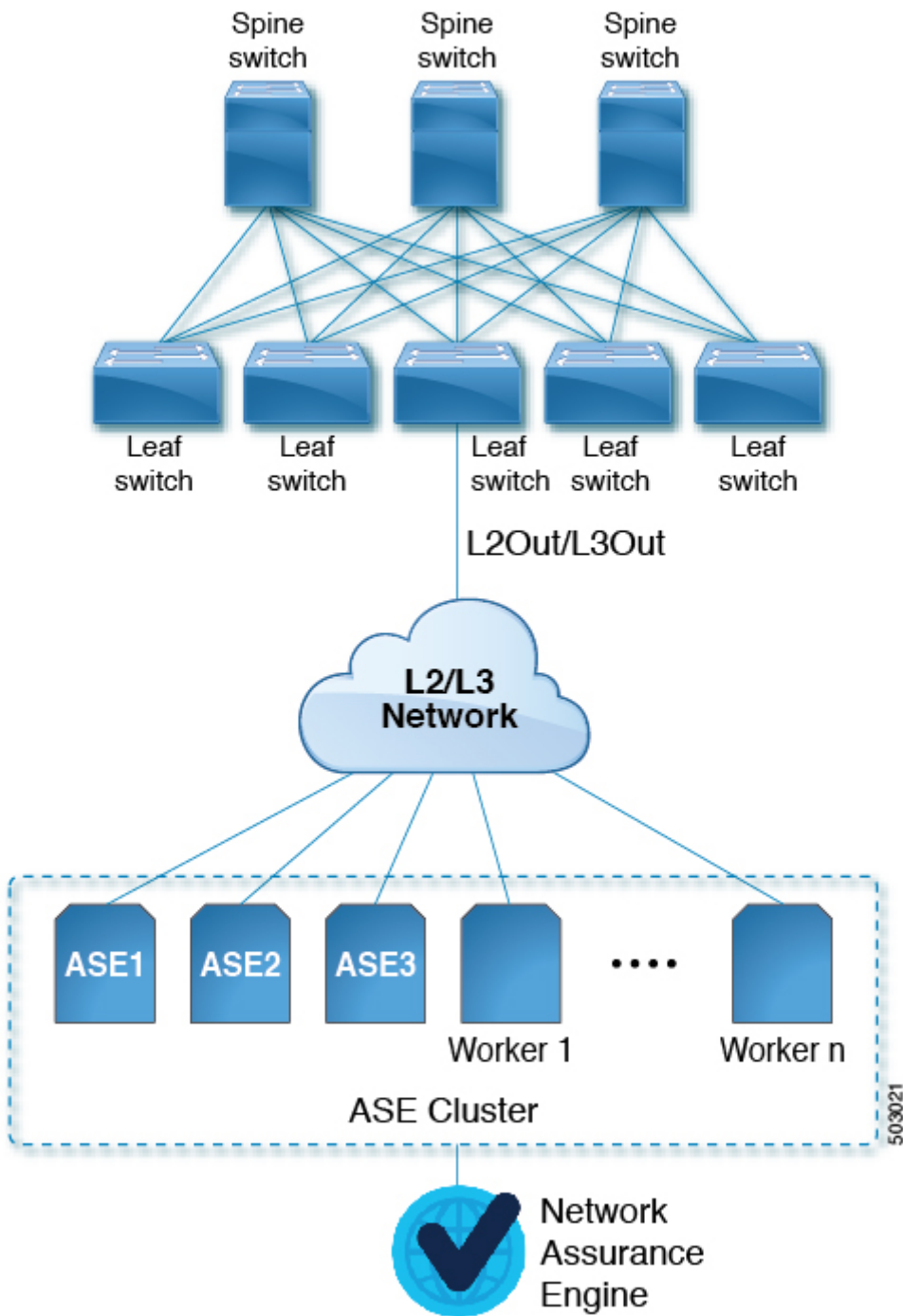


Figure 1. Cisco NAE App

See the [Cisco Application Services Engine Getting Started Guide](#) for information regarding Cisco Application Services Engine.

Installation Requirements

System Requirements

The following tables identify the system requirements for installing the Cisco NAE app on Cisco Application Services Engine.

Table 1. System Requirements

Requirement	Description
Cisco Application Services Engine	Physical form factor (ISO form factor)
Cisco Application Services Engine services nodes	A minimum of 3 node cluster

See the [Cisco Application Services Engine Getting Started Guide](#) for information regarding Cisco Application Services Engine.

See the [Cisco Network Assurance Engine Documentation](#) for information regarding Cisco NAE documentation.

Software Compatibility Information

Table 2. Compatibility Information

Product Name	Release
Cisco Application Services Engine	1.1.3d and later
Cisco DCNM	<ul style="list-style-type: none">• 11.4(1)• 11.3(1)
Cisco APIC	<ul style="list-style-type: none">• 5.0(2)• 5.0(1)• 4.2(4)• 4.2(3)• 3.2(9)

See the [Compatibility Matrix](#) for more information.

Verified Scalability

The following table lists the maximum verified scalability limits for the Cisco NAE app.

Table 3. Verified Scalability Limits

Feature	Scale Limit
APIC Fabric Size	50 leaf switches for a 3 node cluster

Feature	Scale Limit
DCNM Fabric Size	50 leaf switches for a 3 node cluster

Installing Cisco Network Assurance Engine App

Prerequisites

- You have installed Cisco Application Services Engine Release 1.1.3.
- Cisco Application Services Engine cluster is successfully deployed.
- You have configured the in-band management interface in Cisco Application Services Engine.
- You have downloaded the Cisco NAE app from the [Cisco DC App Center](#).
- You have the credentials for the SMTP server.
- Ensure that ports 443 and 22 are open for HTTPS and SSH communication between the Cisco NAE app and Cisco APIC.
- LDAP and TACACS+ server should be accessible from the in-band interface of the Cisco Application Services Engine.
- NVMe (Non-Volatile Memory Express) of 1.6T per Cisco Application Services Engine node is required for the Cisco NAE app.

Guidelines and Limitations

Cisco NAE app is only supported on Cisco Application Services Engine cluster SE-CL-L3.

Installing the Cisco NAE App

Use this procedure to install the Cisco NAE app on Cisco Application Services Engine.

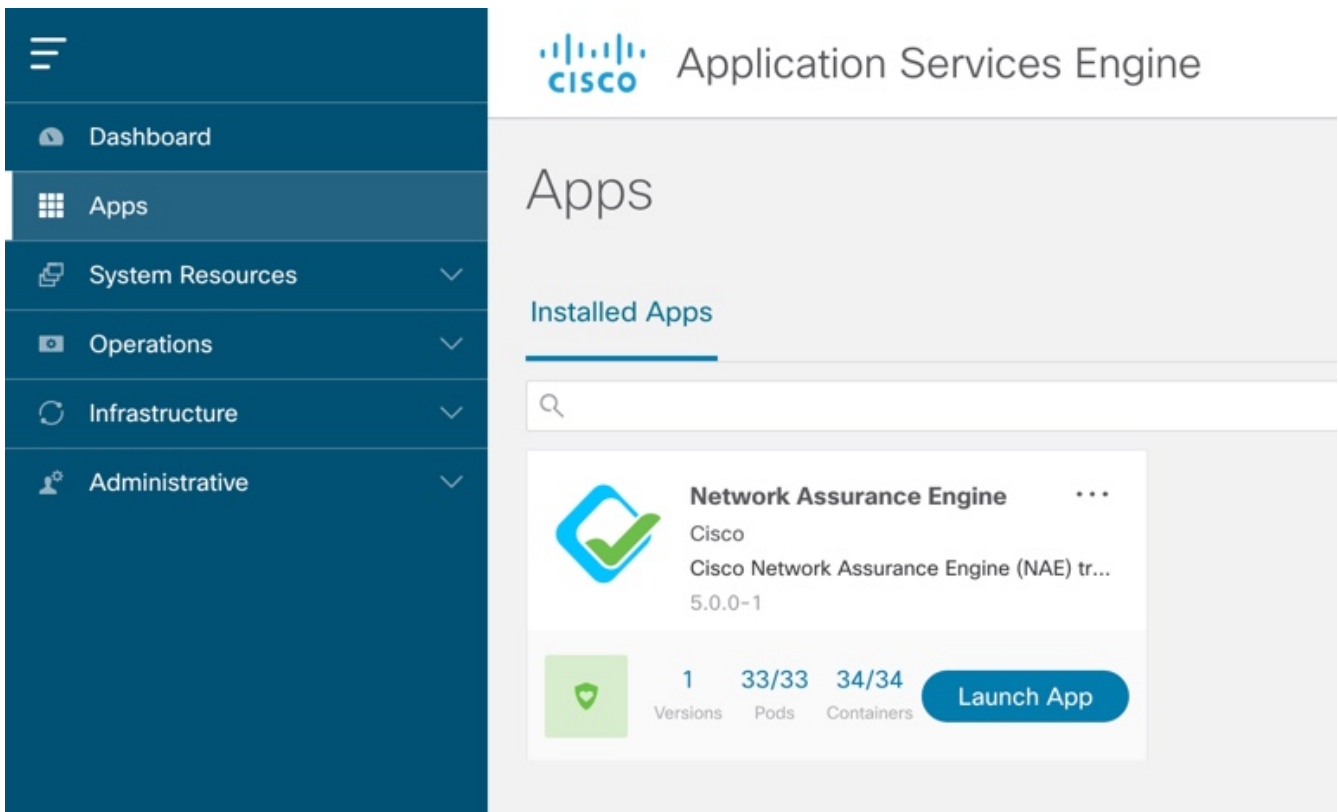
Before You Begin

- You must have administrator credentials to install the Cisco NAE app.
- You have installed and configured the Cisco Application Services Engine.
- You have downloaded the Cisco NAE app from the [Cisco DC App Center](#).

Procedure

1. Download the Cisco NAE app from the [Cisco DC App Center](#).
2. Host the downloaded app to a http server and copy the URL.
3. Log in to Cisco Application Services Engine as an admin.
4. In the **Navigation** pane, choose **Apps** .
5. Click **Actions > Upload App**.
6. Choose **Remote**.
7. In the **URL** field, enter the http address of the Cisco NAE app and click Submit.

- Once the application installation is completed, click **Enable**. In the Cisco NAE installed on Cisco Application Services Engine, make sure that the health icon is green and all the pods and containers are running.



- Click **Launch App** to launch the Cisco NAE app.
- The Cisco NAE app GUI appears. Complete the following fields for **Administrator Profile**.
 - Enter the email address.
 - Enter the password and enter the password again to confirm.
- Complete the following fields for SMTP server.

Cisco NAE app leverages email as the mechanism for password recovery. SMTP Server configuration is required for password recovery.




We strongly recommended that you configure the SMTP server information, since it is required by the admin for password recovery.

- Enter the host name of the SMTP server.
 - Enter the port number. Examples include common default ports, SMTP port number 25, or secure SMTP (SSL) port number 465.
 - (Optional) Check the **SSL** check box to configure SSL for SMTP.
 - Enter the username and password to access the SMTP server.
- Click **Submit**.

Viewing Cisco NAE App Information

Use this procedure to view Cisco NAE app information in Cisco Application Services Engine.



Procedure

1. Log in to Cisco Application Services Engine as an admin.
2. In the **Navigation** pane, choose **Apps** to view the apps hosted on Cisco Application Services Engine.
3. Click the app to display the app summary pane. The summary pane displays the app summary information such as name, description, app version, and system resources.
4. Click  to view the app details pane.
 - a. The **Overview** tab displays the app information such as name, description, app version, operational status, and app resources.
 - b. The **System Resources** tab displays the configured pods and containers running on the selected app.
 - i. Click **Pods** to view the pod details such as status, name, IP address, containers, age, CPU usage, and memory.
 - ii. Click **Containers** to view the container details such as status, name, namespace, pod name, restart count, and age.

Deleting Cisco NAE App

Use this procedure to delete a Cisco NAE app.

Procedure

1. Log in to Cisco Application Services Engine as an admin.
2. In the **Navigation** pane, choose **Apps** to view the apps hosted on Cisco Application Services Engine.
3. Select the Cisco NAE app.
4. Click  and then click **Disable** to disable the app.
5. Click  and then click **Delete** to delete the app.

Upgrading Cisco Network Assurance Engine App


Upgrading the Cisco NAE App

Use this procedure to upgrade the Cisco NAE app on Cisco Application Services Engine.

Before You Begin

- You must have administrator credentials to upgrade the Cisco NAE app.
- You have downloaded the Cisco NAE app.

Procedure

1. Download the Cisco NAE app.
2. Host the downloaded app to a http server and copy the URL.
3. Log in to Cisco Application Services Engine as an admin.
4. In the **Navigation** pane, choose **Apps** .
5. Click **Actions > Upload App**.
6. In the **URL** field, enter the http address of the Cisco NAE app and click Submit.
7.  Click **...** and choose **Available Versions**.
8. Select the app version and click **Activate** to upgrade the Cisco NAE app. After the upgrade is completed, make sure that the health icon is green and all the pods and containers are running.
9. Click **Launch App** to launch latest version of the Cisco NAE app.



Downgrade of Cisco NAE app is not supported.